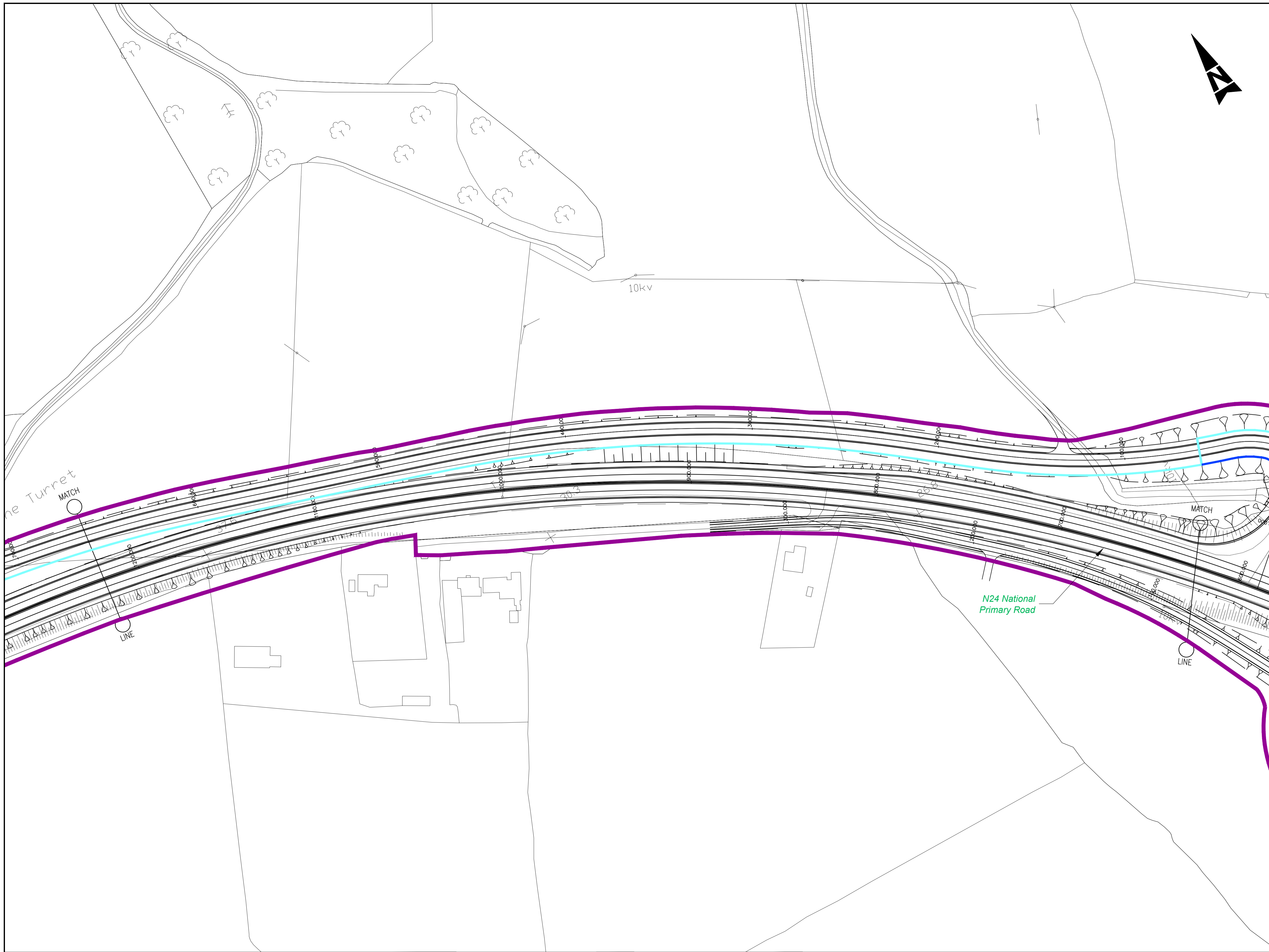


A1

DO NOT SCALE

File: 5165044-HTR-DR-8004 to 8006.dwg
Date: Feb 01, 2019 - 2:34pm
Plotted by: rosullivan



- GENERAL NOTES**
1. ALL DIMENSIONS ARE IN MILLIMETRES UNLESS NOTED OTHERWISE
 2. ONLY WRITTEN DIMENSIONS SHALL BE USED. NO DIMENSIONS SHALL BE SCALED FROM THE DRAWINGS
 3. ALL LEVELS ARE IN METRES AND ARE TO MALIN HEAD DATUM
 4. ALL COORDINATES ARE IN METRES AND ARE TO IRISH TRANSVERSE MERCATOR
 5. DRAWINGS ARE TO BE READ IN CONJUNCTION WITH THE SPECIFICATION

- LEGEND:**
- AREA ALLOWED FOR FUTURE PROVISION OF CYCLETRACK
 - PROPOSED 1 WAY CYCLETRACK
 - PROPOSED 2 WAY CYCLETRACK
 - FOOTPATH
 - PART 8 BOUNDARY

© ORDNANCE SURVEY IRELAND LICENSE NR. AR 0082519. ORDNANCE SURVEY IRELAND & GOVERNMENT OF IRELAND

ATKINS NOT TO BE HELD LIABLE FOR THE USE OF THIS DATA ON ANY PROJECT OTHER THAN THE N24 TOWER ROAD JUNCTION IMPROVEMENT SCHEME.

PART 8 PLANNING

Kilkenny County Council,
County Hall, John Street,
Kilkenny R95 A39T

Rev	Description	By	Date	Chk'd	Auth
D	ISSUED FOR PART 8 PLANNING	RO'S	02/19	JR	RAN
C	ISSUED FOR PART 8 PLANNING	RO'S	01/19	JR	RAN
B	ISSUED FOR PART 8 PLANNING	RO'S	01/19	JR	RAN
A	ISSUED FOR PART 8 PLANNING	RO'S	01/19	JR	RAN
-	ISSUED FOR PART 8 PLANNING	RO'S	01/19	JR	RAN

ATKINS
Member of the SNC-Lavalin Group

Atkins House, 150-155 Airside Business Park, Swords, Co. Dublin
Tel (+353) 01 810 8000 Fax (+353) 01 810 8001

Unit 2B, 2200 Cork Airport Business Park, Cork
Tel (+353) 021 429 0300 Fax (+353) 021 429 0360

2nd Floor Technology House Parkmore Technology Park, Galway
Tel (+353) 091 786 050 Fax (+353) 091 779 830

Client: **KILKENNY COUNTY COUNCIL**

Project: **N24 TOWER ROAD JUNCTION IMPROVEMENT SCHEME**

Purpose: **PART 8 PLANNING**

Title: **SITE LAYOUT PLAN SHEET 2 OF 3**

Original Scale	Des/Drawn	RO'S	Checked	JR	Authorised	RAN
1:1000	Date	18/12/18	Date	21/12/18	Date	21/12/18
Status	Drawing Number	5165044 / HTR / DR / 8005		Rev	D	
P						