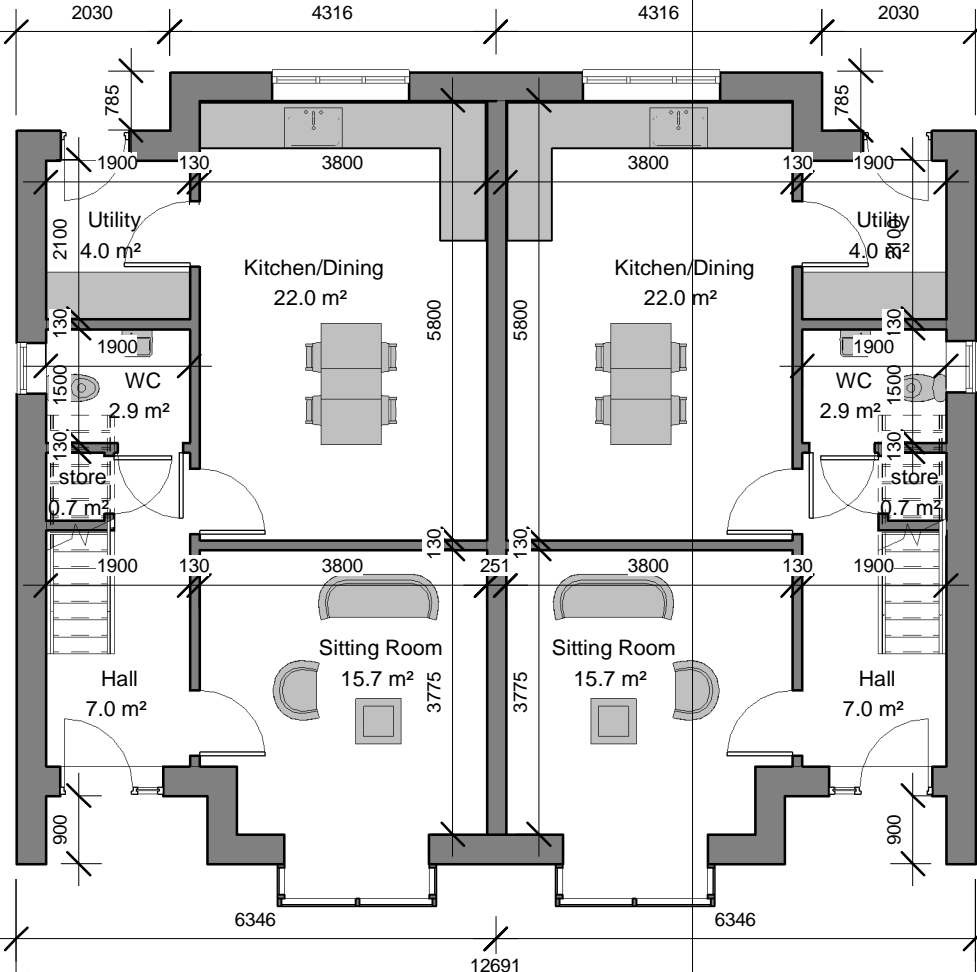


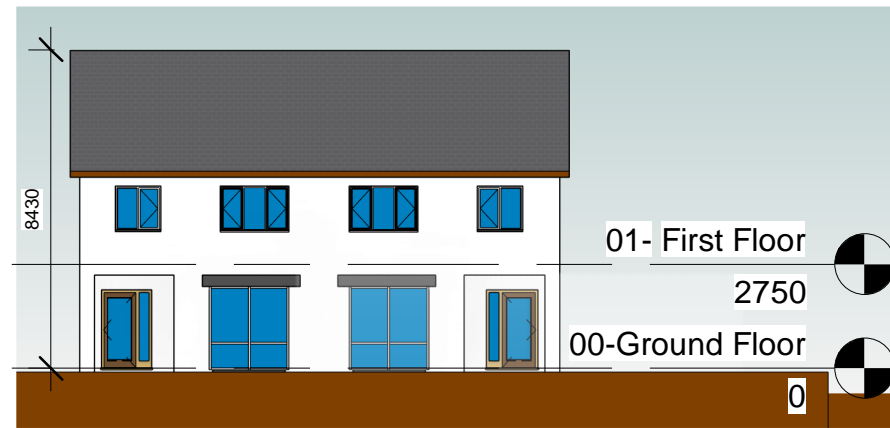
01- First Floor

2 1 : 100



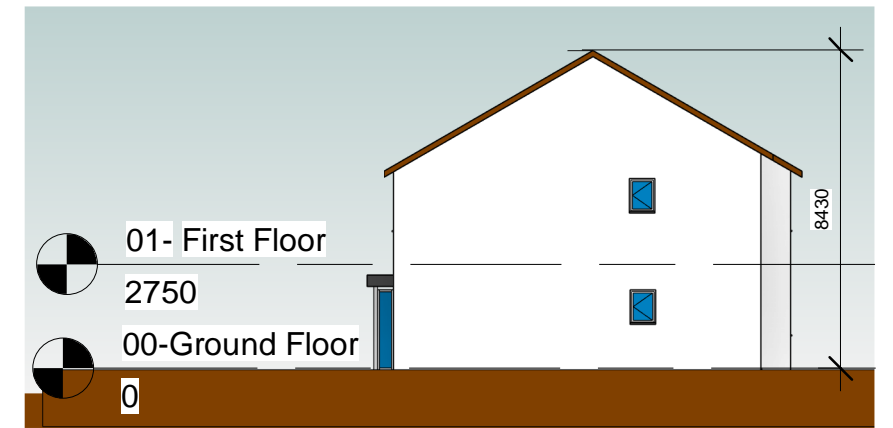
00-Ground Floor

1 1 : 100



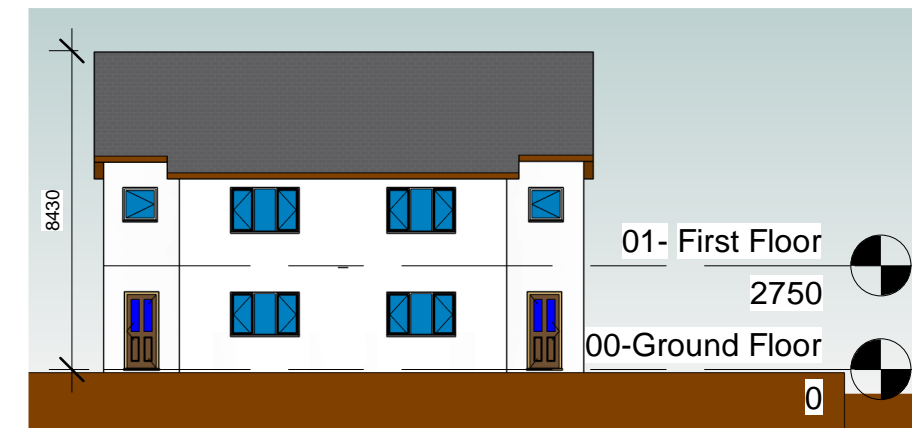
Front Elevation

3 1 : 200



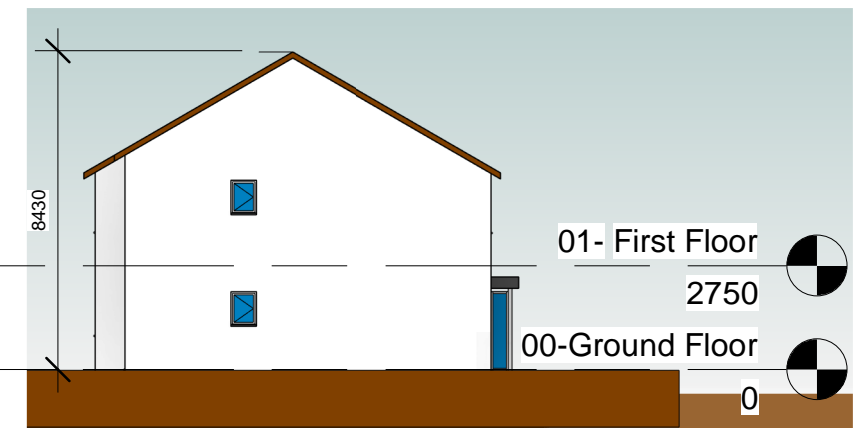
Side Elevation 1

4 1 : 200



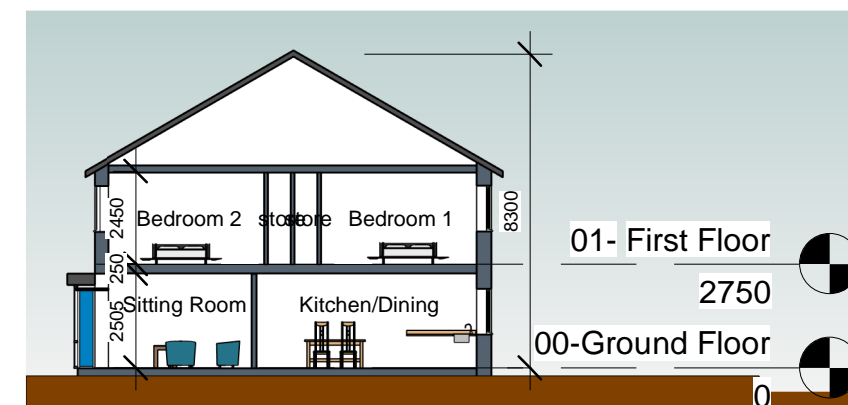
Rear Elevation

5 1 : 200



Side Elevation 2

6 1 : 200



Section

7 1 : 200

FLOOR AREA SCHEDULE

Table in accordance with figures taken from Quality Housing for Sustainable Communities, Table 5.1 - published by DoEHLG

House Type A: [dwelling type: 3BED/5P House (2 storey)]		
Area required	Area provided	Minimum area requirement
Aggregate Living	37.0m ²	34.0m ²
Bedroom 1	15.6m ²	13.0m ²
Bedroom 2	13.5m ²	11.1m ²
Bedroom 3	7.2m ²	7.1m ²
Total Storage provided	5.2m ²	5.0m ²
Gross Floor Area	108.0m ²	92.0m ²

Widths		
	Width Provided	Minimum width requirement
Living Room	3.8m	3.8m
Bedroom 1	3.8m	2.8m
Bedroom 2	3.0m	2.8m
Bedroom 3	2.7m	2.1m

EXTERNAL FINISHES

ROOF: Selected black flat concrete roof tiles with matching ridge tiles
 Aluminium lined fascias and soffits with rainwater goods to match
 Nap plaster finish to external masonry walls
 Triple glazed External Windows
 Composite front doors with triple glazed screens,
 Rear Doors with glazed panels

DESCRIPTION	DATE
HOUSING TECHNICAL SECTION	
<p>Kilkenny County Council County Hall John Street Kilkenny Tel: 056 7794000 Fax: 056 7794004 E-mail: info@kilkennycoco.ie Webpage: www.kilkennycoco.ie Serving People - Preserving Heritage © COPYRIGHT RESERVED</p>	
STAGE: X	PLANNING TENDER CONSTRUCTION
PROJECT:	Housing Development at Canal Road, Johnstown
DRAWINGS:	House Type A - General Arrangement
DRAWN BY: PT	SCALE: As indicated
CHECKED BY: EG	DATE: 16/06/2021 17:59:08
FILE No. HS 132	DRAWING No. P08
<small>ALL ORDNANCE SURVEY DATA BASED ON ORDNANCE SURVEY OF IRELAND MAP LICENCE NUMBER 2013/27/CCMA/KILKENNY</small>	