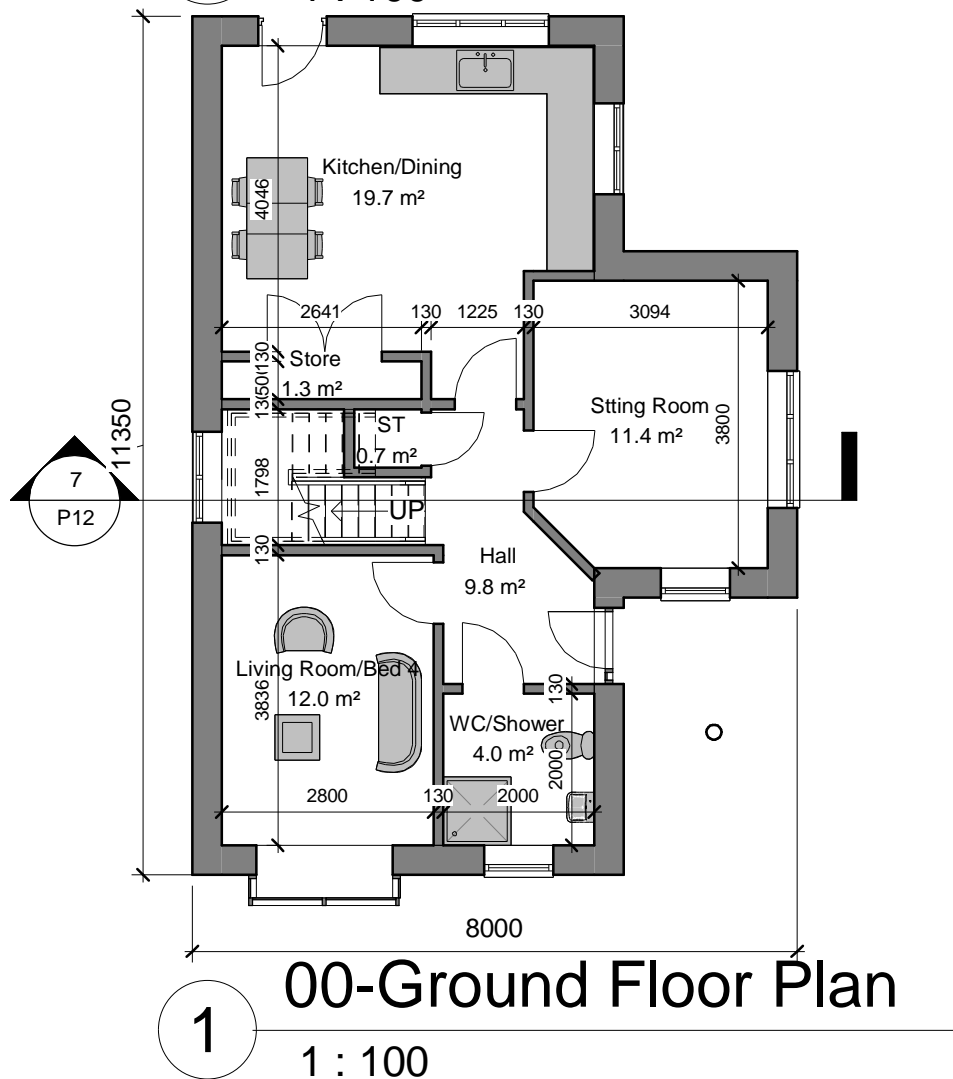


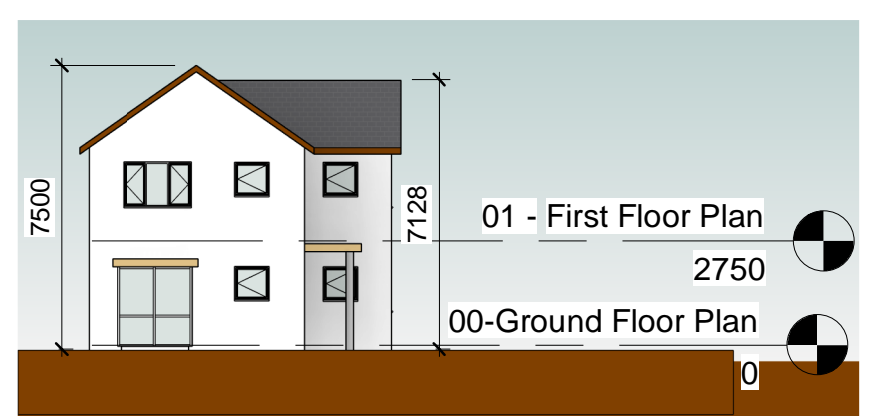
01 - First Floor Plan

2
1 : 100



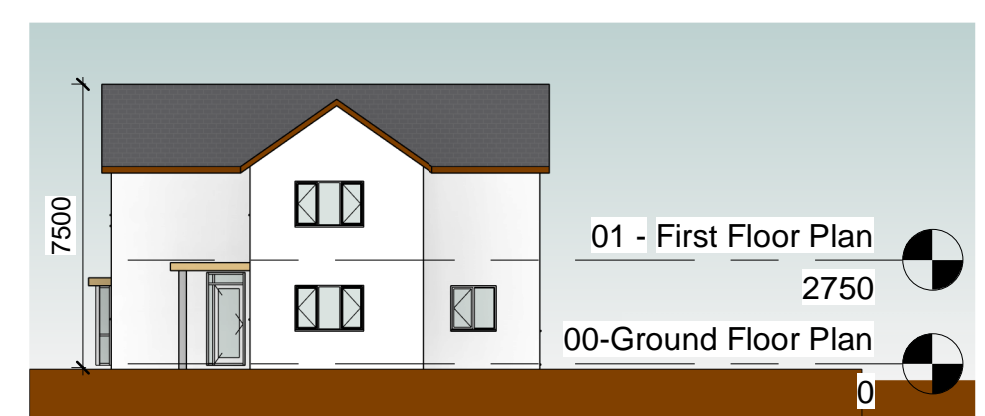
00-Ground Floor Plan

1
1 : 100



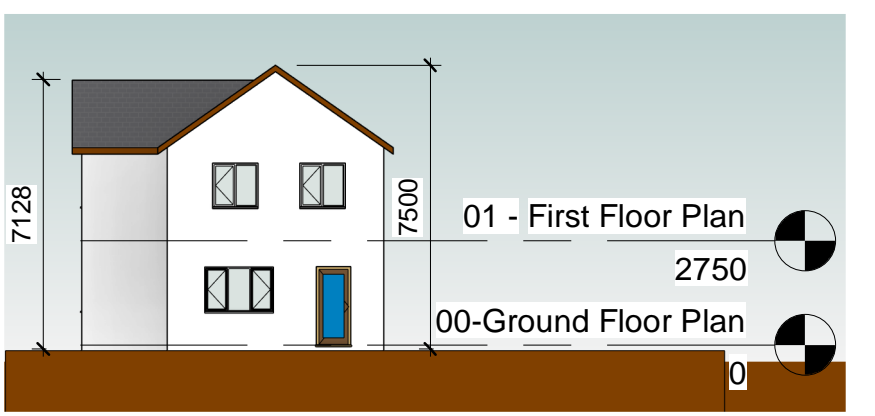
Front Elevation

5
1 : 200



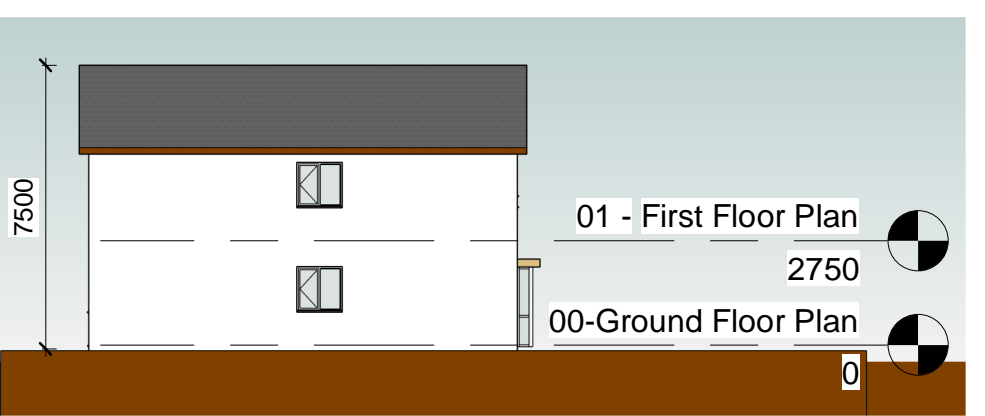
Side Elevation 1

3
1 : 200



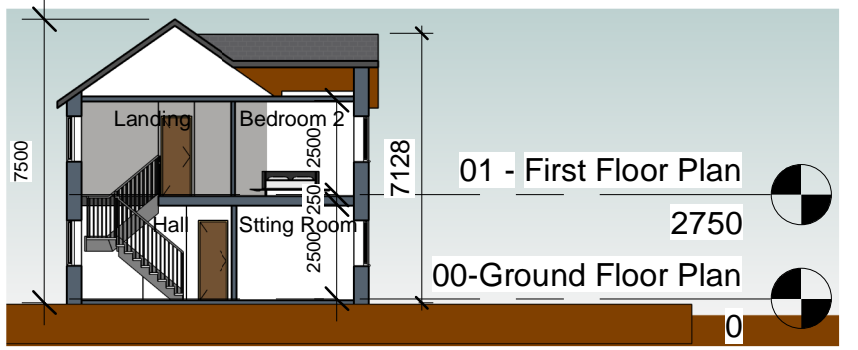
Rear Elevation

4
1 : 200



Side Elevation 2

6
1 : 200




Section 1

7
1 : 200

FLOOR AREA SCHEDULE		
Table in accordance with figures taken from Quality Housing for Sustainable Communities, Table 5.1 - published by DoEHLG		
House Type C: [dwelling type: 4BED/7P House (2 storey)]		
Area required	Area provided	Minimum area requirement
Aggregate Living	43.4m ²	40.0m ²
Bedroom 1	16.6m ²	13.0m ²
Bedroom 2	12.7m ²	11.1m ²
Bedroom 3	10.2m ²	7.1m ²
Bedroom 4	12.0m ²	7.1m ²
Total Storage provided	6.9m ²	6.0m ²
Gross Floor Area	121.4m ²	110.0m ²
Widths	Width Provided	Minimum width requirement
Living Room	43.8m	3.8m
Bedroom 1	3.5m	2.8m
Bedroom 2	3.4m	2.8m
Bedroom 3	2.9m	2.1m
Bedroom 4	2.8m	2.1m

EXTERNAL FINISHES	
ROOF:	Selected black flat concrete roof tiles with matching ridge tiles
	Aluminium lined fascias and soffits with rainwater goods to match
	Nap plaster finish to external masonry walls
	Triple glazed External Windows
	Composite front doors with triple glazed screens,
	Rear Doors with glazed panels

DESCRIPTION	DATE
HOUSING TECHNICAL SECTION	
 <p>Kilkenny County Council County Hall John Street Kilkenny Tel: 056 7794000 Fax: 056 7794004 E-mail: info@kilkennycoco.ie Webpage: www.kilkennycoco.ie Serving People - Preserving Heritage © COPYRIGHT RESERVED</p>	
STAGE: <input checked="checked" type="checkbox"/> PLANNING	<input type="checkbox"/> TENDER <input type="checkbox"/> CONSTRUCTION
PROJECT:	Housing Development at Canal Road, Johnstown
DRAWINGS:	House Type C - General Arrangement
DRAWN BY: PT	SCALE: As indicated
CHECKED BY: EG	DATE: 16/06/2021 18:16:31
FILE No. HS 132	DRAWING No. P12
<small>ALL ORDINANCE SURVEY DATA BASED ON ORDINANCE SURVEY OF IRELAND MAP LICENCE NUMBER 2013/27CCMAKILKENNY</small>	