

Section 4: Fire Stations

Kilkenny County operates seven (7no) Fire Stations in the following locations -

- Kilkenny City (Fire Service Headquarters),
- Castlecomer,
- Freshford,
- Urlingford,
- Thomastown,
- Callan,
- Graiguenamanagh.

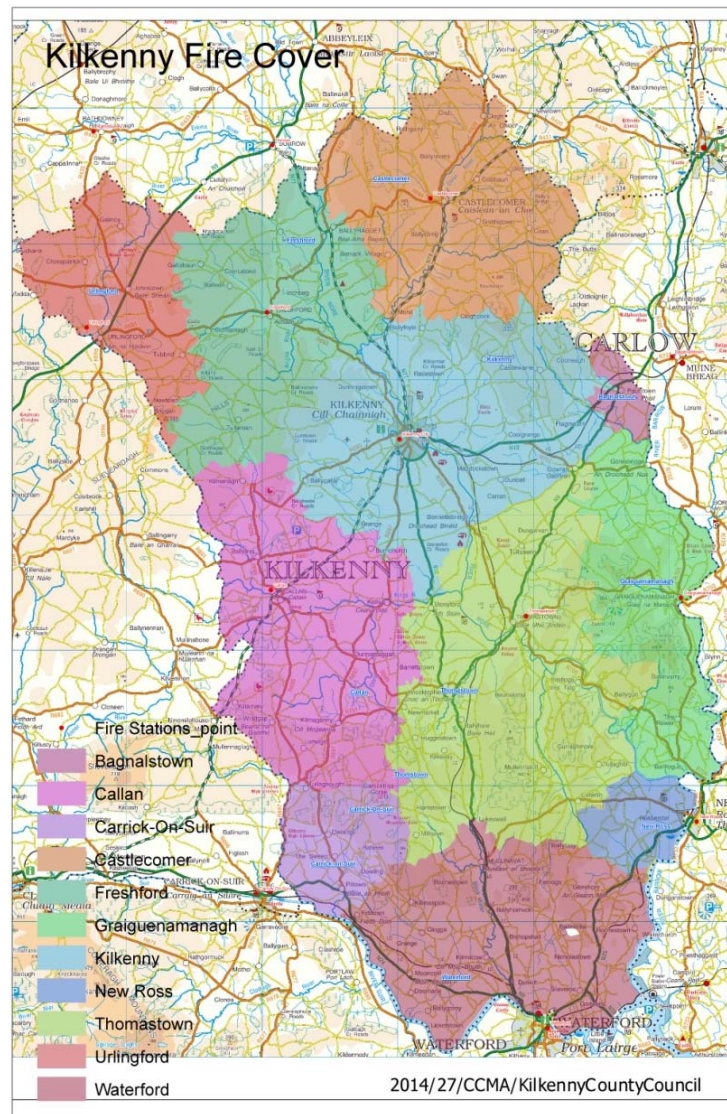


Figure 4:1: Location of Kilkenny Fire and Rescue Service Fire Stations

All major construction projects, including major refurbishment projects at Fire Stations require capital funding from the NDFEM. Ongoing day-to-day maintenance of Fire Stations is funded from the Fire Authorities own revenue budget. Kilkenny Fire and Rescue Service will support policies in Kilkenny County Council Climate Adaptation Strategy 2019-2024 and any other future Climate Adaptation strategies in relation to fire service premises.

A brief description of all Fire Stations is outlined below.

4.1 Kilkenny City (Fire Service Headquarters) (Call Sign KKI 1)



Figure 4:2: Kilkenny City Fire Station

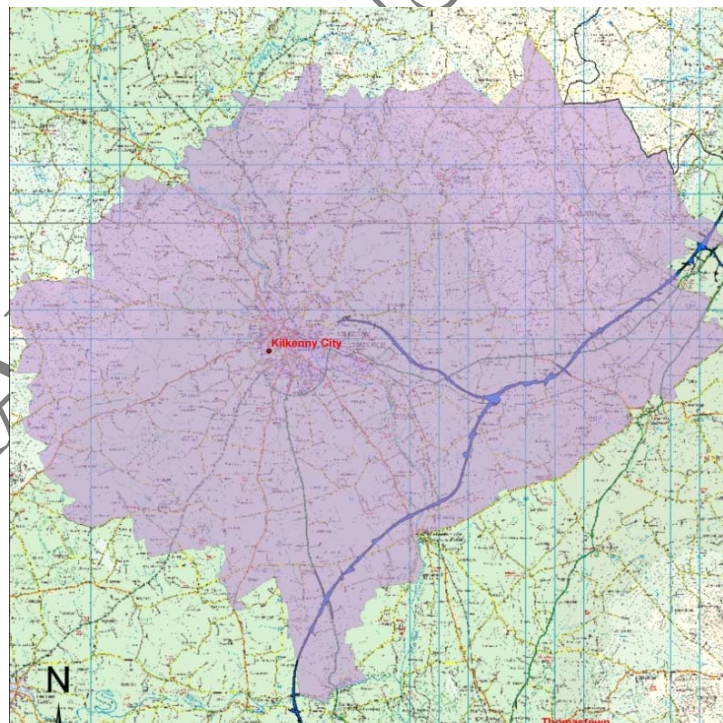


Figure 4:3: Kilkenny City Fire Station Fireground Area

Station Address:	Gaol Road, Kilkenny City R95 R660
Fireground Population:	33,158 (per NDFEM Risk Based Approach Report May 2012) 35,962 - census population 2016
Fireground Area:	308 Km ²
Total number of call-outs/annum:	2009: 420 2014: 247 2019: 271 2010: 391 2015: 269 2020: 272 2011: 317 2016: 262 2021: 270 2012: 269 2017: 255 2013: 252 2018: 259

4.1.1 Kilkenny City Fire Station, Fire Service Headquarters, Gaol Road, Kilkenny was completed in 1977. The existing premise consists of the original Station Officers house converted to offices with extensions built on over a number of decades.

An extension to the office accommodation, lecture facilities, and stores was completed by the end of 1997.

The retained station accommodation and facilities consists of -

- A 6-bay appliance room housing 2 No. standard Class B appliances, 1 No. Emergency Tender appliance, 1 No. Aerial Appliance, 1 No. Water Tanker and Maintenance bay area.
- Muster Bay
- Locker Room
- Watch Room
- Lecture Room
- Kitchenette
- Breathing Apparatus Servicing Room
- Breathing Apparatus Compressor Room
- Drying Room
- Toilet and Shower facilities
- Drill Yard
- Drill Tower
- Storerooms
- Separate store for mechanic
- Boiler Room
- Offices

4.1.2 Administration Section

The administration section of the building accommodates the Chief Fire Officer as well as the full time Operational, Fire Prevention and Administrative staff and consists of -

- 1 No. Open Plan Office/Reception Area
- 5 No. Offices
- Female Toilet and Shower facilities
- Male Toilet and Shower facilities
- 2 No. Store Rooms
- Kitchenette

The Minister for Housing, Local Government and Heritage announced on the 29th December 2020 funding for a new fire station for Kilkenny City in the Fire Services Capital Programme 2021-2025. It is planned to construct a New Fire Station HQ with a new purpose built maintenance facility in order to comply with safe working practices for the full-time brigade mechanic.

It is anticipated that these works could cost in the region of €6,000,000. In the interim, ongoing maintenance works will be carried out from Kilkenny Fire and Rescue Service's own financial resources.

DRAFT - CONSULTATION

4.2 Castlecomer (Call Sign KK12)



Figure 4:4: Castlecomer Fire Station

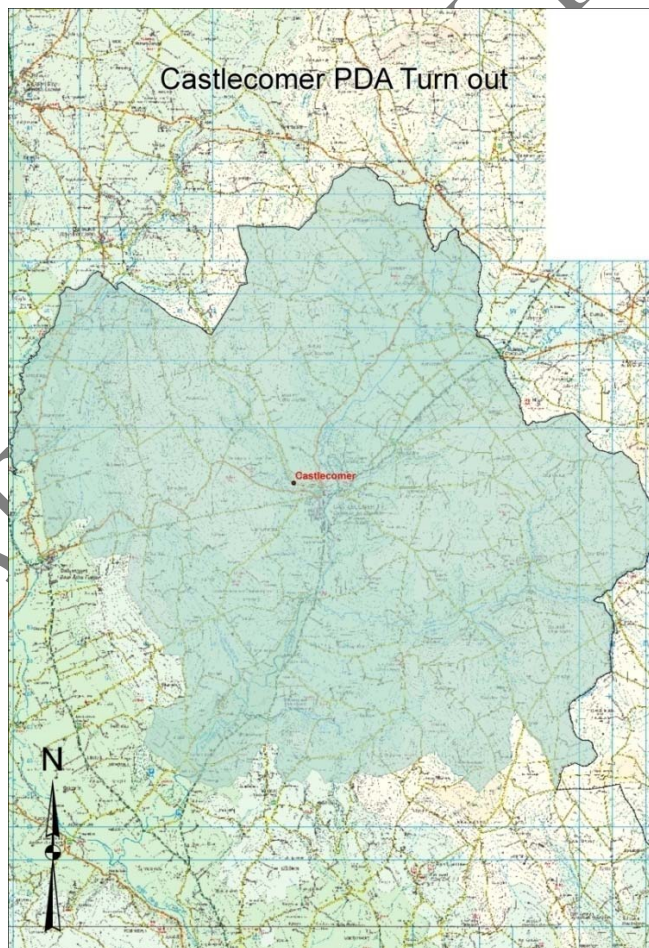


Figure 4:5: Castlecomer Fire Station Fireground Area

Station Address:	Kilkenny Road, Castlecomer, Co. Kilkenny. R95 XN96
Fireground Population:	8,517 (per NDFEM Risk Based Approach Report May 2012) 7,937- census population 2016
Fireground Area:	260 Km ²
Total number of call-outs/annum:	2009: 109 2014: 70 2019: 57 2010: 79 2015: 66 2020: 51 2011: 64 2016: 56 2021: 57 2012: 60 2017: 65 2013: 71 2018: 79

4.2.1 A new Fire Station was completed at Castlecomer in 2010. The Retained Station accommodation and facilities consists of -

- A 2-bay appliance room housing 2 No. standard Class B appliances and 1 No. 4-Wheel Drive Appliance
- Parking Spaces
- Muster Bay
- Watch Room
- Kitchenette/Meeting Room
- Station Officer's Office
- Breathing Apparatus Servicing Area
- Drying Room
- Female Toilet and Shower facilities
- Male Toilet and Shower facilities
- Drill Yard
- Drill Tower

The only significant development works planned for Castlecomer Fire Station is for a storage unit to house the Incident Command Vehicle. Ongoing maintenance works will be carried out from Kilkenny Fire and Rescue Service's own financial resources.

4.3 Freshford (Call Sign KK13)



Figure 4:6: Freshford Fire Station

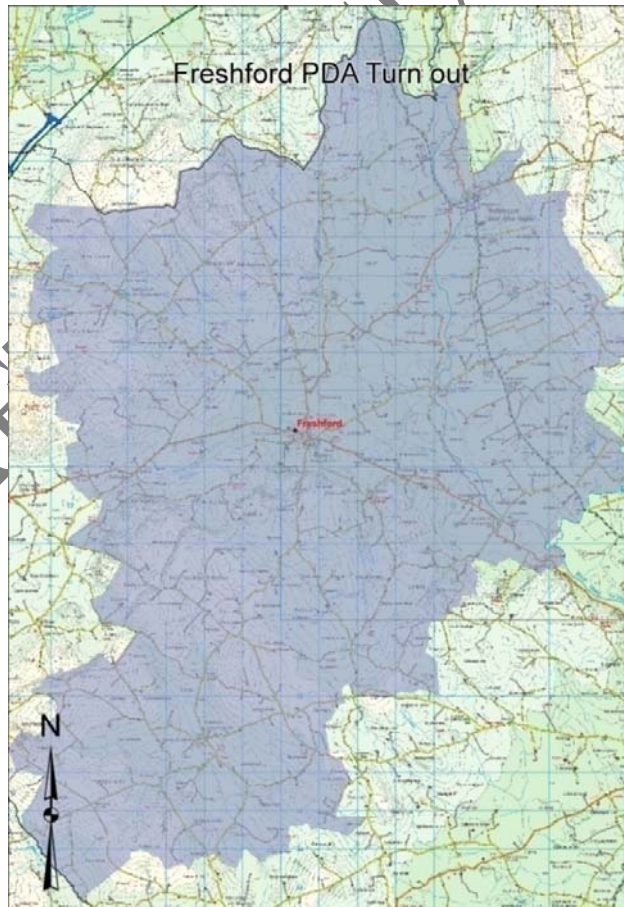


Figure 4:7: Freshford Fire Station Fireground Area

Station Address:	Bohernacrussia Road, Freshford, Co. Kilkenny. R95 RR24
Fireground Population:	5,733 (per NDFEM Risk Based Approach Report May 2012) 5,883 - census population 2016
Fireground Area:	217 Km ²
Total number of call-outs/annum:	2009: 200 2014: 138 2019: 114 2010: 140 2015: 155 2020: 114 2011: 120 2016: 154 2021: 116 2012: 123 2017: 151 2013: 164 2018: 175

4.3.1 The Fire Station at Freshford was completed in 2007. The Retained Station accommodation and facilities consists of -

- A 2-bay appliance room housing 1 No. standard Class B appliances, 1 No. Water Tanker and 1 No. 4-Wheel Drive Appliance
- Muster Bay
- Watch Room
- Meeting Room
- Kitchenette
- Breathing Apparatus Servicing Room
- Store Room
- Female Toilet and Shower facilities
- Male Toilet and Shower facilities
- Drill Yard
- Drill Tower

There is no significant development works planned for Freshford Fire Station. Ongoing maintenance works will be carried out from Kilkenny Fire and Rescue Service's own financial resources.

4.4 Urlingford (Call Sign KKI4)



Figure 4:8: Urlingford Fire Station

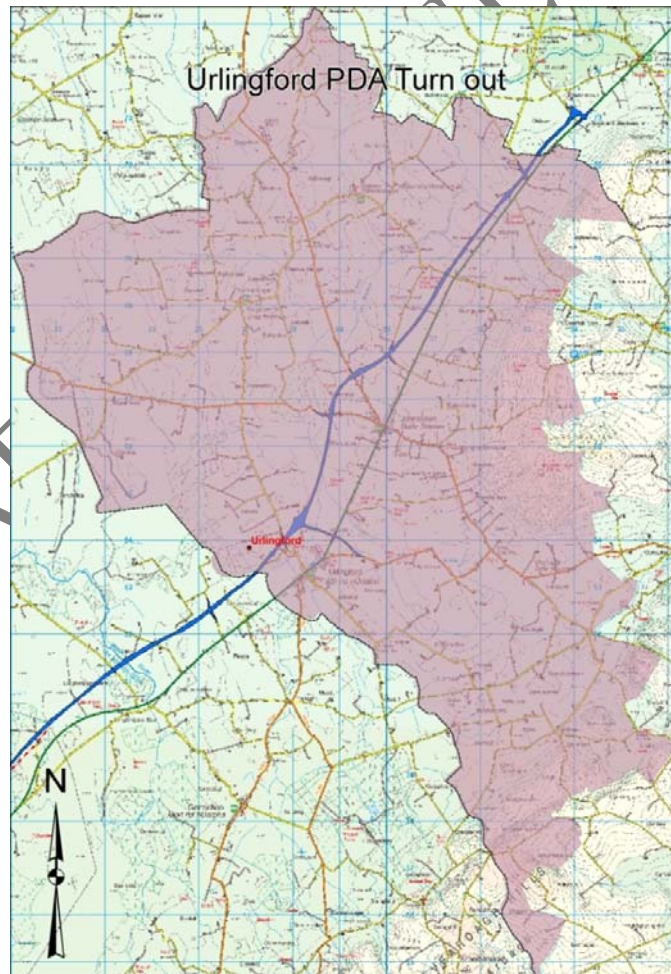


Figure 4:9: Urlingford Fire Station Fireground Area

Station Address:	Main Street, Urlingford, Co. Kilkenny. E41 C958
Fireground Population:	4,909 (per NDFEM Risk Based Approach Report May 2012) 4,856 - census population 2016
Fireground Area:	211 Km ²
Total number of call-outs/annum:	2009: 139 2014: 66 2019: 78 2010: 135 2015: 77 2020: 62 2011: 89 2016: 60 2021: 59 2012: 93 2017: 53 2013: 95 2018: 84

4.4.1 The Retained Station accommodation and facilities consists of -

- A 1 bay appliance room housing 1 No. standard Class B appliances
- Muster Bay
- Watch Room
- Kitchenette
- Store
- Female Toilet and Shower facilities
- Male Toilet and Shower facilities
- Shed for housing 2nd Class B and the VMS
- Limited rear training yard

Capital Funding has been made available from the NDFEM for Fire Station Development Projects, it is planned to construct a new Fire Station in Urlingford at an estimated cost of close to €2,000,000 in 2022.

4.5 Thomastown (Call Sign KK15)



Figure 4:10: Thomastown Fire Station

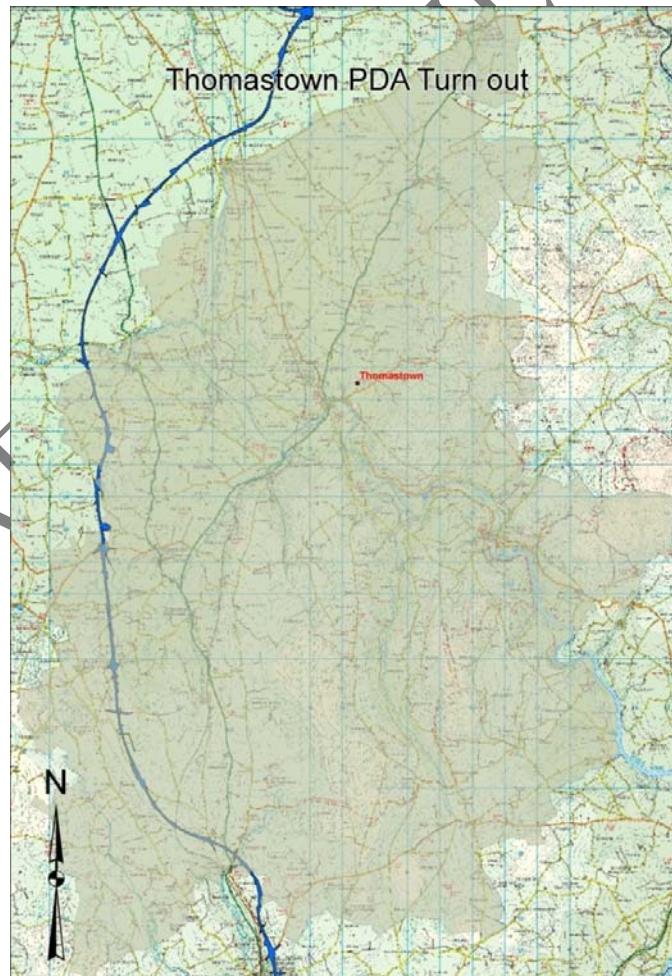


Figure 4:11: Thomastown Fire Station Fireground Area

Station Address:	Kilkenny Road, Thomastown, Co. Kilkenny. R95 AK81
Fireground Population:	11,564 (per NDFEM Risk Based Approach Report May 2012) 12,831 - census population 2016
Fireground Area:	360 Km ²
Total number of call-outs/annum:	2009: 171 2014: 92 2019: 113 2010: 112 2015: 125 2020: 121 2011: 86 2016: 100 2021: 125 2012: 101 2017: 116 2013: 101 2018: 128

4.5.1 - The Retained Station accommodation and facilities consists of-

- An appliance bay room housing 1 No. standard Class B appliances, 1 No. Water Tanker, and 1 No. 4-Wheel Drive appliance
- Parking Spaces
- Muster Bay
- Watch Room
- Lecture Room
- Kitchenette
- Station Officers Office
- Breathing Apparatus Compressor and Servicing Room
- Store
- Drying Room
- Female Toilet and Shower facilities
- Male Toilet and Shower facilities
- Drill Yard
- Storage unit

The only significant development works planned for Thomastown Fire Station is to replace and upgrade the appliance bay doors. Ongoing maintenance works will be carried out from Kilkenny Fire and Rescue Service's own financial resources.

4.6 Callan (Call Sign KK16)



Figure 4:12: Callan Fire Station

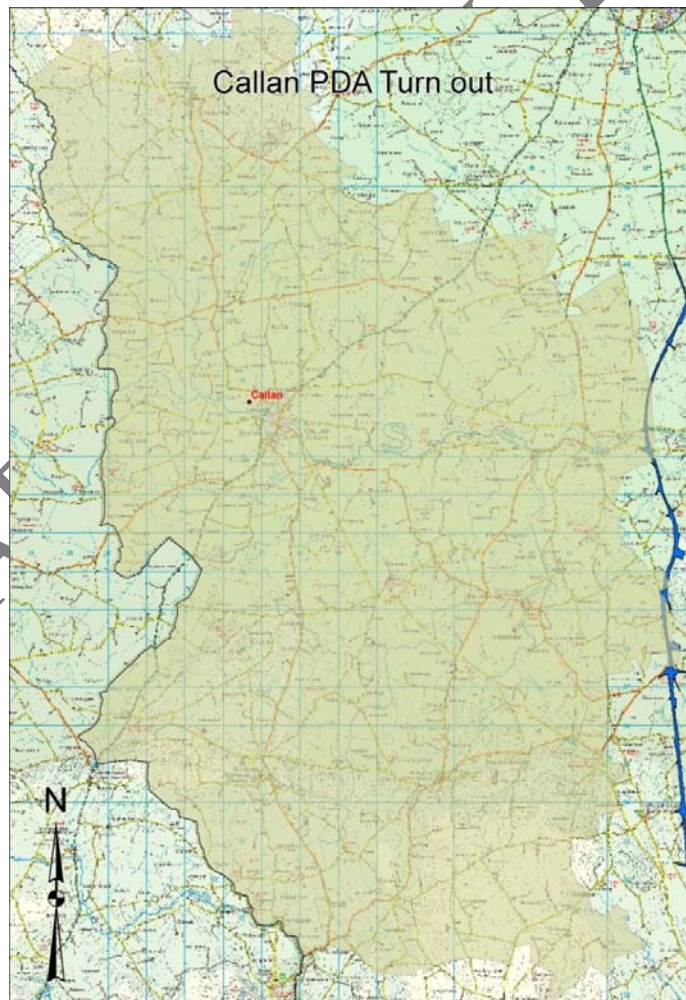


Figure 4:13: Callan Fire Station Fireground Area

Station Address:	Prologue, Callan, Co. Kilkenny. R95 X291
Fireground Population:	11,087 (per NDFEM Risk Based Approach Report May 2012) 11,047 - census population 2016
Fireground Area:	397 Km ²
Total number of call-outs/annum:	2009: 159 2014: 96 2019: 114 2010: 130 2015: 108 2020: 123 2011: 111 2016: 99 2021: 95 2012: 89 2017: 119 2013: 103 2018: 131

4.6.1 - A new Fire Station was completed at Callan in 2003. The Retained Station accommodation and facilities consists of -

- A 2-bay appliance room housing 2 No. standard Class B appliances, and 1 No. 4-Wheel Drive appliance
- Parking Spaces
- Muster Bay
- Watch Room
- Kitchenette/Meeting room
- Breathing Apparatus Servicing area
- Store
- Drying Room
- Female Toilet and Shower facilities
- Male Toilet and Shower facilities
- Drill Yard
- Drill Tower

There is no significant development works planned for Callan Fire Station. Ongoing maintenance works will be carried out from Kilkenny Fire and Rescue Service's own financial resources.

4.7 Graiguenamanagh (Call Sign KK17)



Figure 4:14: Graiguenamanagh Fire Station

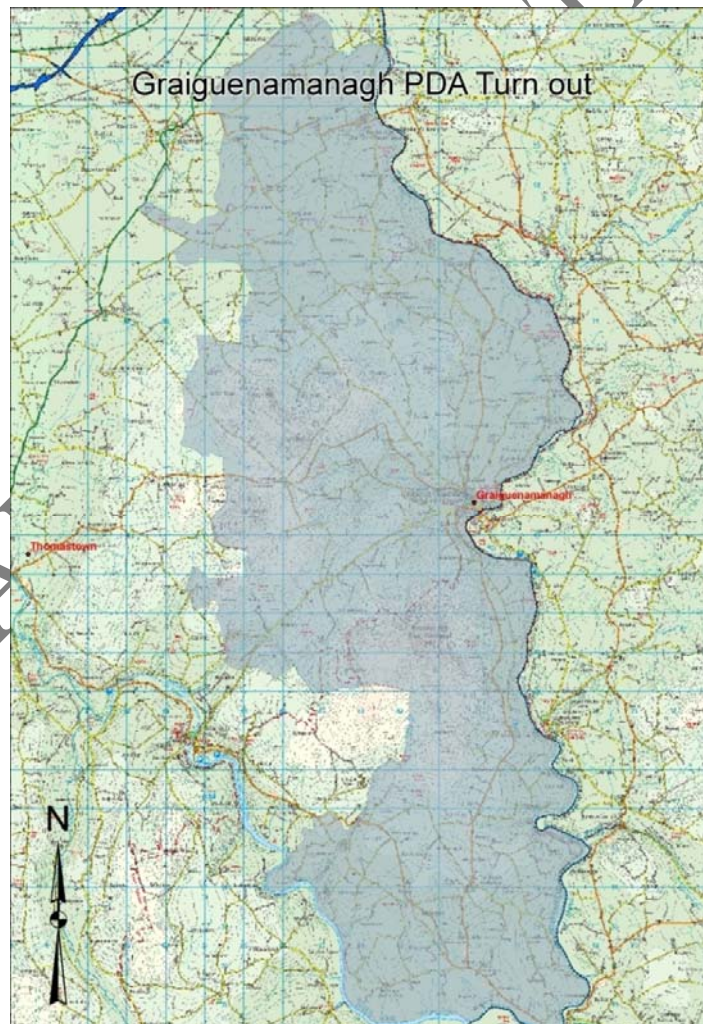


Figure 4:15: Graiguenamanagh Fire Station Fireground Area

Station Address:	High Street, Graiguenamanagh, Co. Kilkenny. R95 ACIF
Fireground Population:	6,895 (per NDFEM Risk Based Approach Report May 2012) 6,705 - census population 2016
Fireground Area:	251 Km ²
Total number of call-outs/annum:	2009: 132 2014: 55 2019: 68 2010: 92 2015: 60 2020: 80 2011: 66 2016: 52 2021: 73 2012: 61 2017: 56 2013: 44 2018: 63

4.7.1 A new Fire Station was completed at Graiguenamanagh in 2018. The Retained Station accommodation and facilities consists of -

- A 2-bay appliance room housing 2 No. standard Class B appliances, and 1 No. 4-Wheel Drive appliance
- Parking Spaces
- Muster Bay
- Watch Room
- Kitchenette/Meeting room
- Breathing Apparatus Servicing area
- Store
- Drying Room
- Female Toilet and Shower facilities
- Male Toilet and Shower facilities
- Drill Yard
- Drill Tower

There is no significant development works planned for Graiguenamanagh Fire Station. Ongoing maintenance works will be carried out from Kilkenny Fire and Rescue Service's own financial resources.

Objectives for the Period of this Plan:

Kilkenny Fire and Rescue Service will build new fire stations for Urlingford and Kilkenny City fire brigades subject to Government funding.

It also intends to carry out ongoing maintenance at all Fire Stations through its own resources.

DRAFT - CONSULTATION