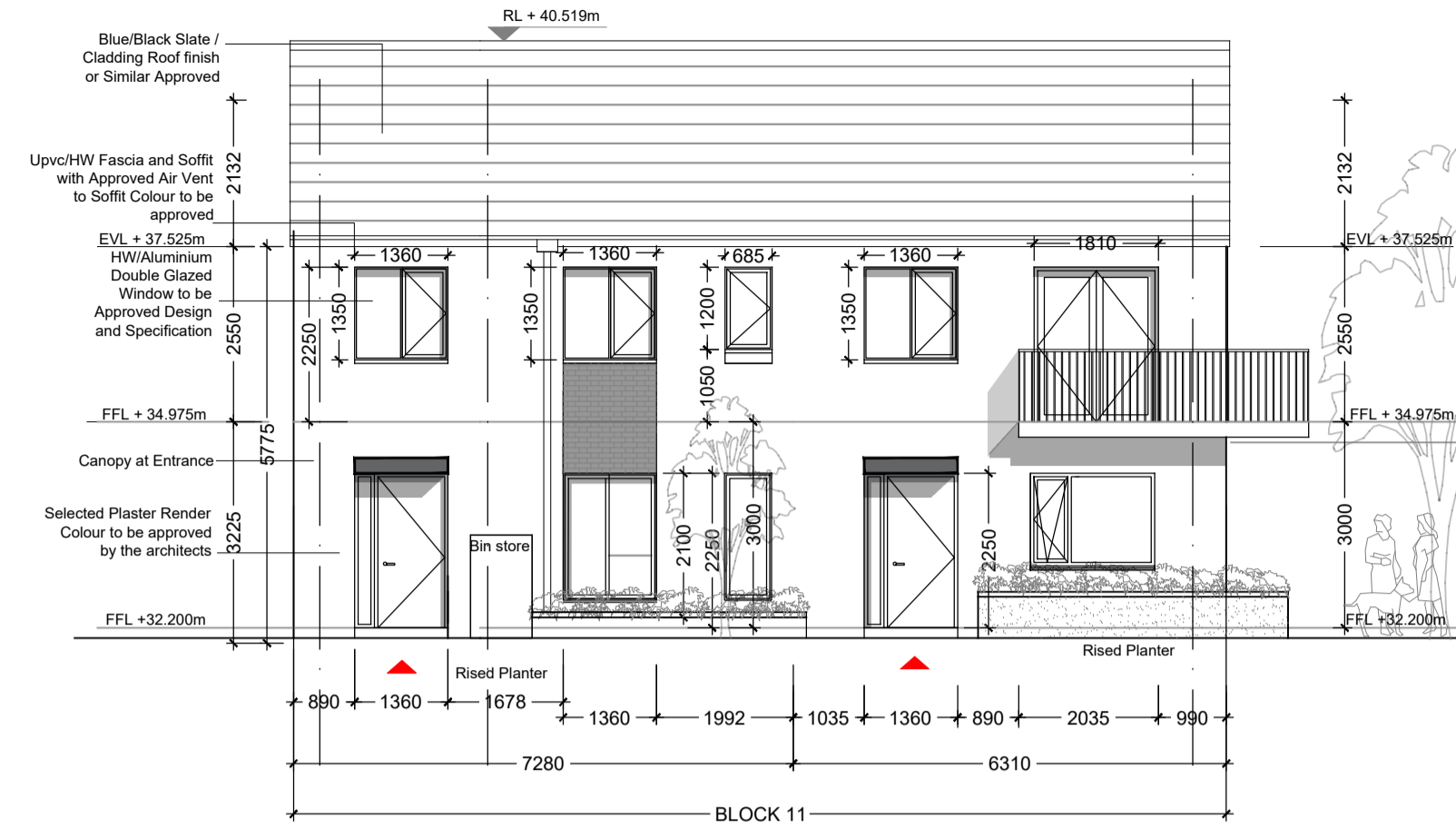




01 SOUTH ELEVATION  
100 BLOCK 11 1:100



04 NORTH ELEVATION  
100 BLOCK 11 1:100

Quality Housing for Sustainable Communities space provision						
X1	Dwelling Type	Gross Floor Area	Aggregate living area	Aggregate bedroom area	Storage	Private Amenity Space
Target	1 Bed 2P Apart.	45 m <sup>2</sup>	23 m <sup>2</sup>	11.4 m <sup>2</sup>	3 m <sup>2</sup>	5 m <sup>2</sup>
Proposed	1 Bed 2P Apart.	53.7 m <sup>2</sup>	23 m <sup>2</sup>	12.6 m <sup>2</sup>	4.8 m <sup>2</sup>	23.3 m <sup>2</sup>

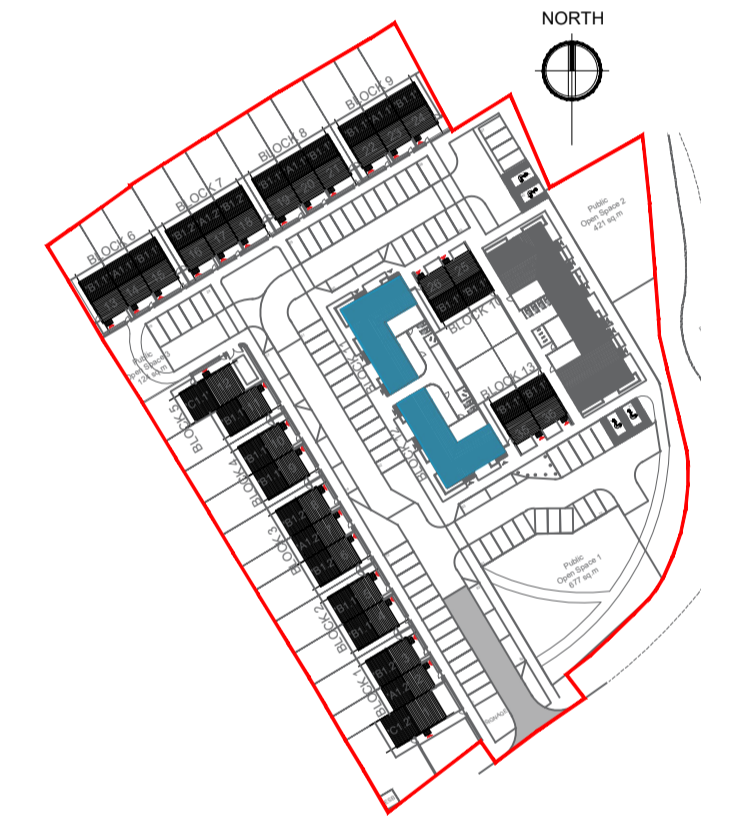
Quality Housing for Sustainable Communities space provision						
X3	Dwelling Type	Gross Floor Area	Aggregate living area	Aggregate bedroom area	Storage	Private Amenity Space
Target	1 Bed 2P Apart.	45 m <sup>2</sup>	23 m <sup>2</sup>	11.4 m <sup>2</sup>	3 m <sup>2</sup>	5 m <sup>2</sup>
Proposed	1 Bed 2P Apart.	53.7 m <sup>2</sup>	27.1 m <sup>2</sup>	11.45 m <sup>2</sup>	3.01 m <sup>2</sup>	5.6 m <sup>2</sup>

Quality Housing for Sustainable Communities space provision						
X2	Dwelling Type	Gross Floor Area	Aggregate living area	Aggregate bedroom area	Storage	Private Amenity Space
Target	1 Bed 2P Apart.	45 m <sup>2</sup>	23 m <sup>2</sup>	11.4 m <sup>2</sup>	3 m <sup>2</sup>	5 m <sup>2</sup>
Proposed	1 Bed 2P Apart.	55.3 m <sup>2</sup>	23.1 m <sup>2</sup>	14.1 m <sup>2</sup>	3.8 m <sup>2</sup>	26.9 m <sup>2</sup>

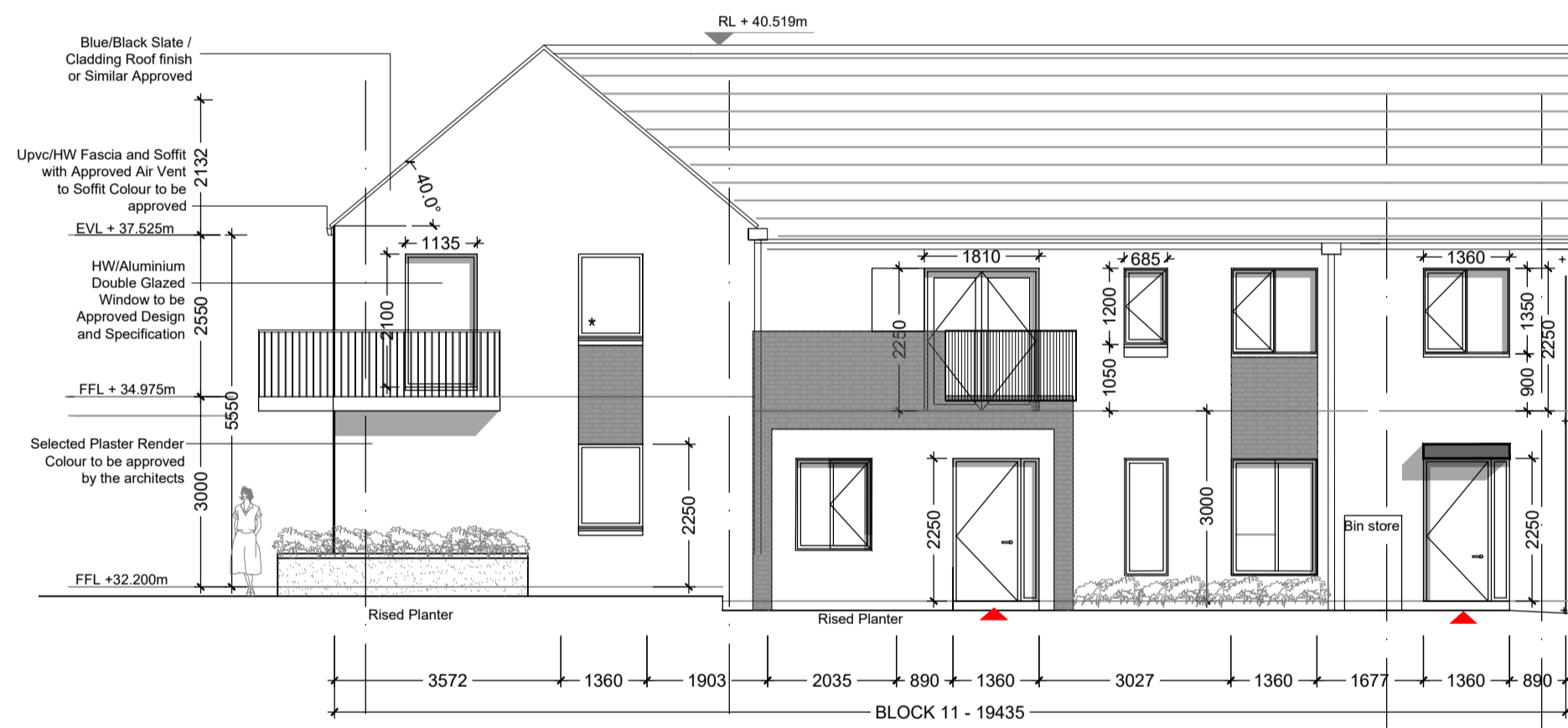
Quality Housing for Sustainable Communities space provision						
X4	Dwelling Type	Gross Floor Area	Aggregate living area	Aggregate bedroom area	Storage	Private Amenity Space
Target	1 Bed 2P Apart.	45 m <sup>2</sup>	23 m <sup>2</sup>	11.4 m <sup>2</sup>	3 m <sup>2</sup>	5 m <sup>2</sup>
Proposed	1 Bed 2P Apart.	55.3 m <sup>2</sup>	28.5 m <sup>2</sup>	11.42 m <sup>2</sup>	3.01 m <sup>2</sup>	8.15 m <sup>2</sup>

Quality Housing for Sustainable Communities space provision						
X5	Dwelling Type	Gross Floor Area	Aggregate living area	Aggregate bedroom area	Storage	Private Amenity Space
Target	1 Bed 2P Apart.	45 m <sup>2</sup>	23 m <sup>2</sup>	11.4 m <sup>2</sup>	3 m <sup>2</sup>	5 m <sup>2</sup>
Proposed	1 Bed 2P Apart.	56.7 m <sup>2</sup>	24.4 m <sup>2</sup>	14.1 m <sup>2</sup>	3.8 m <sup>2</sup>	26.9 m <sup>2</sup>

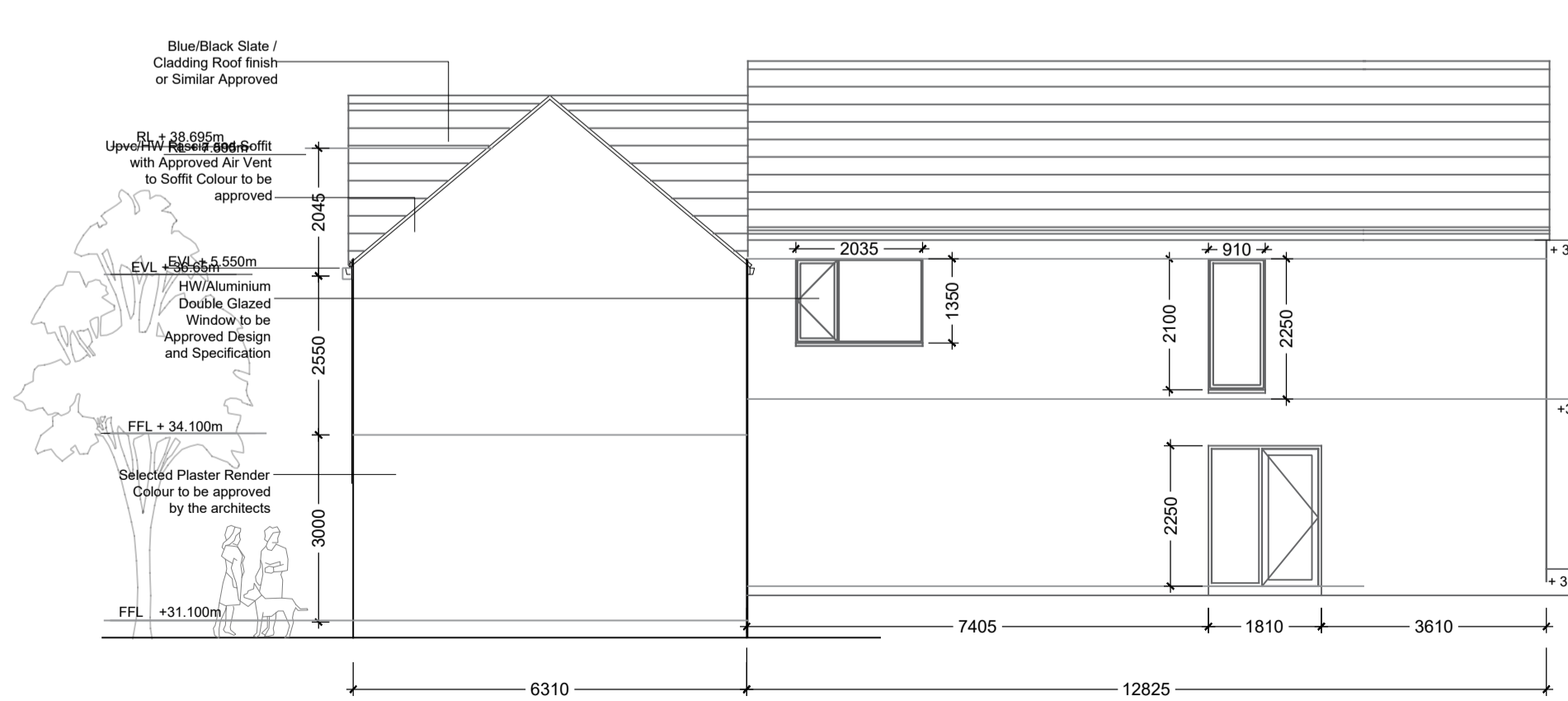
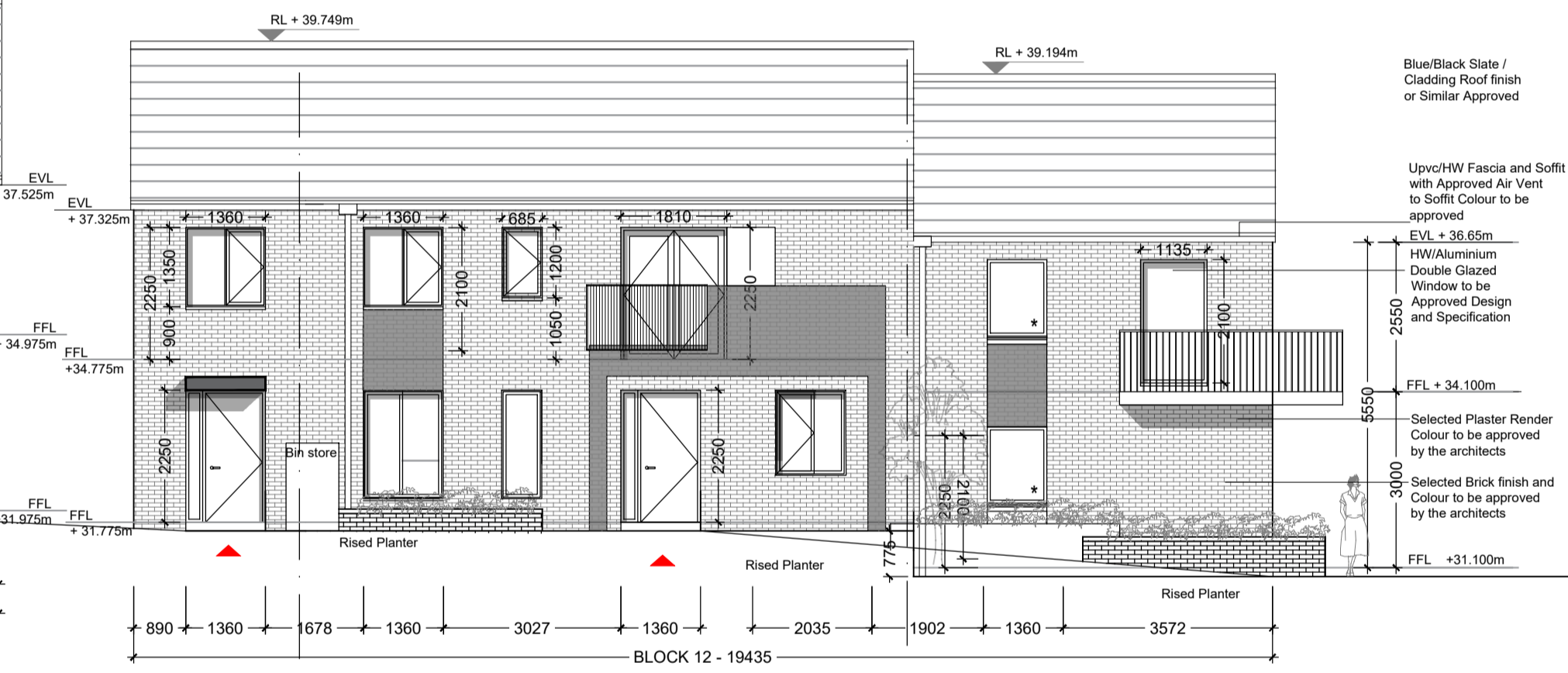
Quality Housing for Sustainable Communities space provision						
X6	Dwelling Type	Gross Floor Area	Aggregate living area	Aggregate bedroom area	Storage	Private Amenity Space
Target	1 Bed 2P Apart.	45 m <sup>2</sup>	23 m <sup>2</sup>	11.4 m <sup>2</sup>	3 m <sup>2</sup>	5 m <sup>2</sup>
Proposed	1 Bed 2P Apart.	56.7 m <sup>2</sup>	28.5 m <sup>2</sup>	12.1 m <sup>2</sup>	3.01 m <sup>2</sup>	8.15 m <sup>2</sup>



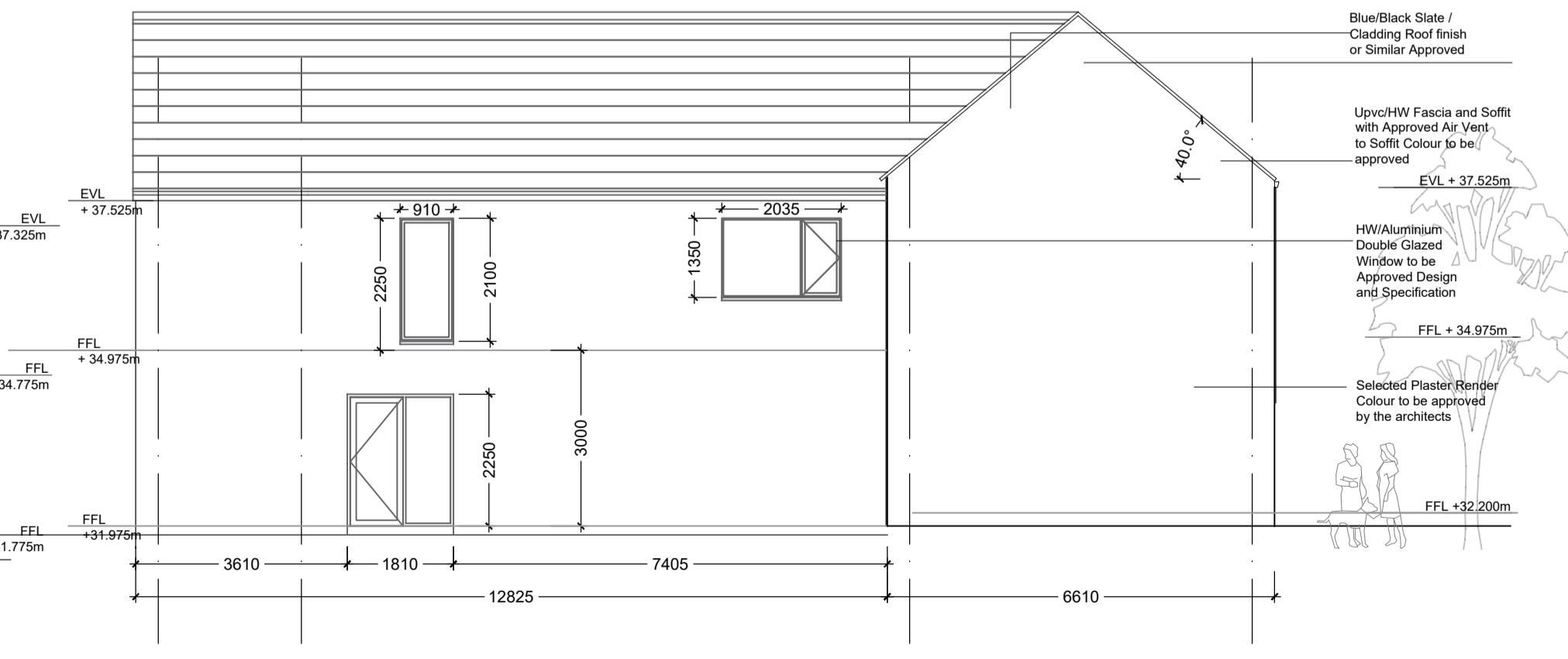
10 KEY PLAN  
100 1:1500



03 FRONT ELEVATION (WEST)  
100 BLOCK 11 1:100



03 REAR ELEVATION (EAST)  
100 BLOCK 11 1:100



Rev.	By	Date	Description
-	SOR	26.05.2023	PRE-PLANNING SUBMISSION



Mill House, Mill Street, Dundalk, Co. Louth info@vandijkarchitects.com  
+353 (0) 42 935 4466 www.vandijkarchitects.com

Drawing Title: **Blocks 11 - Sheet 2 Plans, Sections & Elevations**

Scale	Drawing Number	Job
1:100	2229-PA-101	Abbey Hill, Thomastown
Revision	Client	
A1	2229-PA-101	Kilkenny CoCo
Drawn by	Date	
GOR	MAY 2023	

All works to be carried out using proper materials which are fit for the use they are intended and for the condition in which they are to be used. All materials used in connection with the works to comply with the construction products regulation (cpr) no. 305/2011 and the harmonised technical specifications/standards that fall within the remit of the cpr no. 305/2011.  
Figured dimensions must be used in preference to scaled dimensions. Any dimensional discrepancies must be reported to the Architect immediately. This drawing remains the copyright of van Dijk Architects. It must not be used for any purpose building or otherwise without the express permission of this practice. Do not copy or redistribute these drawings or any additional information without the express approval of van Dijk Architects.