



Safe Routes to School

Loreto Secondary School and St. Canice's Primary School



Comhairle Chontae Chill Chainnigh
Kilkenny County Council

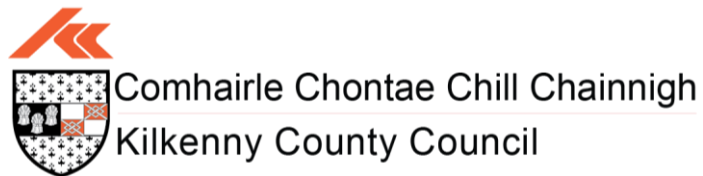




Safe Routes to School Programme

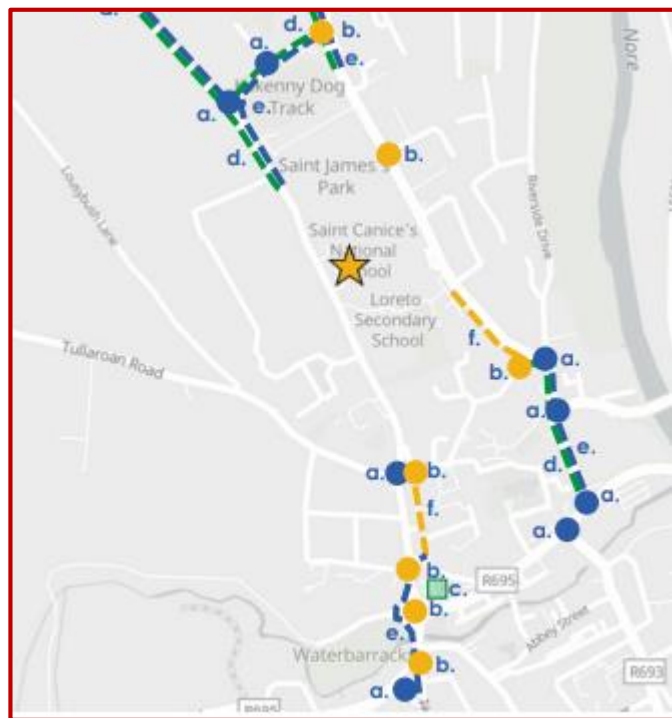
This plan contains interventions to improve infrastructure outside and on the routes to school with the aim of increasing the number of children who walk, wheel, cycle or scoot to school.

These proposed interventions are based on survey findings, audits and consultation with Loreto Secondary School and St. Canice's Primary School. The Safe Routes to School (SRTS) Programme launched in March 2021 and was open to all schools in Ireland to apply for active travel funding and delivery. The programme is an initiative of the Department of Transport and supported by the Department of Education. It is operated by the Green-Schools Programme in partnership with the National Transport Authority (NTA) and the local authorities. The interventions described below will be delivered by Kilkenny County Council.



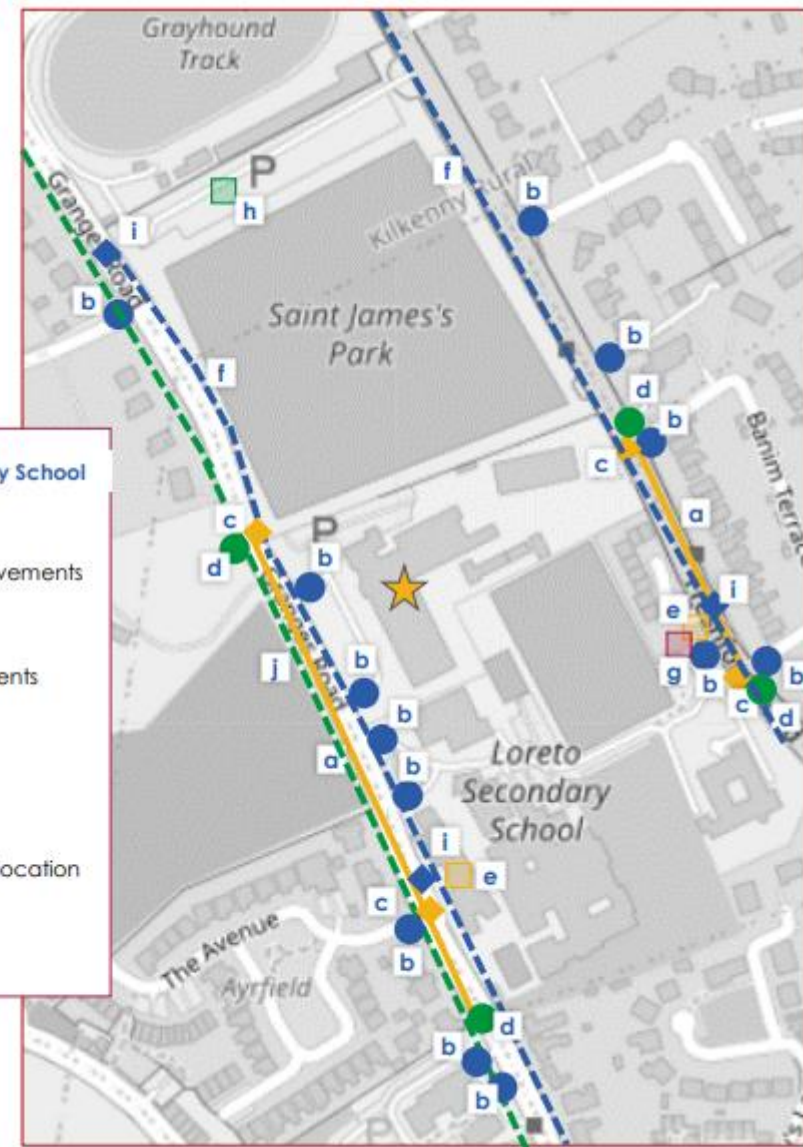
Front of School Improvements

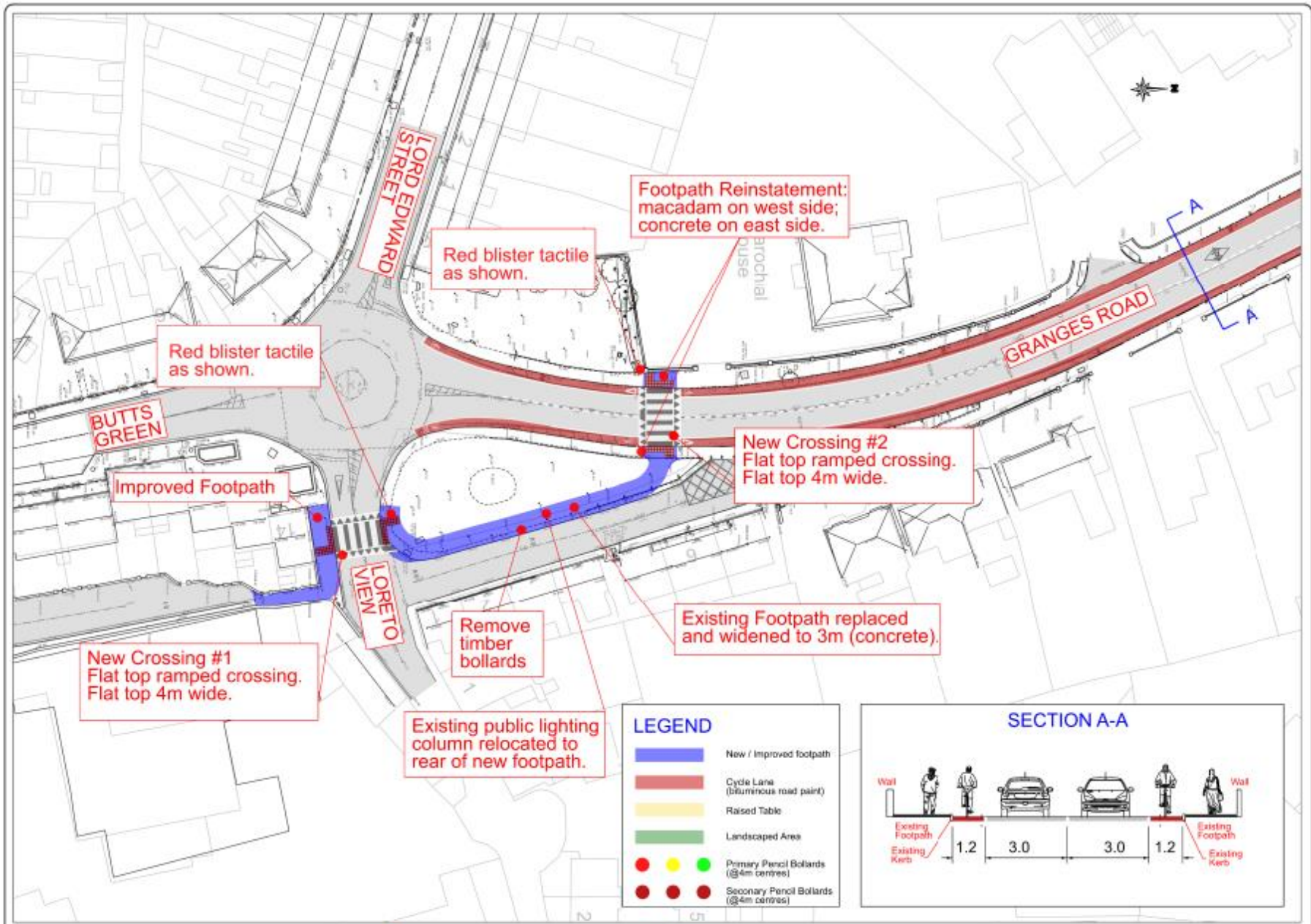
The school zone encompasses front-of-school areas for both Loreto Secondary School and St. Canice's Co-Ed National School to the north. The school zone aims to improve safety and visibility of both schools, calm traffic, and enrich the area through placemaking and planting. Student safety will also be enhanced through pedestrian priority at junctions and improved segregated cycle facilities. Student safety at the rear will also be addressed with the removal of parking opportunities and a crossing to access the bus stop.

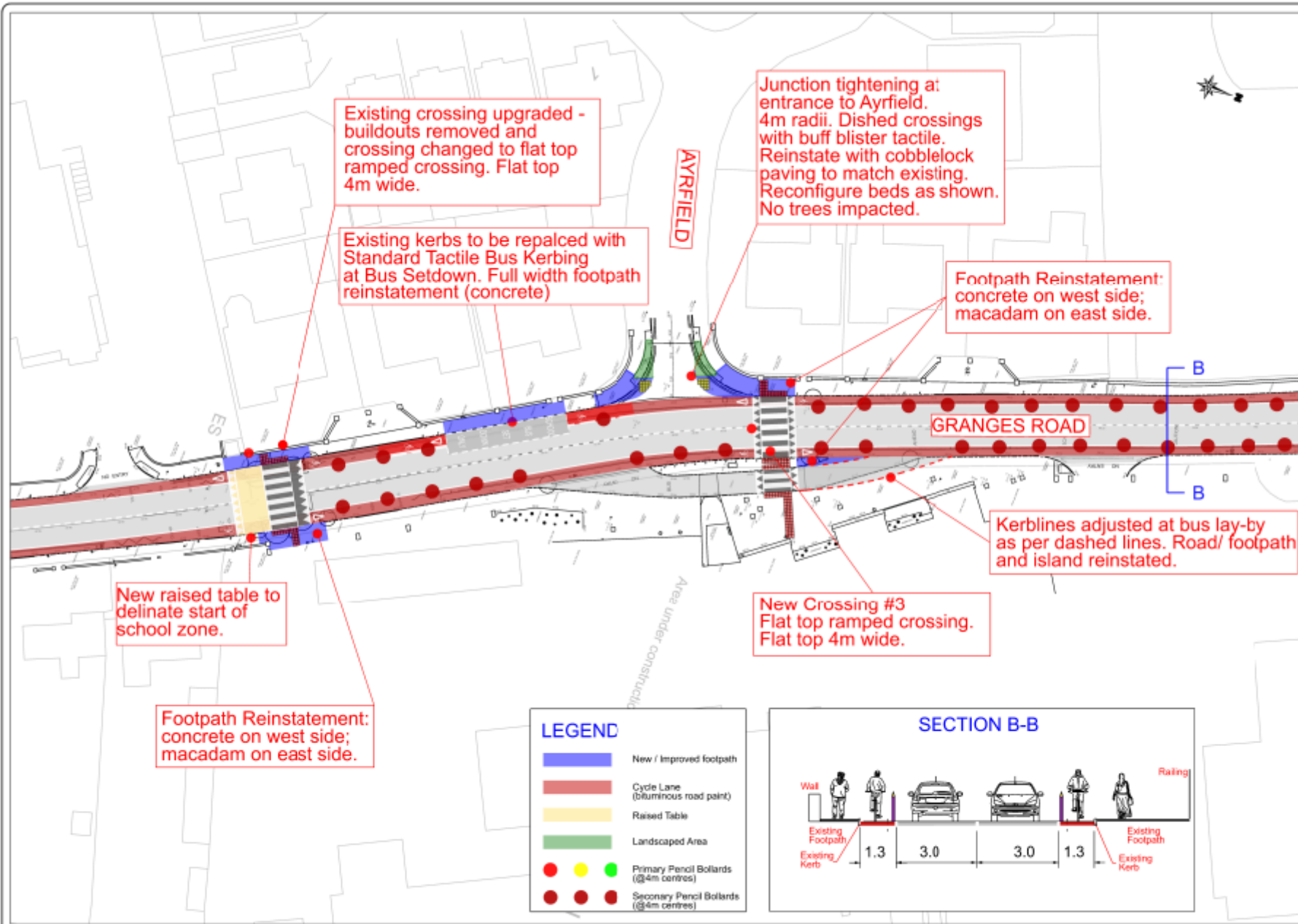


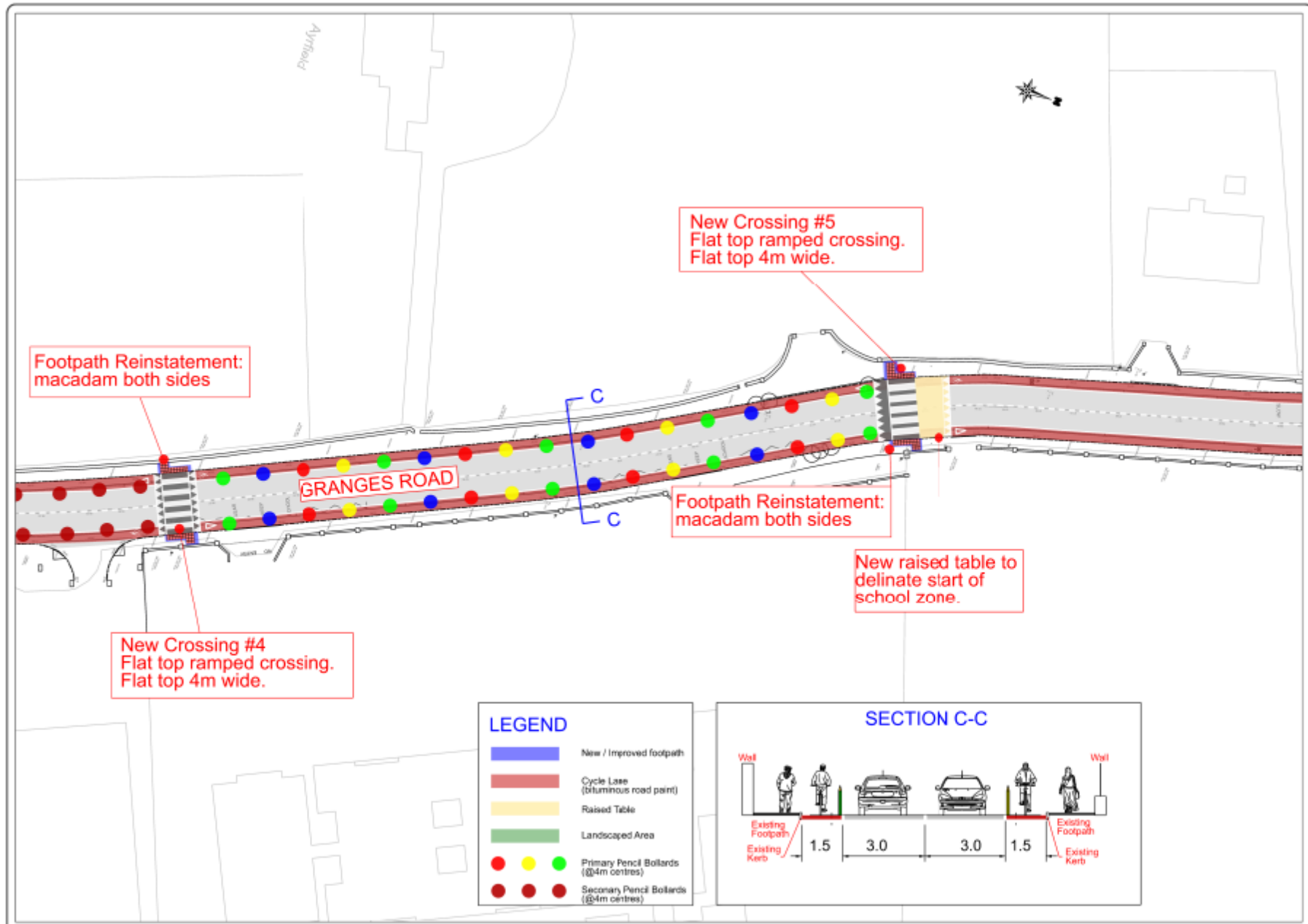
- ★ Loreto Secondary School
- a. Junction improvements
- b. Crossing new/upgrade
- c. Park N Stride
- d. Walking Links
- e. Cycling Links
- f. Shared space

- ★ Loreto Secondary School
- a. School Zone
- b. Junction improvements
- ◆ c. Raised Table
- d. Gateway elements
- e. Planting
- f. Cycling Links
- g. Place-making
- h. Park and Stride location
- ◆ i. Crossing facility
- j. Walking Links



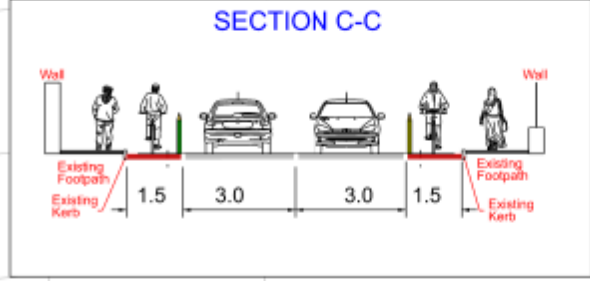


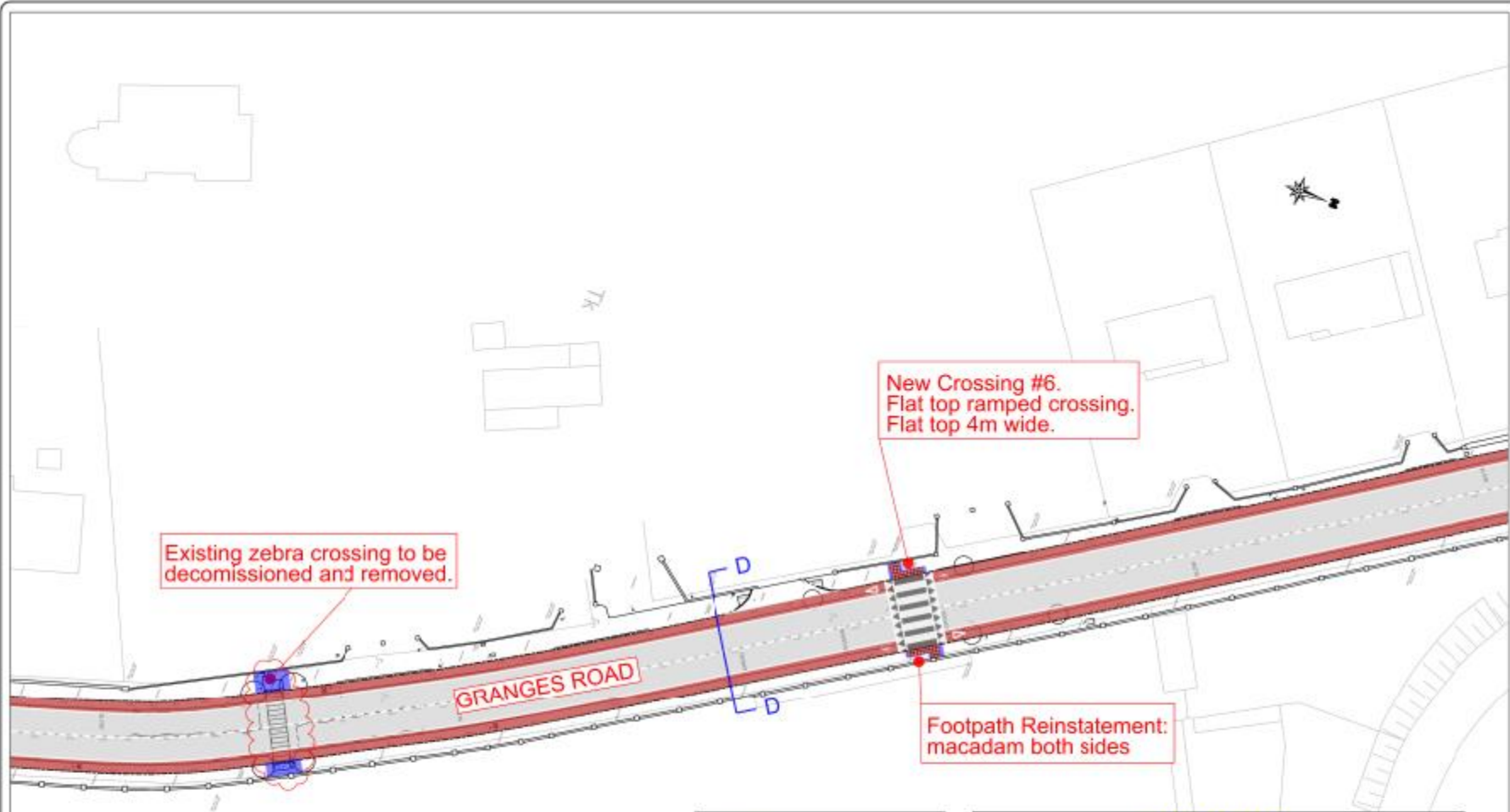




LEGEND

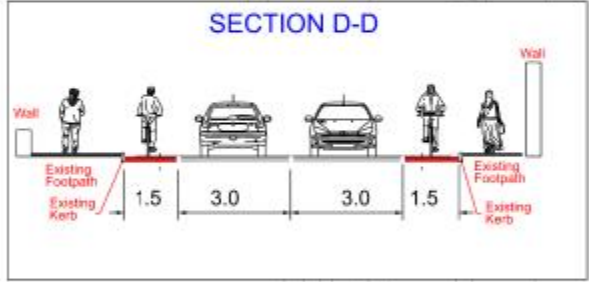
- New / Improved footpath
- Cycle Lane (bituminous road paint)
- Raised Table
- Landscaped Area
- Primary Pencil Bollards (Ø4m centres)
- Secondary Pencil Bollards (Ø4m centres)



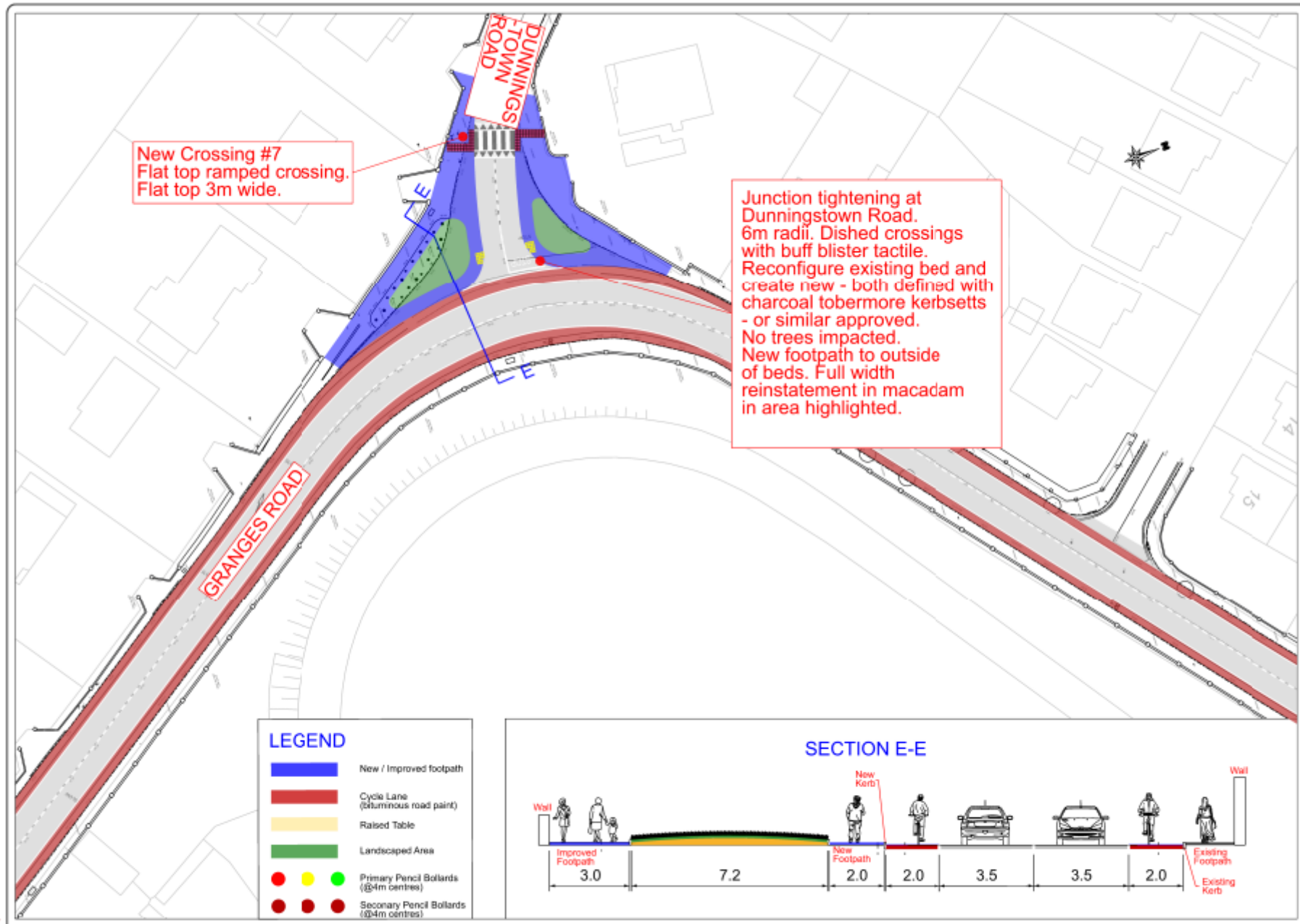


LEGEND

	New / Improved footpath
	Cycle Lane (bituminous road paint)
	Raised Table
	Landscaped Area
	Primary Pencil Bollards (@4m centres)
	Secondary Pencil Bollards (@4m centres)



Project	Granges Road / Footpath Road Active Travel Improvement Works		
Component	Layer 4 of 10		
Title	Section 3B		
Designed By	B. Sheehan	File Name	NTA
Drawn By	B. Sheehan	Scale	NTA
Checked By	T. Gerbin	Date	30/08/2023



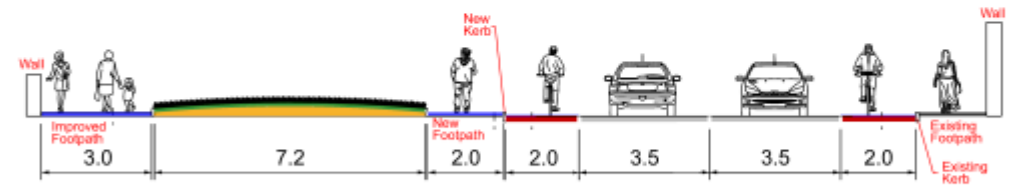
New Crossing #7
Flat top ramped crossing.
Flat top 3m wide.

Junction tightening at
Dunningstown Road.
6m radii. Dished crossings
with buff blister tactile.
Reconfigure existing bed and
create new - both defined with
charcoal tobermore kerbsetts
- or similar approved.
No trees impacted.
New footpath to outside of
beds. Full width
reinstatement in macadam
in area highlighted.

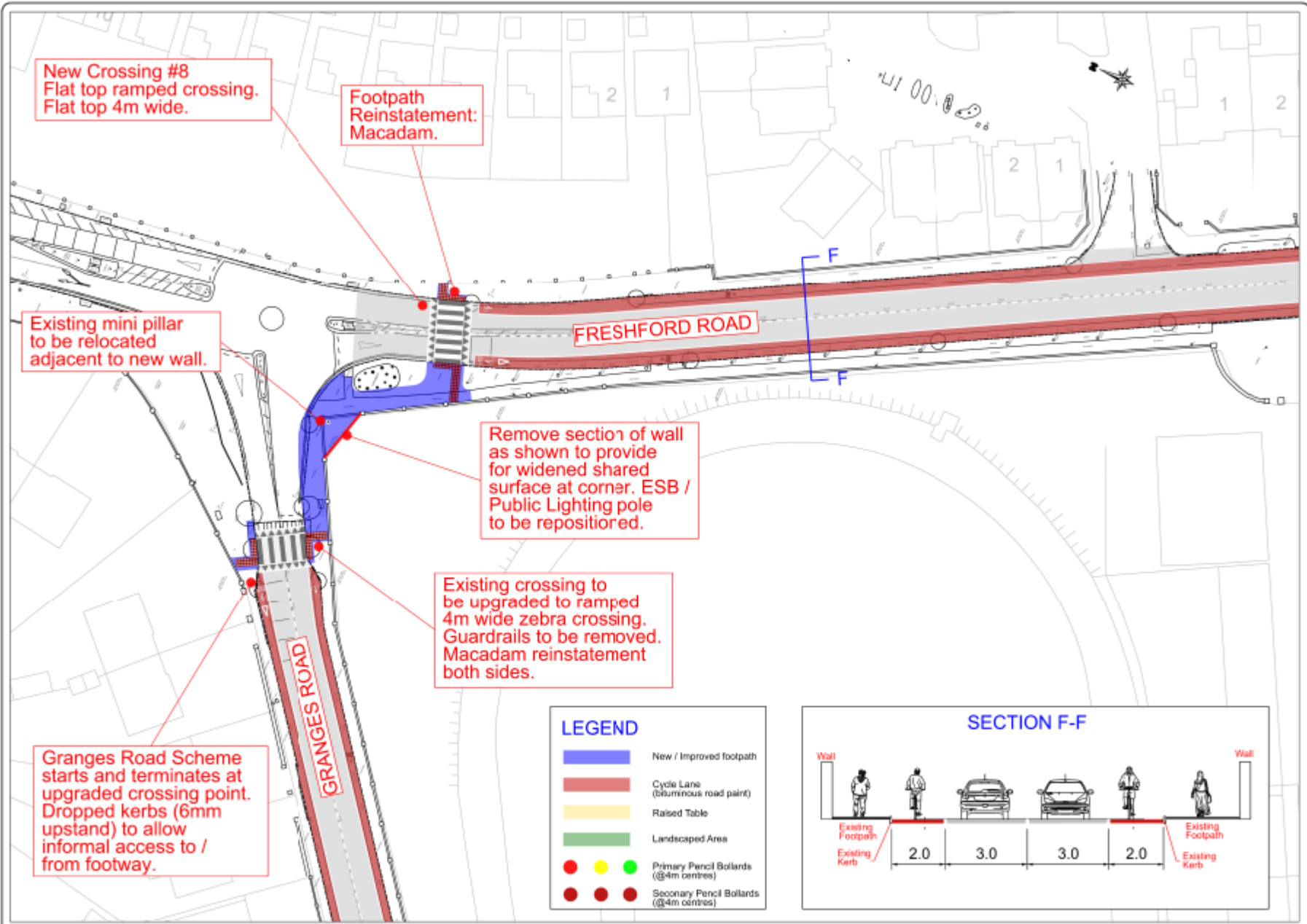
LEGEND

- New / Improved footpath
- Cycle Lane (luminescent road paint)
- Raised Table
- Landscaped Area
- Primary Pencil Bollards (Ø4m centres)
- Secondary Pencil Bollards (Ø4m centres)

SECTION E-E



Project: Granges Road / Fiesford Road Active Travel Improvement Works			
Component: Layer 5 of 10			
Title: Section 36			
Designed By: E. Sheehan	File Name:	Drawn In:	
Drawn By: E. Sheehan	Scale: NTS	Drawn By:	
Checked By: L. Gardner	Date: 30/08/2023	Drawn By:	



New Crossing #8
Flat top ramped crossing.
Flat top 4m wide.

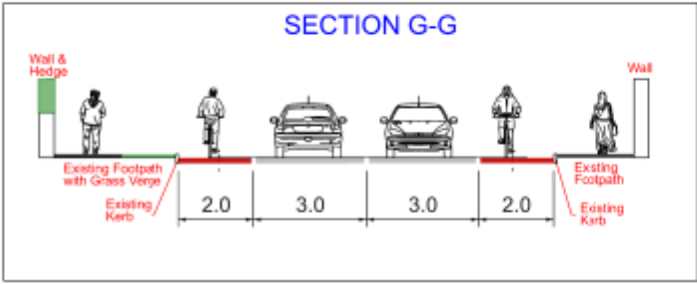
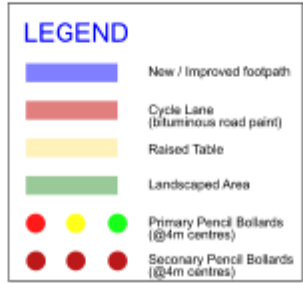
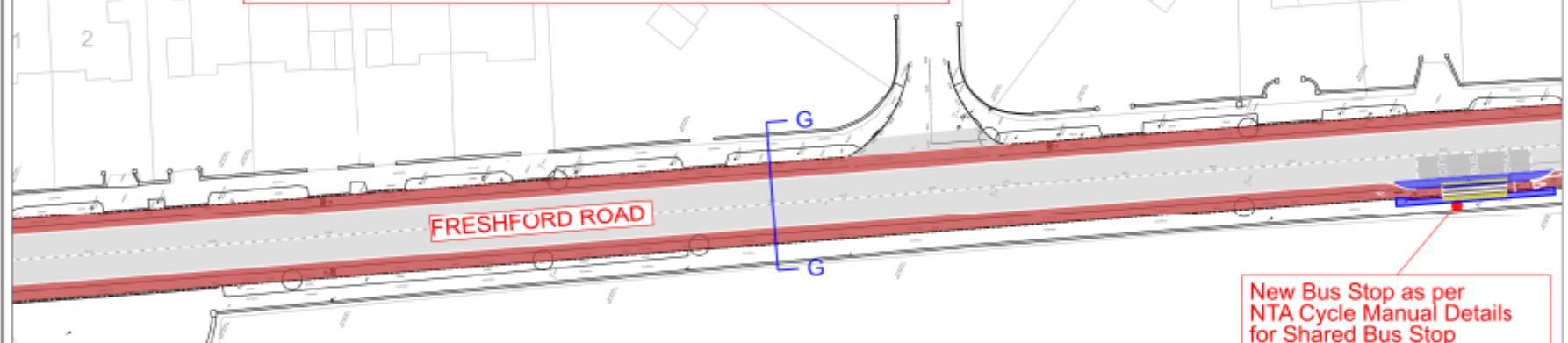
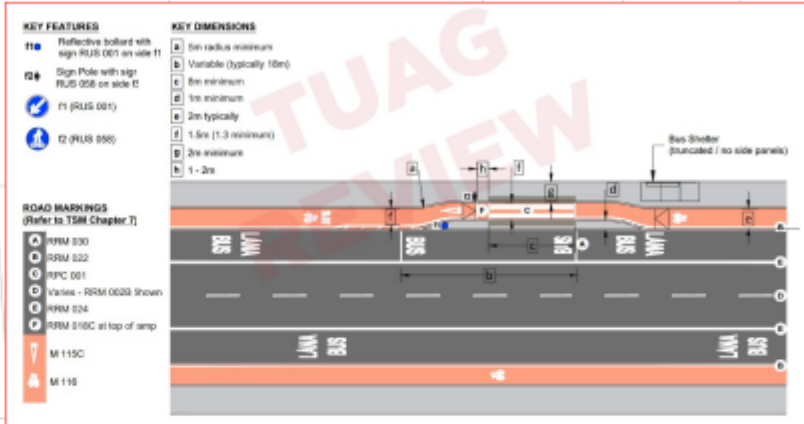
Footpath
Reinstatement:
Macadam.

Existing mini pillar
to be relocated
adjacent to new wall.

Remove section of wall
as shown to provide
for widened shared
surface at corner. ESB /
Public Lighting pole
to be repositioned.

Existing crossing to
be upgraded to ramped
4m wide zebra crossing.
Guardrails to be removed.
Macadam reinstatement
both sides.

Granges Road Scheme
starts and terminates at
upgraded crossing point.
Dropped kerbs (6mm
upstand) to allow
informal access to /
from footway.



New Bus Stop as per NTA Cycle Manual Details for Shared Bus Stop Landing Zone. See inset. Macadam reinstatement. Buff blister tactile to sides of crossing. Tactile bus kerbs to road side.

KEY FEATURES

- 110 Reflective bollard with sign RUS 001 on side 11
- 111 Sign Pole with sign RUS 008 on side 12
- 112 F1 (RUS 001)
- 113 Q (RUS 000)

ROADMARKINGS
(Refer to TSM Chapter 7)

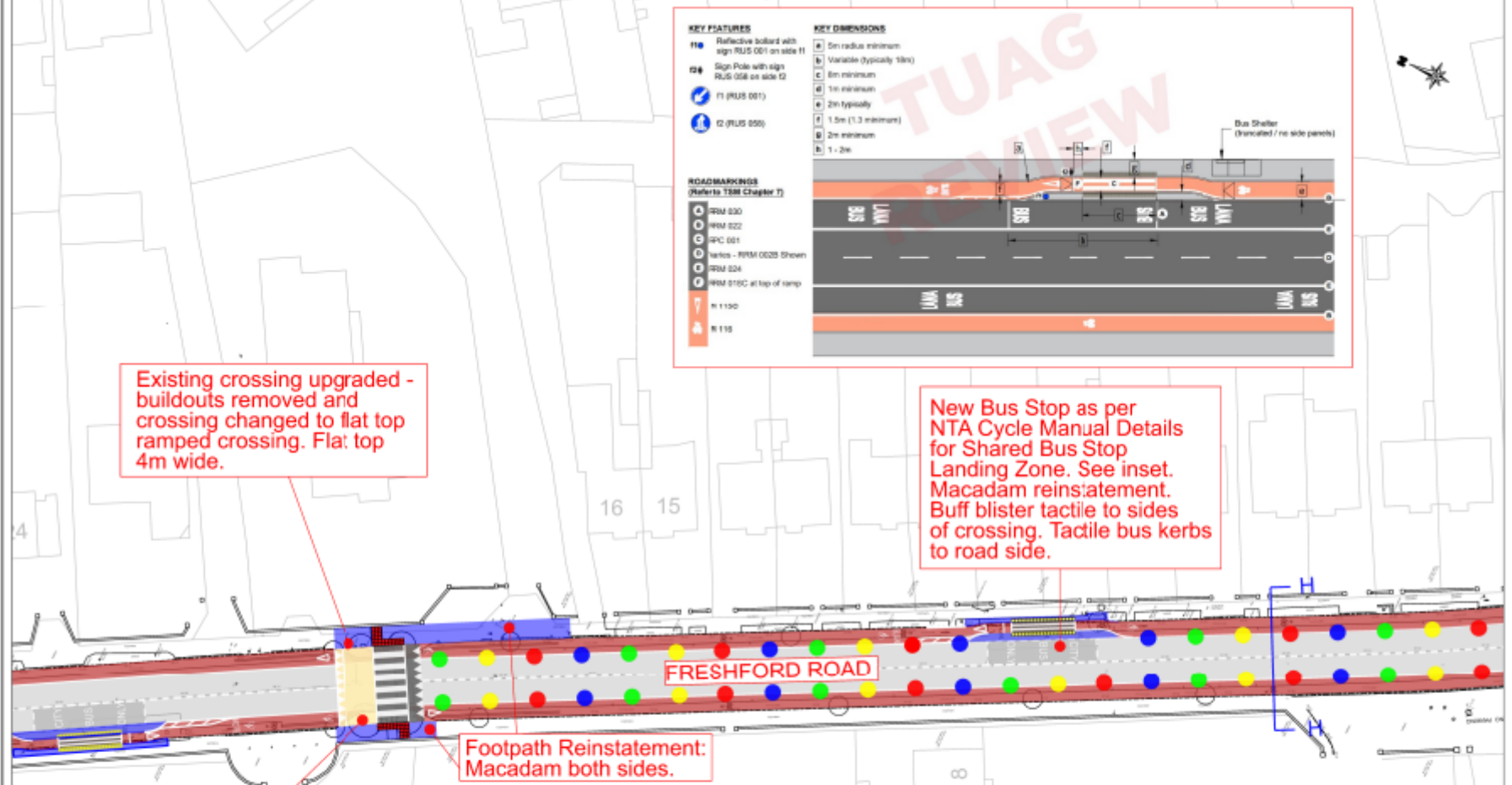
- RM 030
- RM 022
- SPC 001
- Arrows - RRM 0020 Shown
- RM 024
- RM 010C at top of ramp
- R 1100
- R 110

KEY DIMENSIONS

- a) 5m radius minimum
- b) Variable (typically 15m)
- c) 6m minimum
- d) 1m minimum
- e) 2m typically
- f) 1.5m (1.3 minimum)
- g) 2m minimum
- h) 1 - 2m

Existing crossing upgraded - buildouts removed and crossing changed to flat top ramped crossing. Flat top 4m wide.

New Bus Stop as per NTA Cycle Manual Details for Shared Bus Stop Landing Zone. See inset. Macadam reinstatement. Buff blister tactile to sides of crossing. Tactile bus kerbs to road side.

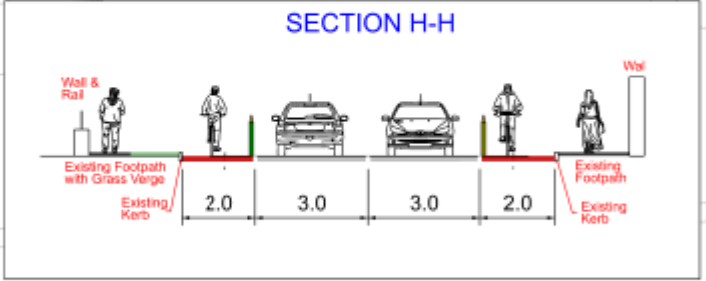


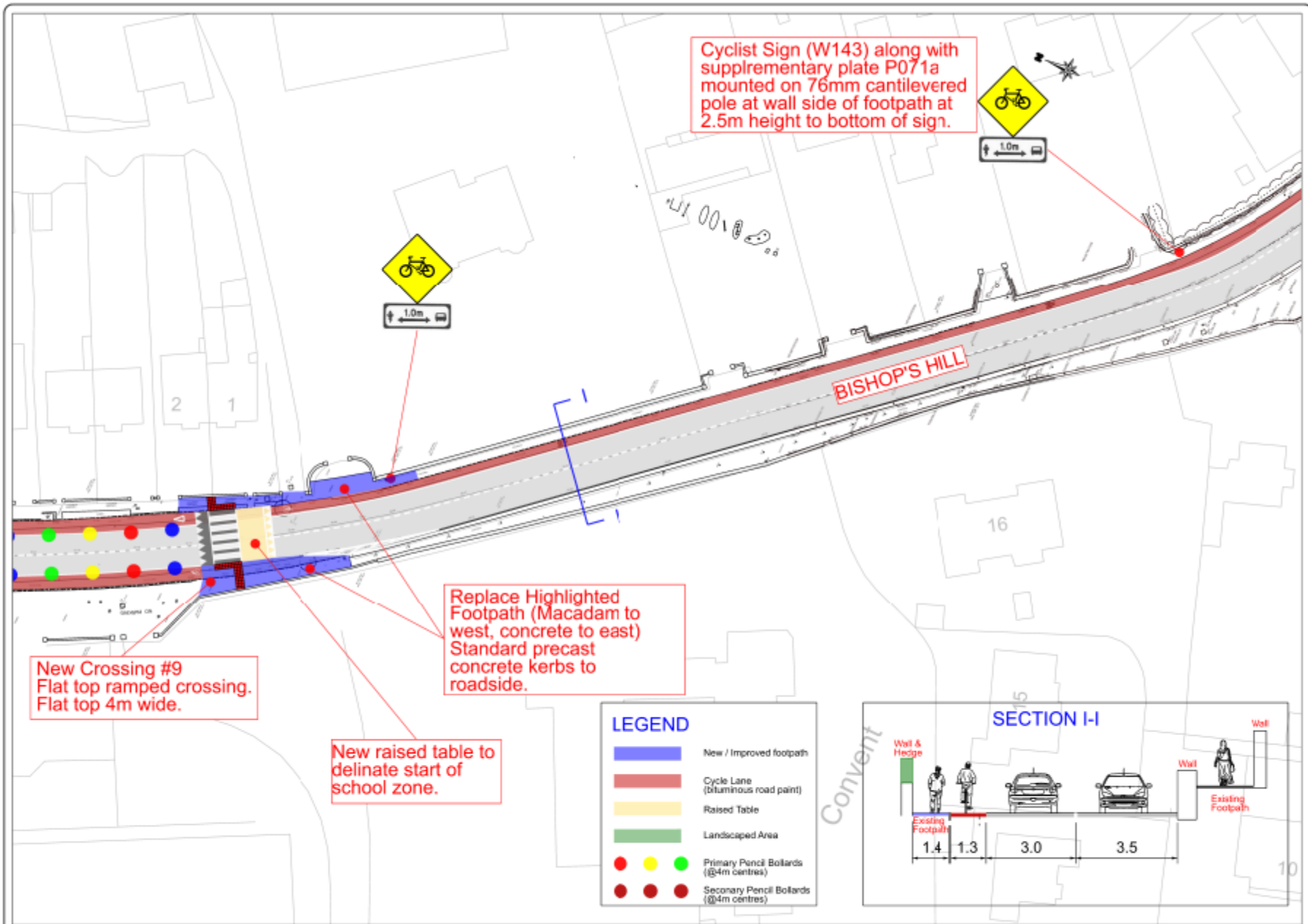
New raised table to delineate start of school zone.

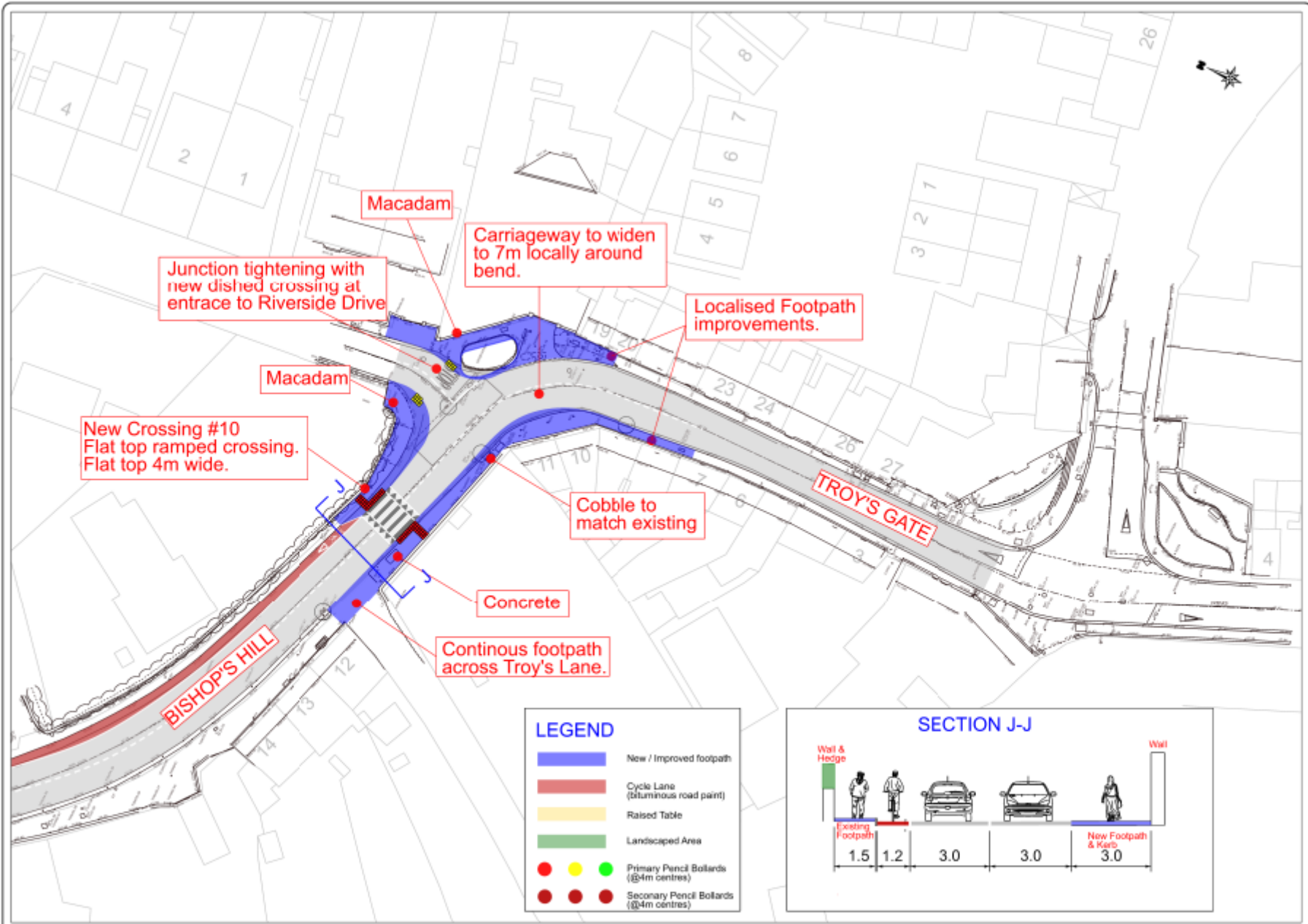
Footpath Reinstatement: Macadam both sides.

LEGEND

- New / Improved footpath
- Cycle Lane (bituminous road paint)
- Raised Table
- Landscaped Area
- Primary Pencil Bollards (Ø4m centres)
- Secondary Pencil Bollards (Ø4m centres)

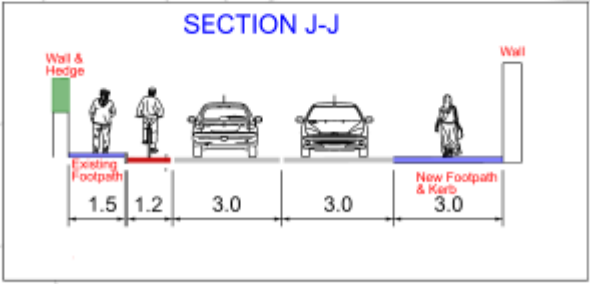






LEGEND

	New / Improved footpath
	Cycle Lane (bituminous road paint)
	Raised Table
	Landscaped Area
	Primary Pencil Bollards (@4m centres)
	Secondary Pencil Bollards (@4m centres)
	Secondary Pencil Bollards (@4m centres)



Project	Oranget Road / Freshford Road Active Travel Improvement Works		
Component	Section 3B		
Title	Layout 13 of 10		
Designed By	E. Sheehan	File Name	
Drawn By	E. Sheehan	Scale	NTS
Checked By	L. Gardner	Date	30/08/2023
			Drawing No. AT-2023-24810-001 - T

Safe Routes to School

Loreto Secondary School and St. Canice's Primary School

Submissions or observations may be made:

By email to:

activetravel@kilkennycoco.ie

Online:

<https://consult.kilkenny.ie>.

In Writing to:

Tim Butler,
Director of Services,
Kilkenny County Council,
County Hall,
John St.,
Kilkenny



Comhairle Chontae Chill Chainnigh
Kilkenny County Council

