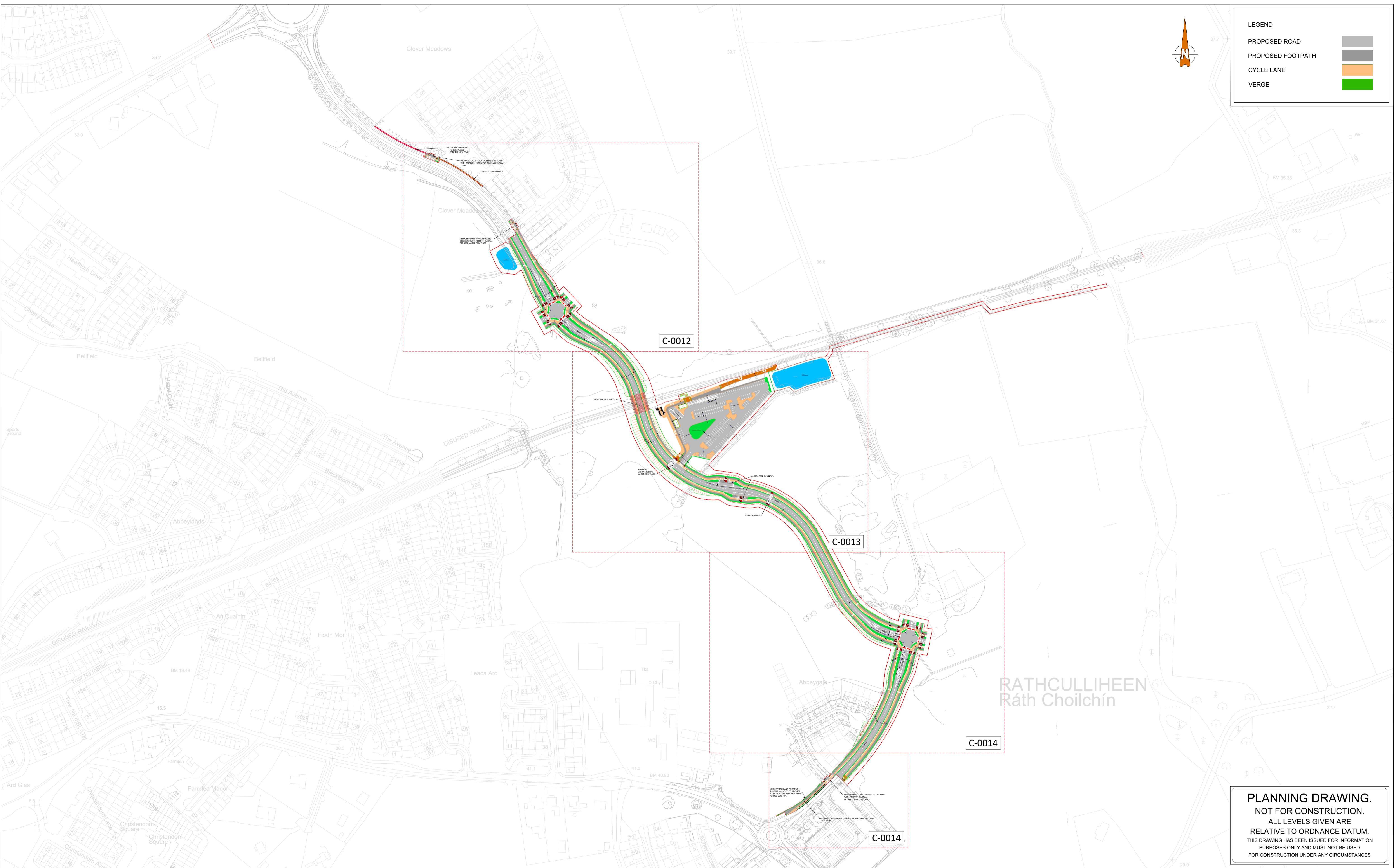


LEGEND	
PROPOSED ROAD	
PROPOSED FOOTPATH	
CYCLE LANE	
VERGE	



PLANNING DRAWING.
 NOT FOR CONSTRUCTION.
 ALL LEVELS GIVEN ARE
 RELATIVE TO ORDNANCE DATUM.
 THIS DRAWING HAS BEEN ISSUED FOR INFORMATION
 PURPOSES ONLY AND MUST NOT BE USED
 FOR CONSTRUCTION UNDER ANY CIRCUMSTANCES

- THIS DRAWING TO BE READ IN CONJUNCTION WITH ALL OTHER RELEVANT DESIGN TEAM DRAWINGS AND SPECIFICATIONS.
- FOR SETTING OUT REFER TO ARCHITECT'S DRAWINGS. DO NOT SCALE THIS DRAWING. USE FIGURED DIMENSIONS ONLY.
- NO PART OF THIS DOCUMENT MAY BE REPRODUCED OR TRANSMITTED IN ANY FORM OR STORED IN ANY RETRIEVAL SYSTEM OF ANY NATURE WITHOUT THE WRITTEN PERMISSION OF O'CONNOR SUTTON CRONIN AS COPYRIGHT HOLDER EXCEPT AS AGREED FOR USE ON THE PROJECT FOR WHICH THE DOCUMENT WAS ORIGINALLY ISSUED.

Rev No.	Date	Revision Note	Drn by	Chkd by
P01	22.04.24	SUITABLE FOR INFORMATION	AD	ZS
P02	31.07.24	SUITABLE FOR INFORMATION	ZS	PR
P03	12.09.24	FOR PLANNING	RM	PR

Rev No.	Date	Revision Note	Drn by	Chkd by



OCSC
 O'CONNOR · SUTTON · CRONIN
 MULTIDISCIPLINARY CONSULTING ENGINEERS
 Civil / Structural / Environmental / Mechanical / Electrical / Sustainability
 Dublin Office: 9 Prussia Street, Dublin 7. D07 KT57.
 Tel: +353 (0)1 8682000 Web: www.ocsc.ie
 Dublin · London · Belfast · Galway · Cork · Birmingham

Client: KILKENNY COUNTY COUNCIL		Project: THE SOUTH-NORTH ACCESS ROAD						
Title: GENERAL ARRANGEMENT LAYOUT OVERALL								
Code	Originator	Zone	Level	Type	Role	Number	Status	Revision
W383	OCSC	XX	XX	DR	C	0011	S4	P03
Date: APR'23		Scale @ A1: 1:2000		Drn by: ZS		Chkd by: PR		Aprvd by: AH