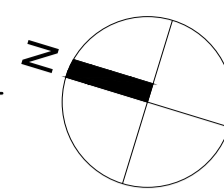


GENERAL NOTES

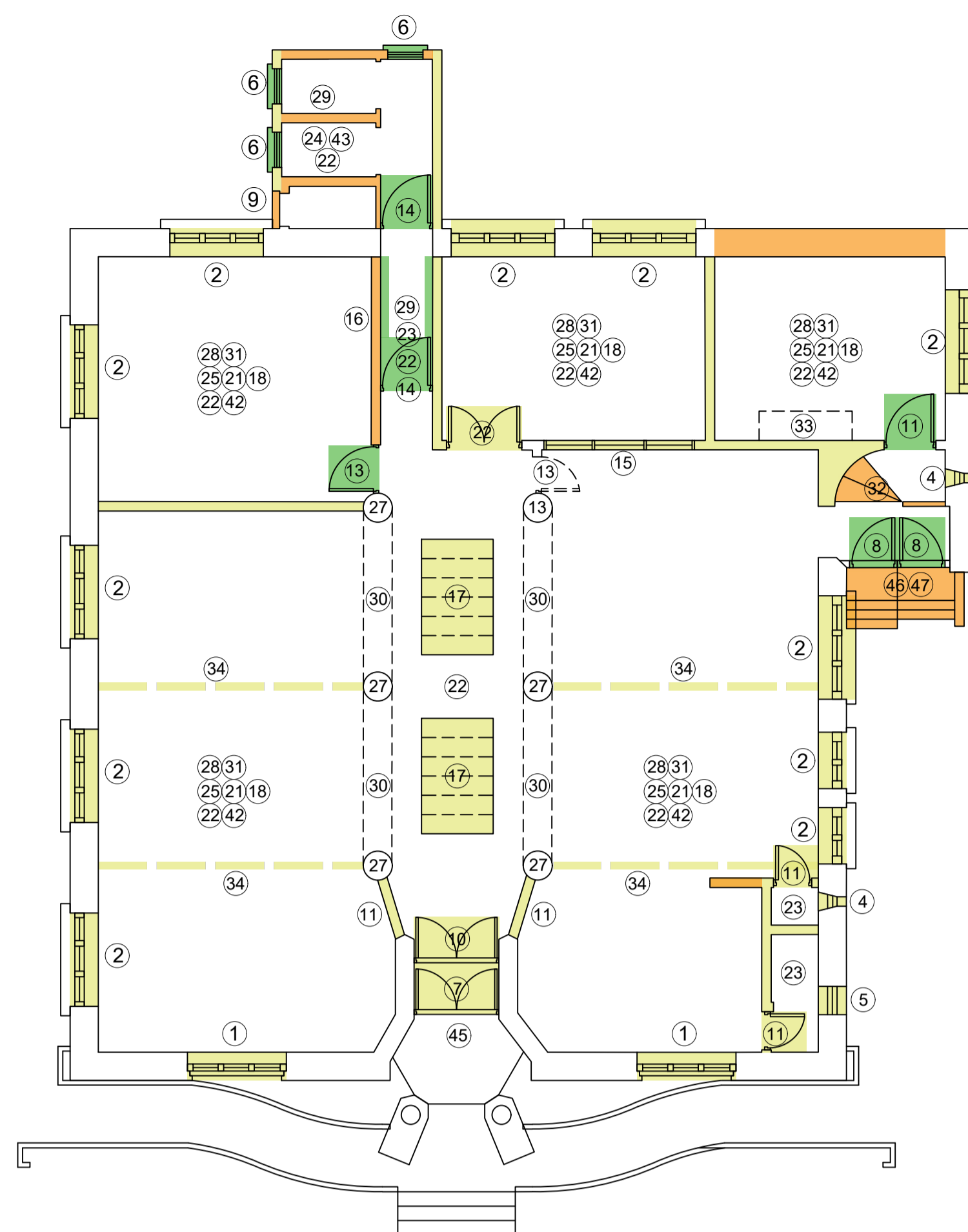
DO NOT SCALE FROM DRAWINGS. WORK TO FIGURED DIMENSIONS ONLY. ARCHITECT TO BE NOTIFIED OF ANY DISCREPANCIES.

THIS DRAWING TO BE READ IN CONJUNCTION WITH ALL ARCHITECT'S DRAWINGS, SPECIFICATIONS CONSULTANT'S DESIGN TEAM DRAWINGS AND SPECIFICATIONS.



LEGEND

- TO BE REUSED
- TO BE RETAINED
- TO BE REMOVED
- TO BE REPLACED



- Existing Drawings
- 01. Joinery Windows – Round-headed tri-partite two-tier small paned single glazed casement timber window and overlight, with astragal-hollow mould; hinged central section opening outward, fixed side sections. Associated window joinery limited to transom, mullion and window board with moulded edge.
 - 02. Joinery Windows – Square-headed tri-partite small paned single-glazed casement timber window and overlight, with astragal-hollow mould; hinged central section opening outward, fixed side sections. Associated window joinery limited to transom, mullion and window board with moulded edge.
 - 03. Joinery Windows – Square-headed bi-partite small paned single-glazed casement timber window and overlight, with astragal-hollow mould; one hinged outward-opening and one fixed section. Associated window joinery limited to transom and window board with moulded edge.
 - 04. Joinery Windows – Square-headed narrow timber casement windows and overlight, with astragal-hollow mould; outward opening currently fixed. Associated window joinery limited to window board with moulded edge and transom.
 - 05. Joinery Windows – Circular bi-partite circular small paned single-glazed casement timber window, with astragal-hollow mould; one hinged outward-opening and one fixed section. Associated window joinery limited to transom.
 - 06. Joinery Windows – Late-20th century square-headed narrow small paned single glazed fixed metal window with top-hung top pane. No associated window joinery.
 - 07. Joinery Doors – External 4-panelled solid timber double door (late-20th century), and historic semi-circular fanlight.
 - 08. Joinery Doors – External single-leaf sheeted timber door, and associated doorcases, with square-headed overlight.
 - 09. Joinery Doors – External sheeted and louvred timber hatch.
 - 10. Joinery Doors – Internal double-leaf timber door with glazed top-half and panelled bottom-half, semi-circular fanlight, and associated doorcase.
 - 11. Joinery Doors – Internal 4-panelled single-leaf timber door, and associated doorcase.
 - 12. Joinery Doors – Internal double-leaf timber door with glazed top-half and panelled bottom-half, and associated doorcase.
 - 13. Joinery Doors – Internal single-leaf timber door with glazed top-half and panelled bottom-half, square-headed small paned overlight; and associated doorcase.
 - 14. Joinery Doors – Internal single-leaf timber door with glazed top-half and panelled bottom-half, and associated doorcase.
 - 15. Joinery Screen – Historic glazed timber screen with a central vertical sliding sash window. Associated joinery includes architrave, transom, mullion and window board.
 - 16. Joinery Screen – Late-20th century high-level timber screen.
 - 17. Joinery Screen – Historic tri-partite laylights with hinged central section.
 - 18. Joinery – Historic skirting, picture rail.
 - 19. Joinery – Original Kilkeny Library Indicator.

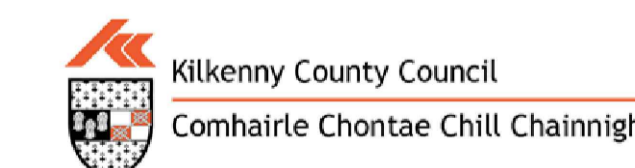
Sheehan & Barry Architects Ltd., t/a Sheehan & Barry Architects.
 Company Reg. No. 525849 VAT No. IE 3038449PH
 Directors: David Sheehan FRIAI, Denis Looey FRIAI, David Averil FRIAI, Ros Cristóir MRIA

**2530 – Kilkeny Carnegie Library
 Conservation Notes**

- 20. Joinery – Historic glazed bookcase.
- 21. Decorative Plasterwork – Running mould, cyma reversa cornice.
- 22. Solid Floor – Late-20th century concrete floor slab throughout with fitted carpet / ceramic tiles.
- 23. Suspended Floor – Suspended timber floor structure with late-twentieth century floor boards.
- 24. Walls – Plaster – Late-20th century painted plastered concrete block masonry walls.
- 25. Walls – Plaster – Painted lime plastered brick masonry walls.
- 26. Walls – Panelling – Late-20th century ceramic tiling.
- 27. Columns – Timber clad steelwork columns with carved capital and base detail.
- 28. Ceilings – Coved lath-and-plaster ceiling.
- 29. Ceilings – Late-20th century suspended plasterboard ceiling.
- 30. Ceilings – Historic steelwork beams.
- 31. Ceilings – Historic exhaust vent.
- 32. Staircase – Existing timber winder stairs, with late-20th century fitted carpet.
- 33. Fireplace – Blocked-up fireplace, extant unknown.
- 34. Roof – Historic strutted Queen post truss.
- 35. Roof – Pitched timber roof with natural slates and red clay ridge tile and/or rolled lead ridge detail.
- 36. Roof – Pitched timber roof with lead cladding and timber framed, single glazed rooflights.
- 37. Roof – Concrete flat roof with asphalt covering.
- 38. Roof – Late-20th century concrete flat roof with asphalt covering.
- 39. Chimney – cement rendered twin-flue chimney stack.
- 40. Cupola – Timber-clad polygonal steel-structure with copper dome, and copper clad base.
- 41. Vent – Pewter vent shaft.
- 42. Walls – Hand-made textured concrete block outer leaf with machine-made brick masonry inner leaf.
- 43. Walls – Late-20th century rendered single-leaf concrete block masonry.
- 44. Stepped threshold – Limestone slabs / flags on in-situ concrete base.
- 45. Stepped threshold – Limestone slabs on cast in-situ concrete steps and string.
- 46. Ramped Access – Early-21st century concrete ramp and steps.
- 47. Metalwork – Historic wrought-iron uprights and flat-bar handrail.
- 48. Metalwork – Early-21st century glazed railing with stainless steel uprights and handrail.
- 49. Metalwork – Original cast-iron rainwater goods.

REV	DATE	DESCRIPTION	ISSUED BY
REVISIONS			

PLANNING - PART 8 APPLICATION



CLIENT:
 KILKENNY COUNTY COUNCIL

PROJECT TITLE:
 CARNEGIE PART 8 APPLICATION

DRAWING TITLE:
 CONSERVATION PLANS

DRN BY:	CHK BY:	SCALE:	DATE:	REVISION:	JOB NO.:
TS	GC	1:100 (A1)	DEC 2024	XX	24014
DRAWING NUMBER:		STATUS CODE:			
KUD-MCORM-AR-00-DR-P4-1006		P4			

MCORM ARCHITECTURE AND URBAN DESIGN

No.1 Grantham Street, Dublin 8
 D08 A49Y Tel: +353 (0)1 478 8700

Block 6, Central Business Park
 Tullamore, County Offaly, R35 F6F8
 Tel: +353 (0)7 532 3667
 E: arch@mcorm.com W: mcorm.com

Figured dimensions only to be used. This drawing is copyright of MCORM Ltd. All information is shared as per approved use in accordance with I.S. EN 2021 to I.S. EN ISO 19550-2: 2018. If Status Code above is empty, this information has been shared as Status Code S0 - Work in Progress (WIP) / Draft.

