

# Graiguenamanagh–Tinnahinch Flood Relief Scheme

## Background, Timeline and Public Consultation Process

### INTRODUCTION

The OPW, working in partnership with Kilkenny County Council and other Local Authorities, commissioned and completed the South-Eastern Catchment Flood Risk Assessment and Management (CFRAM) Study in 2018. The South-Eastern CFRAM identified and mapped existing and potential future flood risks. The South-Eastern CFRAM Study Area concluded that in Graiguenamanagh/Tinnahinch a flood relief scheme would be viable and effective for the community.

To assess and develop a suitable flood relief scheme for Graiguenamanagh-Tinnahinch, Ayesa have been appointed by Kilkenny County Council (KCC) to provide engineering and environmental consultancy services for the Graiguenamanagh-Tinnahinch Flood Relief Scheme (GTFRS). OPW is funding the project.

### DESIGN STANDARD

The design Standard of Protection (SoP) sought for the Graiguenamanagh-Tinnahinch Flood Relief Scheme (GTFRS) is the 1% annual exceedance probability (AEP) event. This can be thought of as a flood with a magnitude such that it has a 1% chance of occurring in any given year and is sometimes referred to as the 100-year flood.

The scheme has also been assessed for resistance/adaption to climate change for flood events that are greater than the design flood event.

### OPTIONS SELECTION

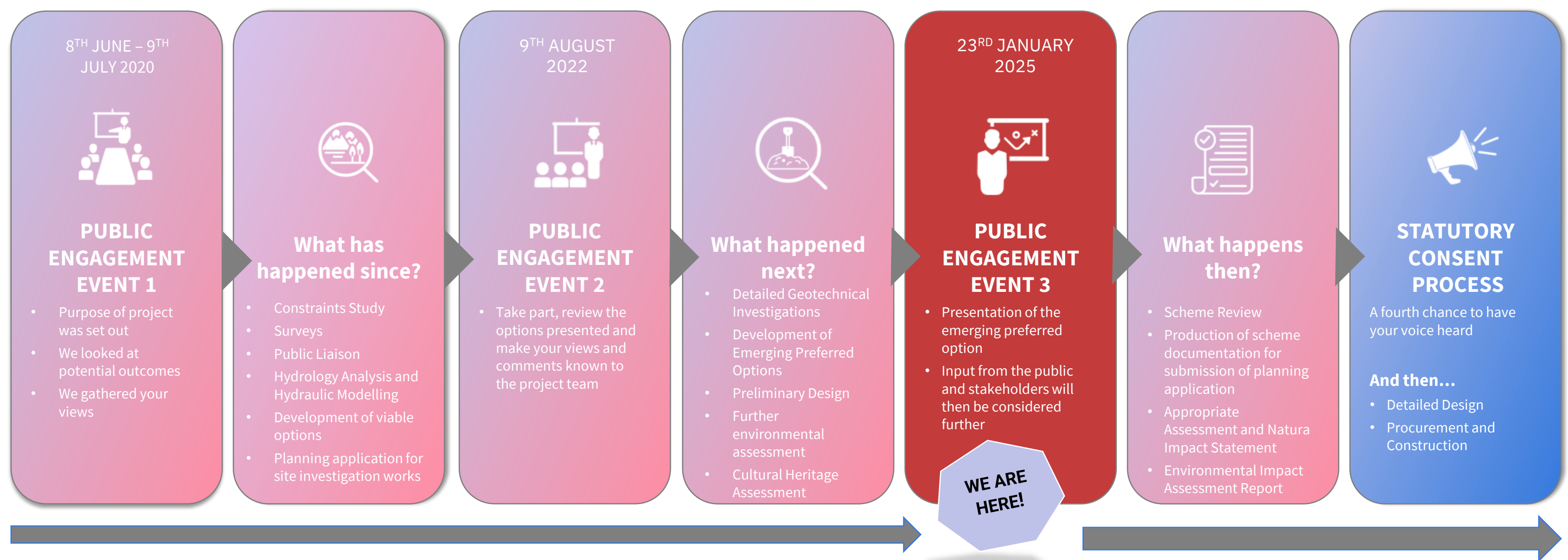
Options presented at the last Public Consultation were assessed based on the public feedback and under the following criteria:

- Technical
- Economic
- Social
- Environmental

The emerging preferred option, which is being prepared for statutory approval, is OPTION 3 – Raised Defences and River Duiske Storage. The following posters present the detail of this preferred option.

### STAGES & TIMELINES

The diagram below outlined the steps in Stages 1-2 that lead up to the statutory approval for the scheme. Once this is obtained, the detailed design will begin, and a construction contractor will then be procured to build the scheme. The timeline for the entire project is shown inset below.



	2024	2025	2026	2027	2028	2029	2030	2031
Stage 1 Options Assessment, Scheme Development and Design	█	█						
Stage 2 Planning/Development Consent Process		█	█	█				
Stage 3 Detailed Construction Design and Tender				█	█			
Stage 4 Construction Supervision					█	█	█	
Stage 5 Handover of Works							█	█

