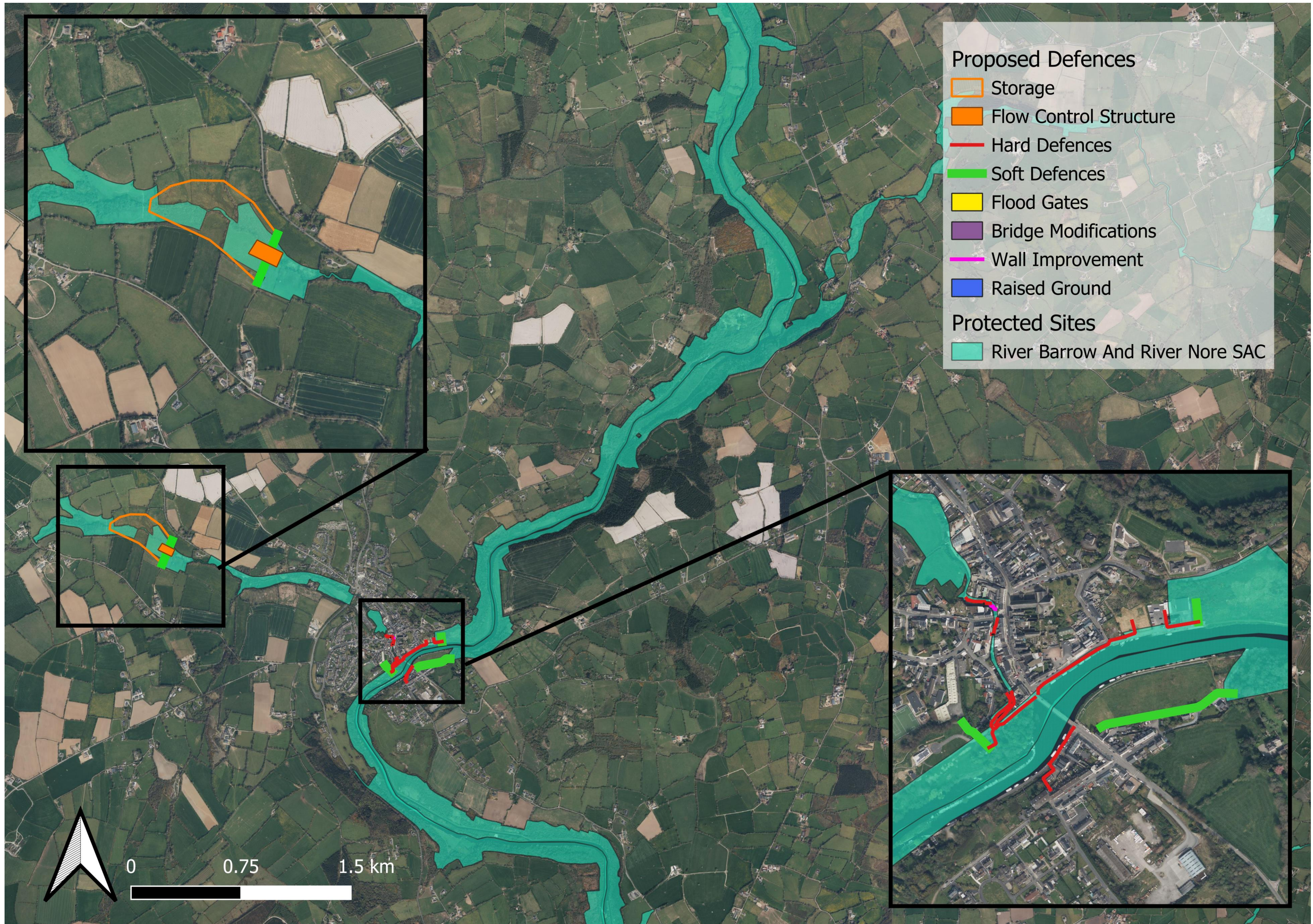


## Environment - Biodiversity

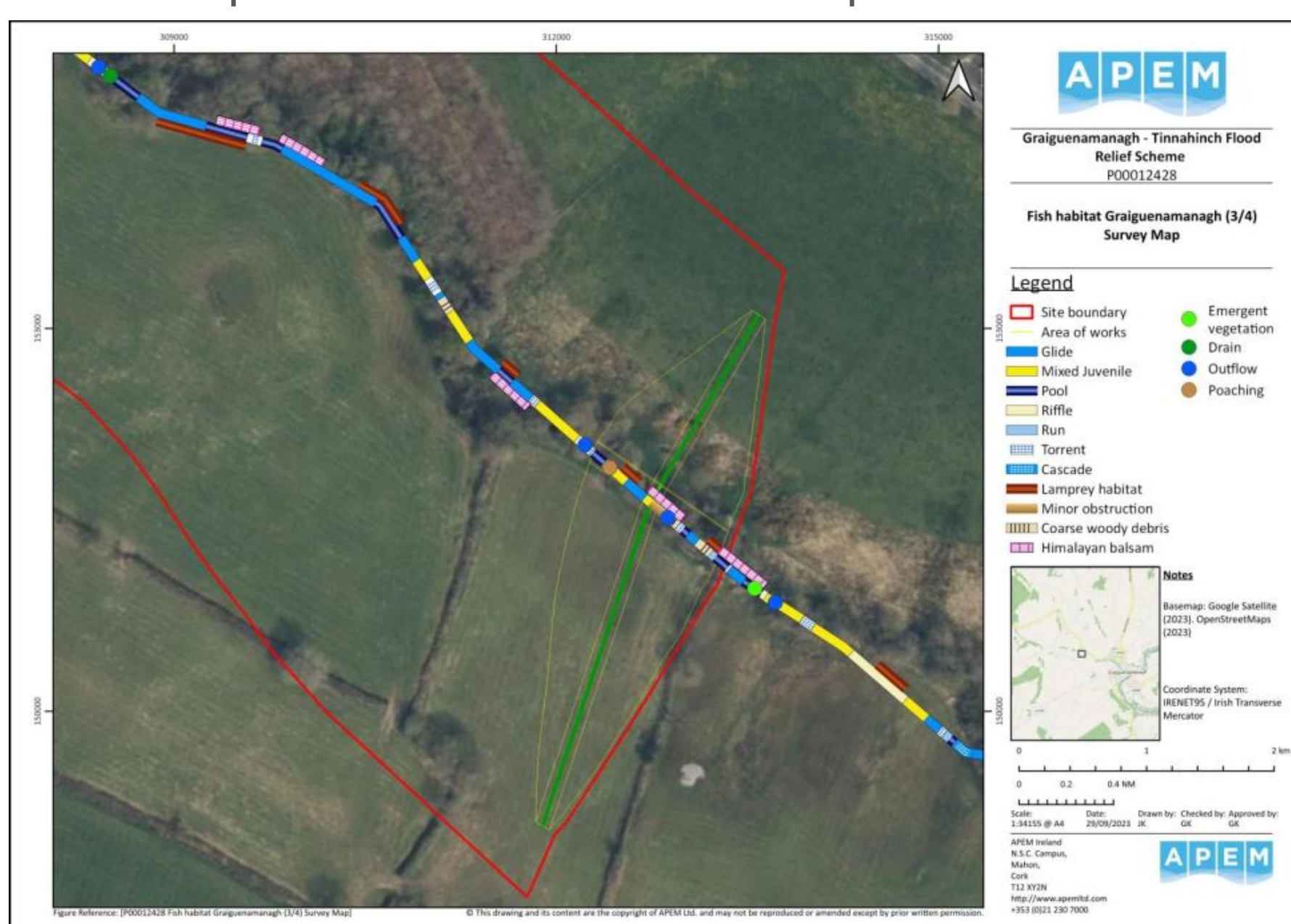
The River Barrow and River Nore Special Area of Conservation (SAC) encompasses the River Barrow and the River Duiske offering the most significant ecological constraint as works will take place within this SAC. The figure below shows this SAC in relation to the proposed flood defences. A Screening for Appropriate Assessment and Natura Impact Statement (NIS) is being completed in accordance with Irish legislation to determine the extent of the impact of the proposed scheme on the River Barrow and River Nore SAC. The NIS will include recommendations to minimise and mitigate any potential impacts and ideally result in a new positive contribution to biodiversity.



The river corridors (including the rivers themselves) potentially support numerous protected species including two species of lamprey, salmon, sea and brown trout, otter, bats, badger, and potentially red squirrel, pine marten, white-clawed crayfish and the common frog. Survey work has taken place to determine the presence of species including aquatic, mammal and bat species. Evidence of otters, badgers, birds and bats were found during the surveys. The rivers contain suitable habitats for many salmonid species. The map below shows an example of river habitats in the upstream area.



Mitigation measures are being proposed to limit the impacts to habitats and species. With the implementation of mitigation measures, long-term impacts are anticipated to be minor. The full impact of the options are being assessed as part of an Appropriate Assessment and Environmental Impacts Assessment.



Arboreal surveys have been undertaken to assess impacts to trees within the scheme area. Impacts to trees have a knock-on effect on the species that use them such as bats and birds. The list of trees to be removed are seen below. The majority of trees that will be removed as part of the scheme are low value trees (Category 'C' and 'U').

Category Grade	No. of Trees
<b>Category U</b>	<b>Tree Nos. 1241, 1242, 1253, 7519, 1797</b>
5 Trees	Tree Line No. 11, 12
2 Tree Lines	
<b>Category A</b>	<b>Tree Nos. 1251, 1252, 7531</b>
3 Trees	
<b>Category B</b>	<b>Tree Nos. 7518, 7532, 7534, 7535, T5, 7543, 1796, 1797</b>
8 Trees	
<b>Category C</b>	<b>Tree Nos. 7516, 7533, 1244, 1245, 1246, 1247, 1248, 7541, 7542, T6</b>
10 Trees	Tree Group No. 7517
1 Tree Groups	Hedge Nos. 1C, 1D, 11, 12
4 Hedges	Tree Line Nos. 4, 5
2 Tree Lines	
<b>Total = 26 Trees, 1 Tree Groups, 4 Hedges, 4 Tree Lines</b>	