



BRENDAN MOORE
ARCHITECTURE + DESIGN

Planning – Project Management – Fire Safety

Carricketna, Kilmoganny, Co. Kilkenny t 087 4120718
53 The Fairways, New Orchard Road, Kilkenny t 051 648385
E-mail: moore.brendanl@gmail.com

SITE SUITABILITY REPORT

Site at,

**Graigueswood,
Freshford,
Co. Kilkenny**

on behalf

of

Kilkenny County Council

CONTENTS:

DESK STUDY

PHOTOGRAPHS OF TRIAL HOLE AND TEST AREA

APPENDICES

DISCOVERY SERIES MAP EXTRACT.

1/50,000

AERIAL PHOTOGRAPHY

Fig. 1 GROUNDWATER WELL DATA

Fig. 2 KARST FEATURES

Fig. 3 BEDROCK – AQUIFER MAP

Fig. 4 SOURCE PROTECTION AREA

Fig. 5 INTERIM VULNERABILITY MAP

GROUND WATER STATUS

Fig. 6 EPA SOILS MAP

EPA SUBSOILS MAP

Fig. 7 TEAGASC SUBSOILS DATA

Fig. 8 GENERALISED BEDROCK MAP

Fig. 9 GROUNDWATER RECHARGE

Fig. 10 SIGNIFICANT SITES

PHOTOGRAPHS OF TRIAL HOLE AND TEST AREA



Test Area



Trial Hole Depth (2.1m)



Trial Hole after 48 hours



Trial Hole after 48 hours



T1 Test hole @ 400mm



T2 Test hole @ 300mm



T2 Test hole @ 400mm



T2 Test hole @ 300mm



T3 Test hole @ 400mm



T3 Test hole @ 300mm



P1 Test hole @ 400mm



P1 Test hole @ 300mm



P1 Test hole @ 200mm



P2 Test hole @ 400mm



P2 Test hole @ 300mm



P2 Test hole @ 200mm



P3 Test hole @ 400mm



P3 Test hole @ 300mm



P3 Test hole @ 200mm

AERIAL PHOTOGRAPHS

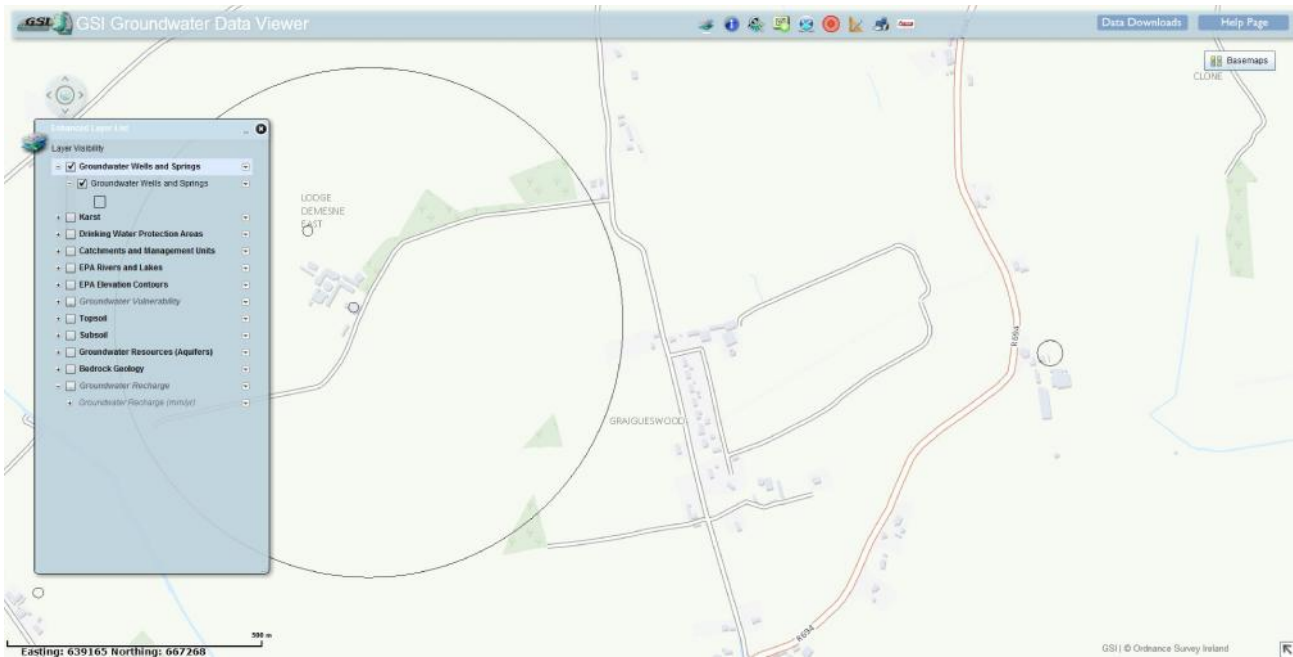


Aerial Photography



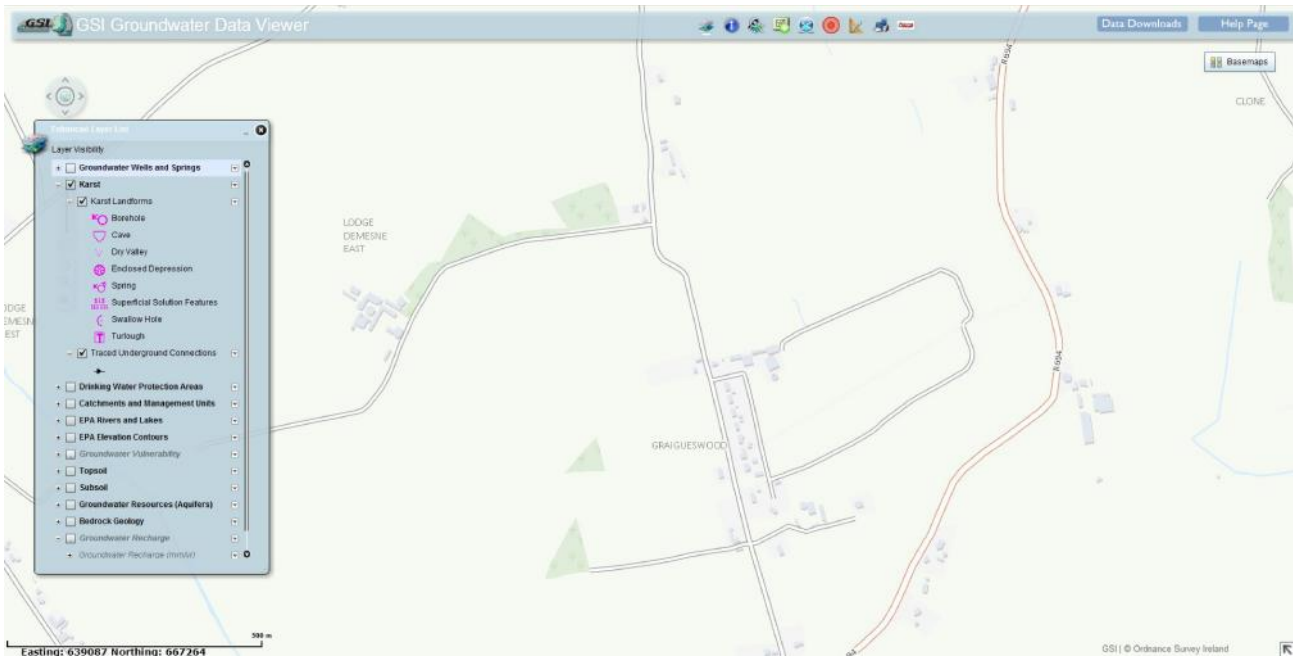
Aerial Photography

Appendix Fig. 1 Groundwater Well Data



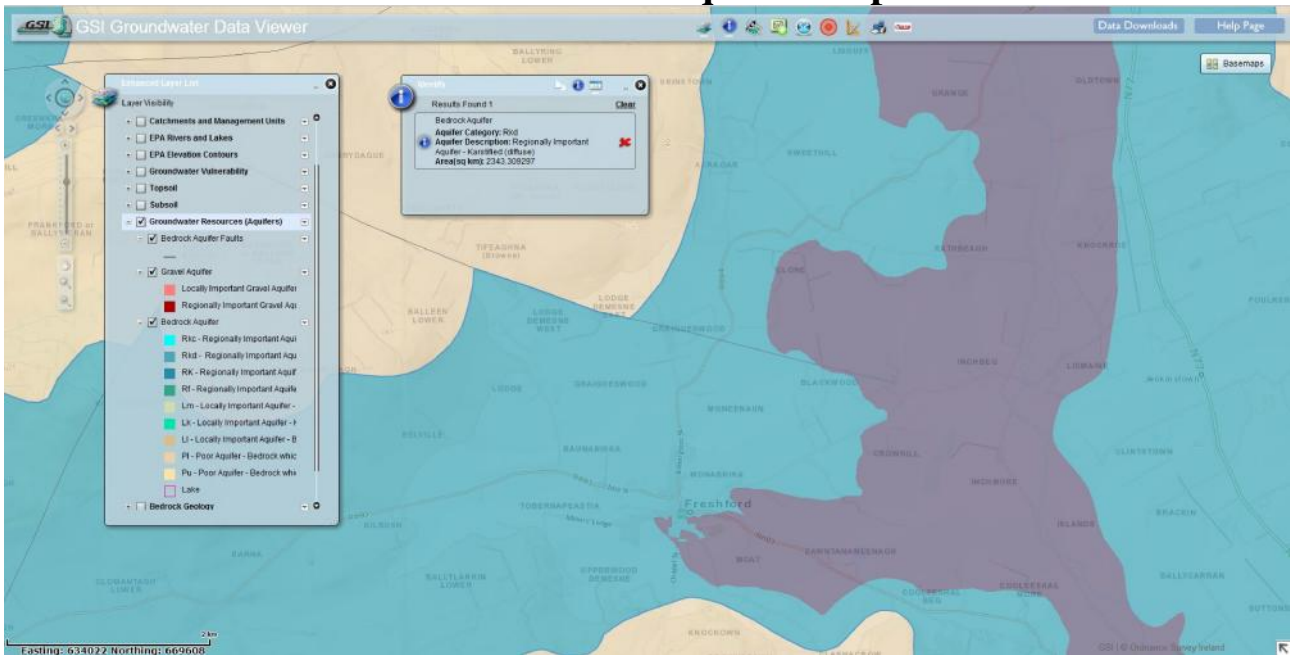
There is no wells recorded in the immediate vicinity of the proposed site.

Appendix Fig. 2 Karst Features



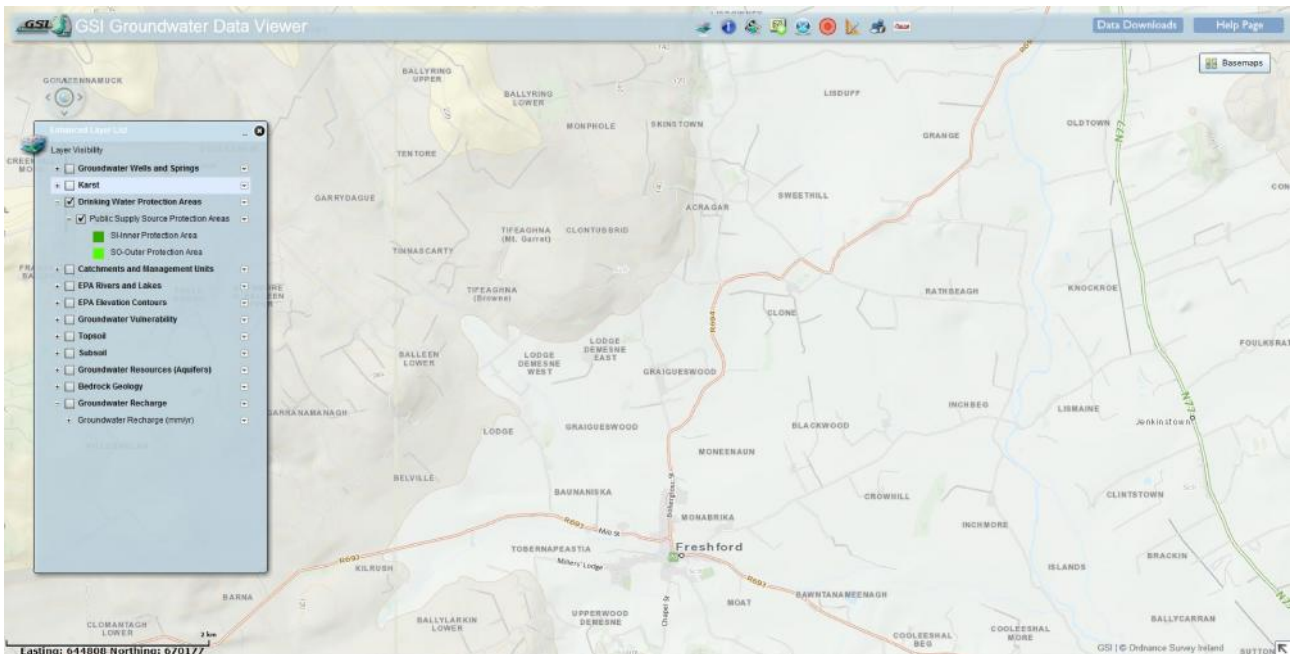
There are no karst features in the immediate vicinity of the proposed site.

Appendix Fig. 3 Bedrock – Aquifer Map



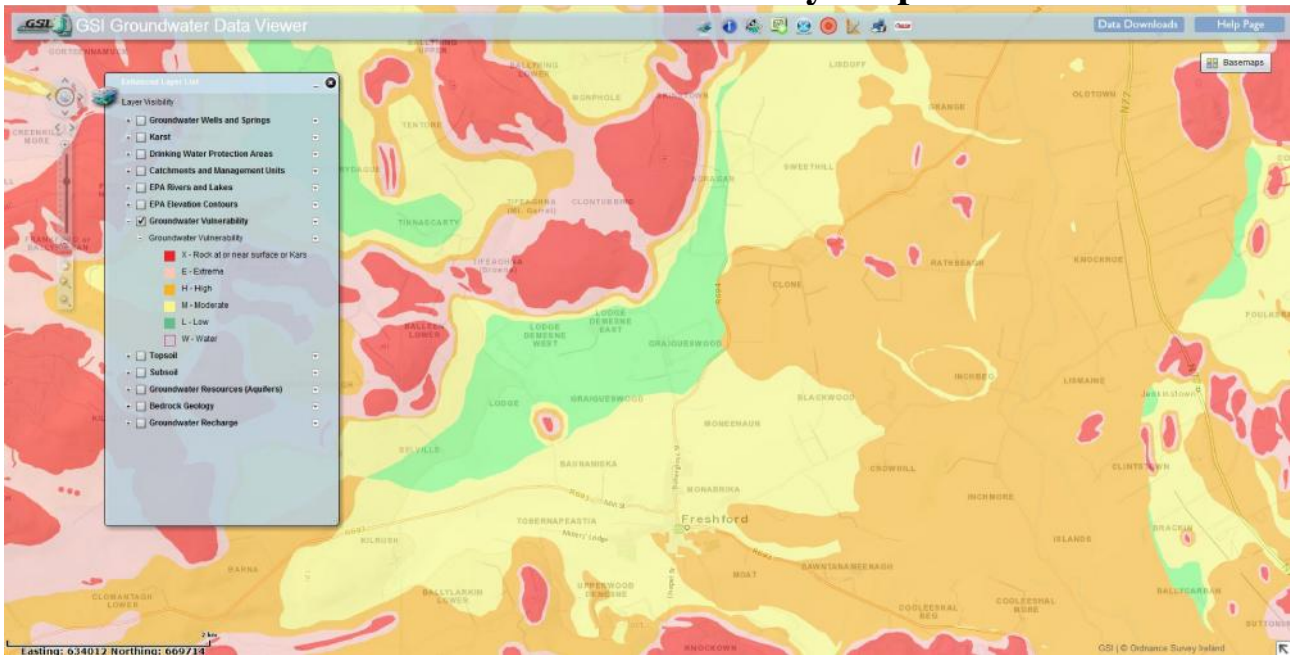
The Bedrock-Aquifer Map classifies the location of the percolation test as *Rkd*– *Regionally Important Aquifer – Karstified (diffuse)*

Appendix Fig. 4 Source Protection Zones



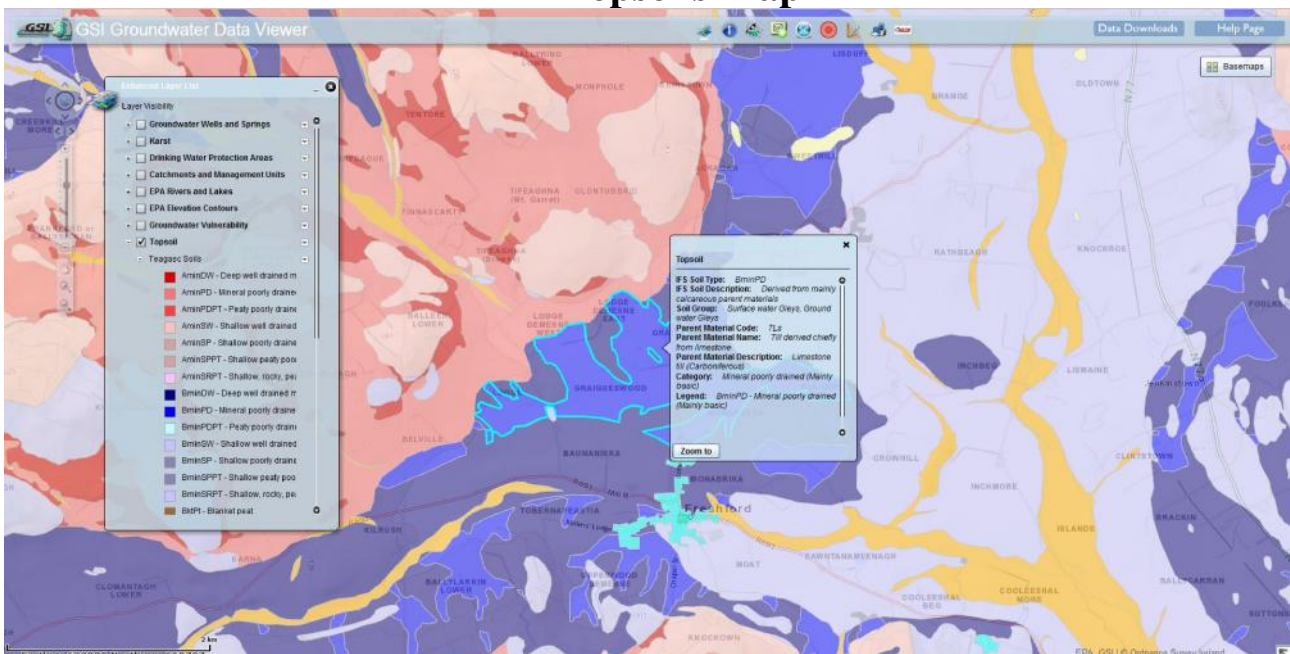
Not applicable.

Appendix Fig. 5 Interim Vulnerability Map



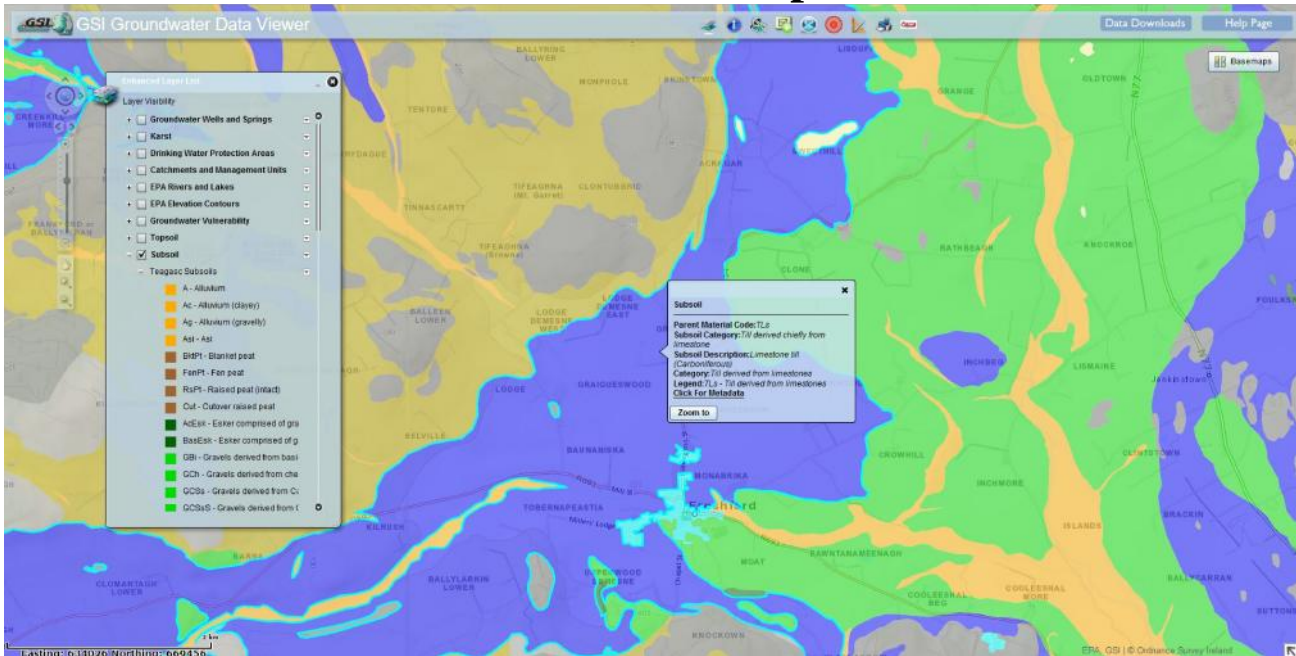
The Interim Vulnerability Map classifies the location of the percolation test as having a vulnerability of: *L-Low*

Appendix Fig. 6 Topsoils Map



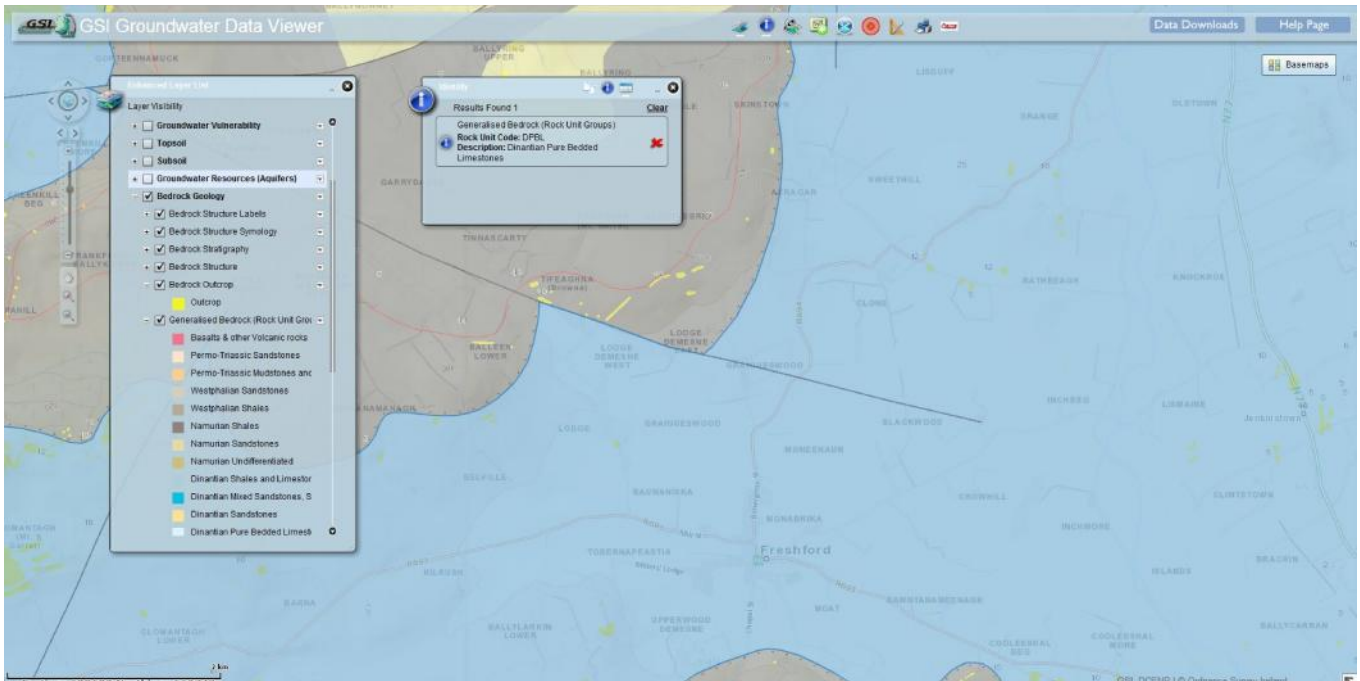
The Topsoil Map gives a soil classification at the location of the percolation test as: **BminPD – Mineral poorly drained (Mainly basic)**

Appendix Fig. 7 Subsoils Map



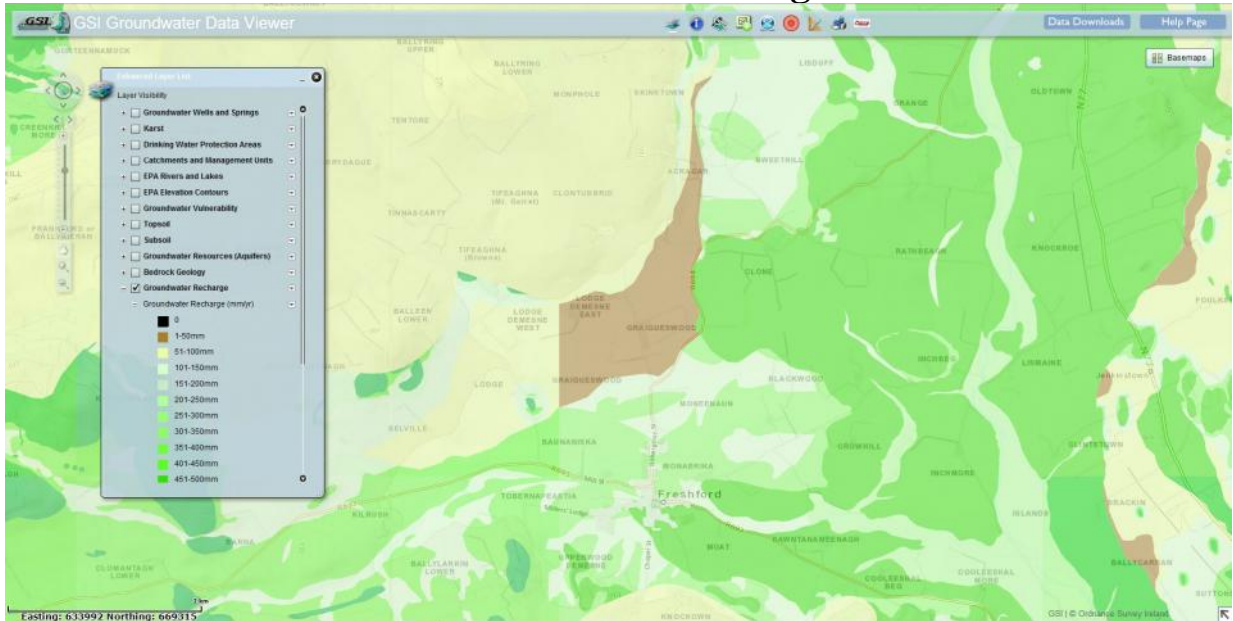
The Subsoil Map gives a soil classification at the location of the percolation test as: TLs – Till derived chiefly from limestone

Appendix Fig. 8 Generalised Bedrock MAP



The Generalised bedrock map indicates the occurrence of DPBL – Dinantian Pure Bedded Limestones

Appendix Fig. 9 Groundwater Recharge



Appendix Fig.10 Significant Sites

