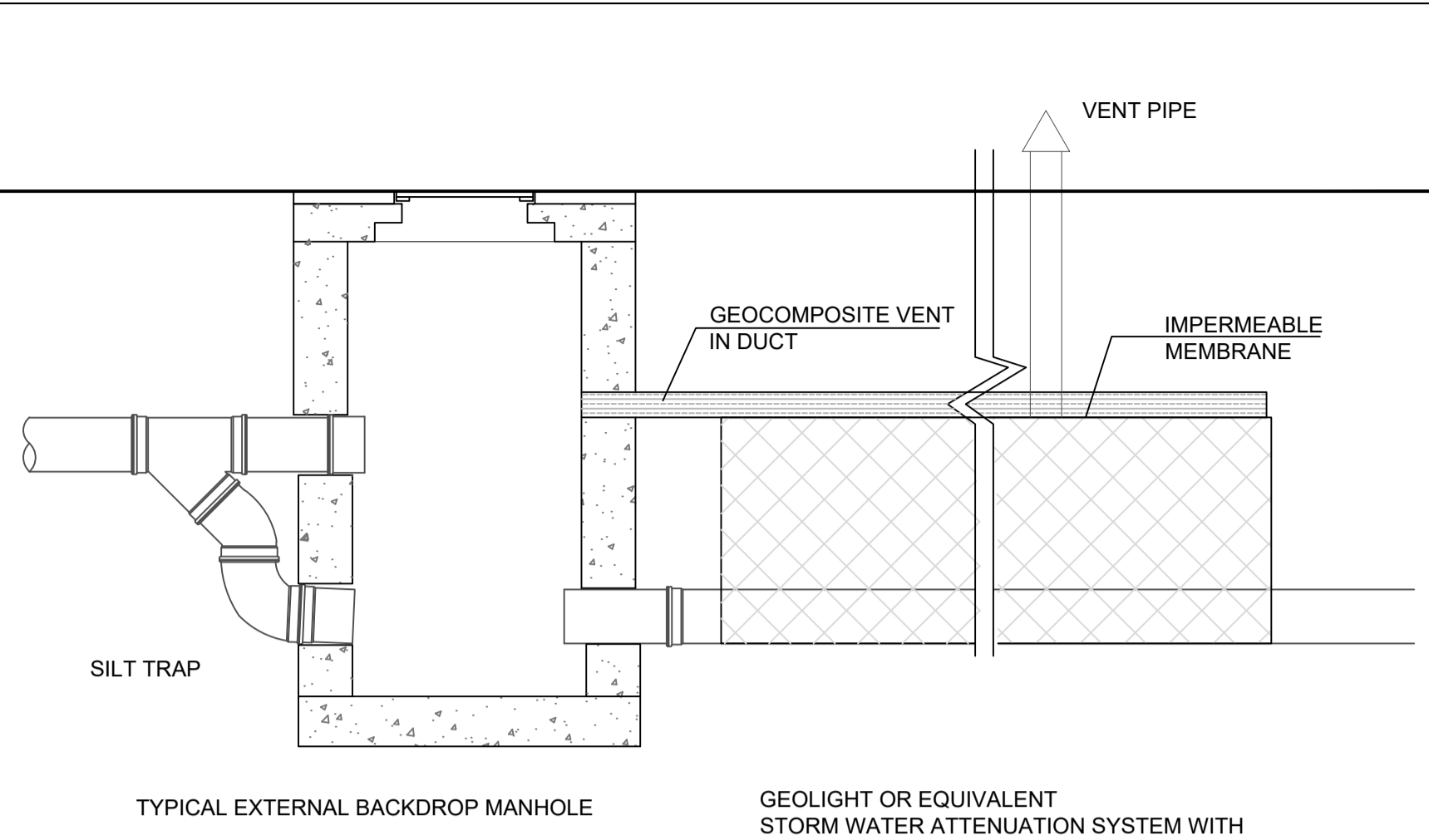


TYPICAL INTERCEPTOR TRAP, 3500 LITRE CAPACITY

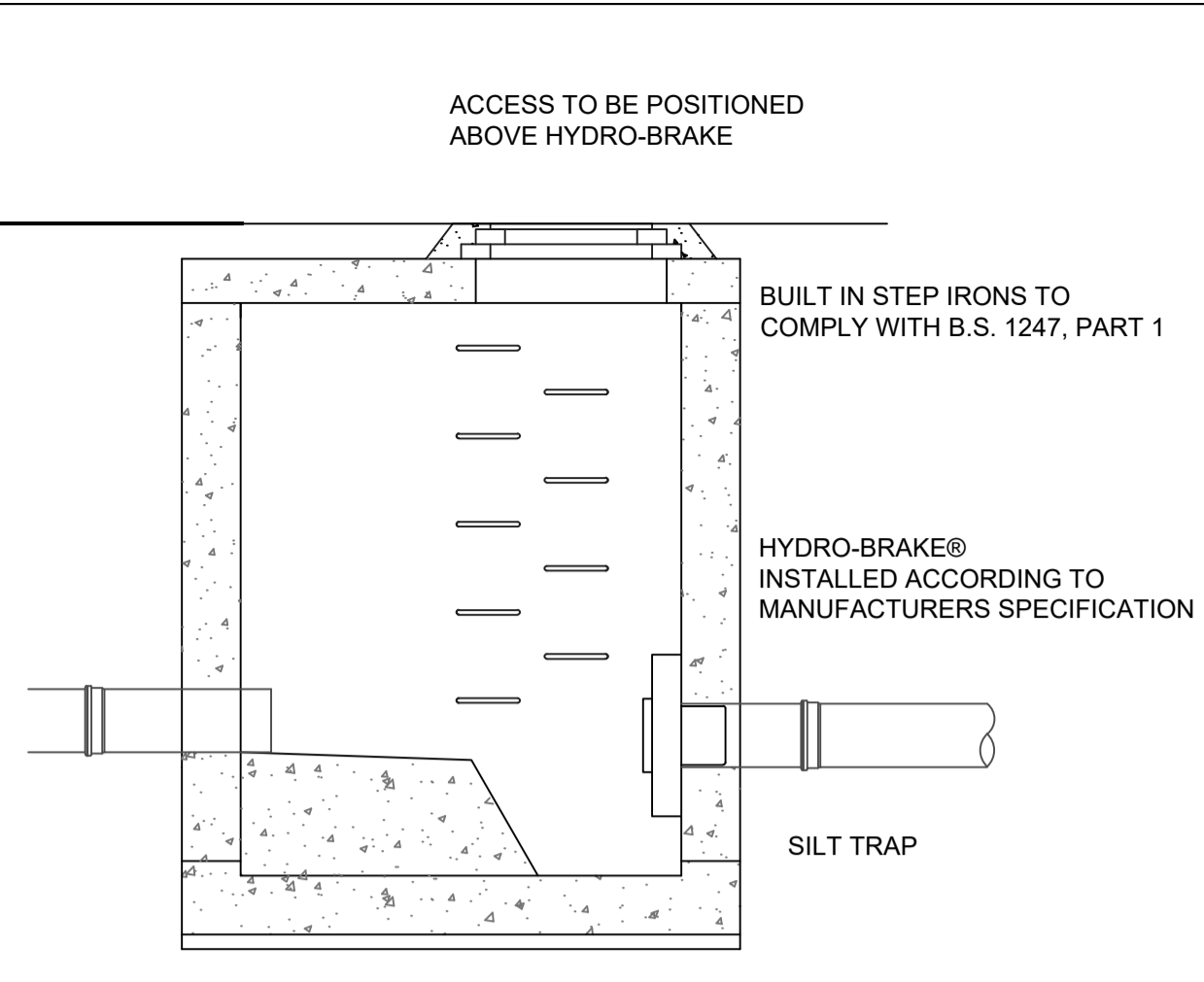
**HYDROCARBON INTERCEPTOR DETAIL**  
SCALE 1:20



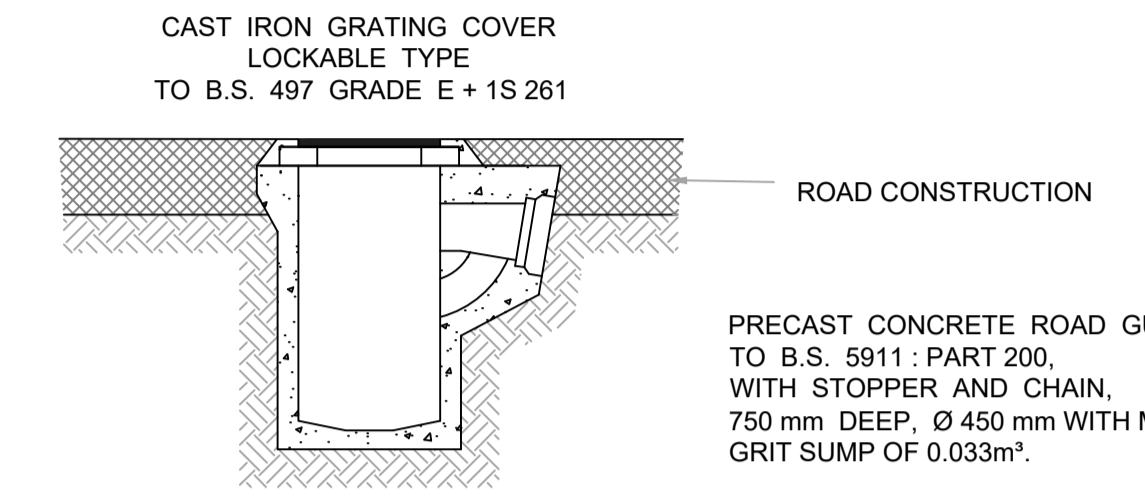
TYPICAL EXTERNAL BACKDROP MANHOLE

GEOLIGHT OR EQUIVALENT STORM WATER ATTENUATION SYSTEM WITH VOLUME AS PER DRAINAGE LAYOUT INSTALLED TO MANUFACTURERS INSTRUCTIONS

**ATTENUATION DETAIL**  
SCALE 1:20



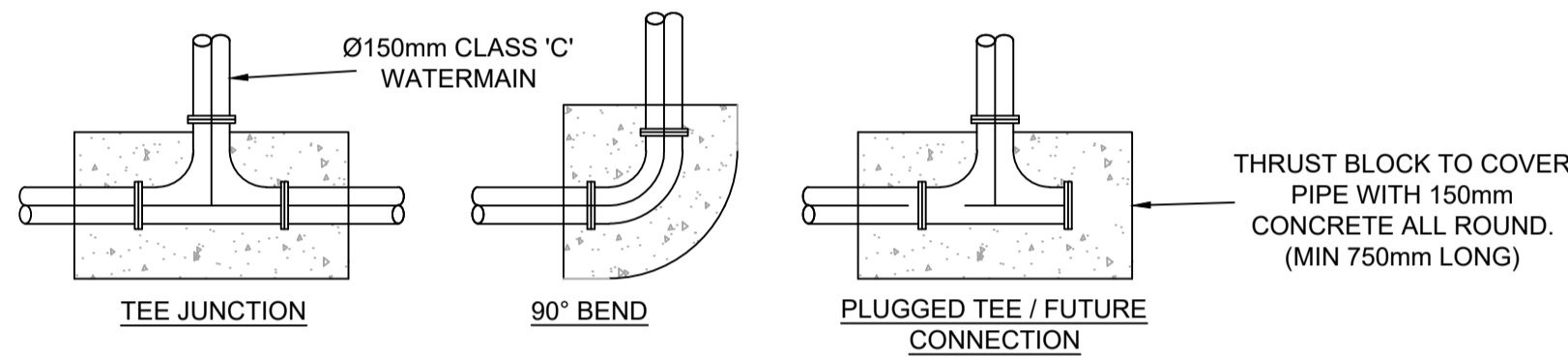
MANHOLE WITH SILT TRAP AND HYDRO-BRAKE, MAXIMUM OUTFLOW IN ACCORDANCE WITH SITE DRAINAGE DESIGN



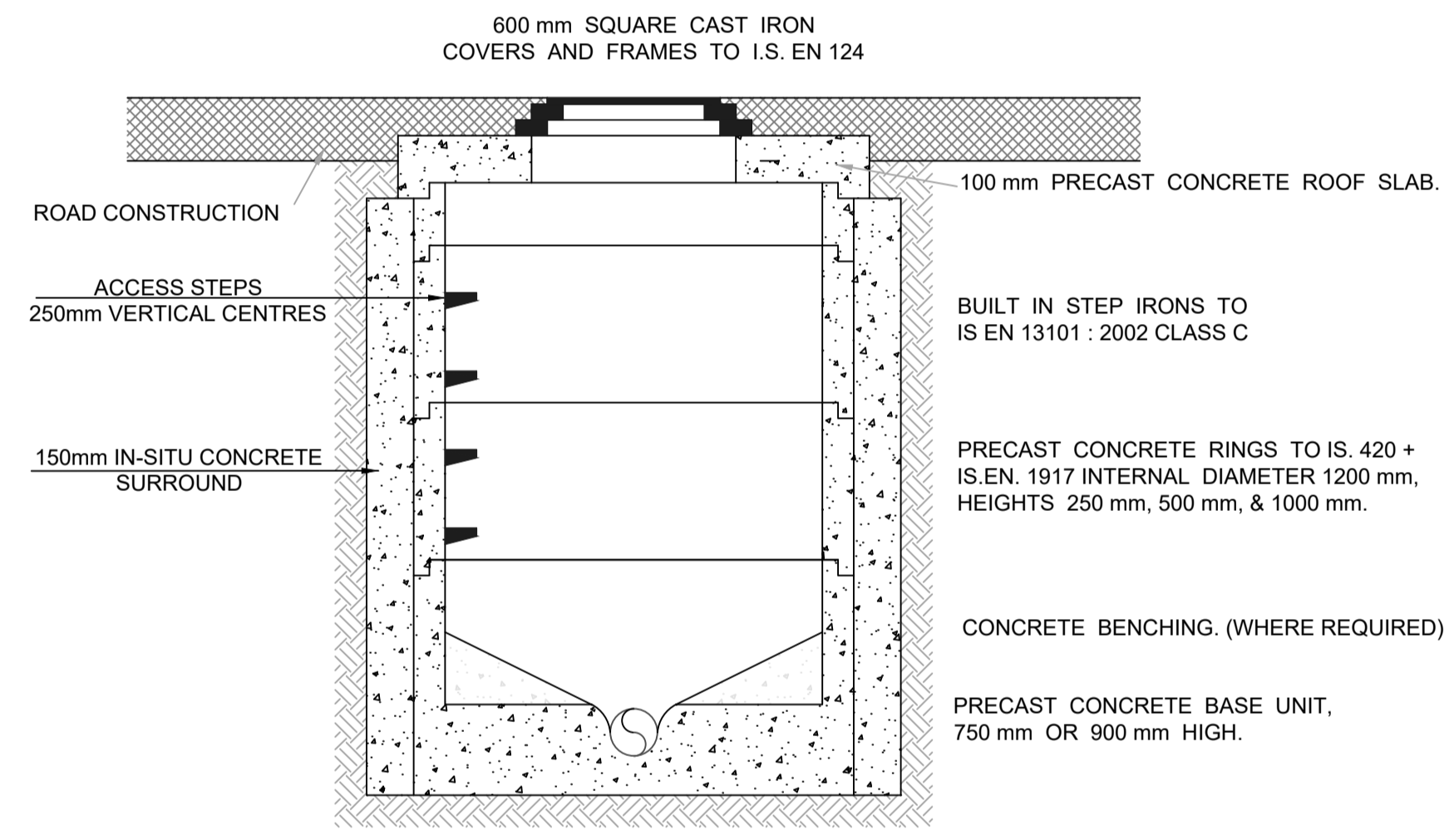
TYPICAL PRECAST ROAD GULLY DETAIL SCALE 1:20

**General Notes :**  
 1. No part of this document may be re-produced or transmitted in any form or stored in any retrieval system without the written permission of the Consulting Engineer, David Kelly Partnership, as copyright holder except as agreed for use on the project for which the document was originally issued.  
 2. The contractor is responsible for checking all levels and dimensions on site and shall refer all discrepancies to the Engineer.  
 3. Only drawings issued for CONSTRUCTION shall be used for construction purposes.  
 4. Work to figured dimensions only. Do not scale print.  
 5. Check size of drawing sheet against dimension marks at bottom left hand corner of sheet.

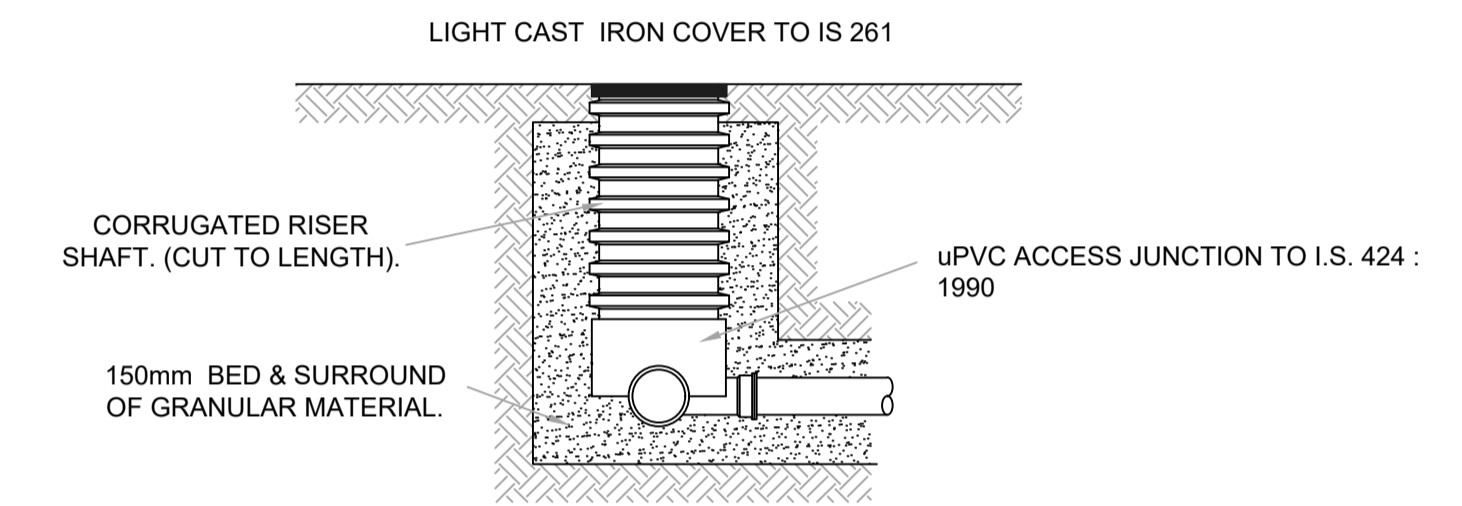
PRECAST CONCRETE ROAD GULLY TO B.S. 5911 : PART 200, WITH STOPPER AND CHAIN, 750 mm DEEP, Ø 450 mm WITH MIN. GRIT SUMP OF 0.033m<sup>3</sup>.



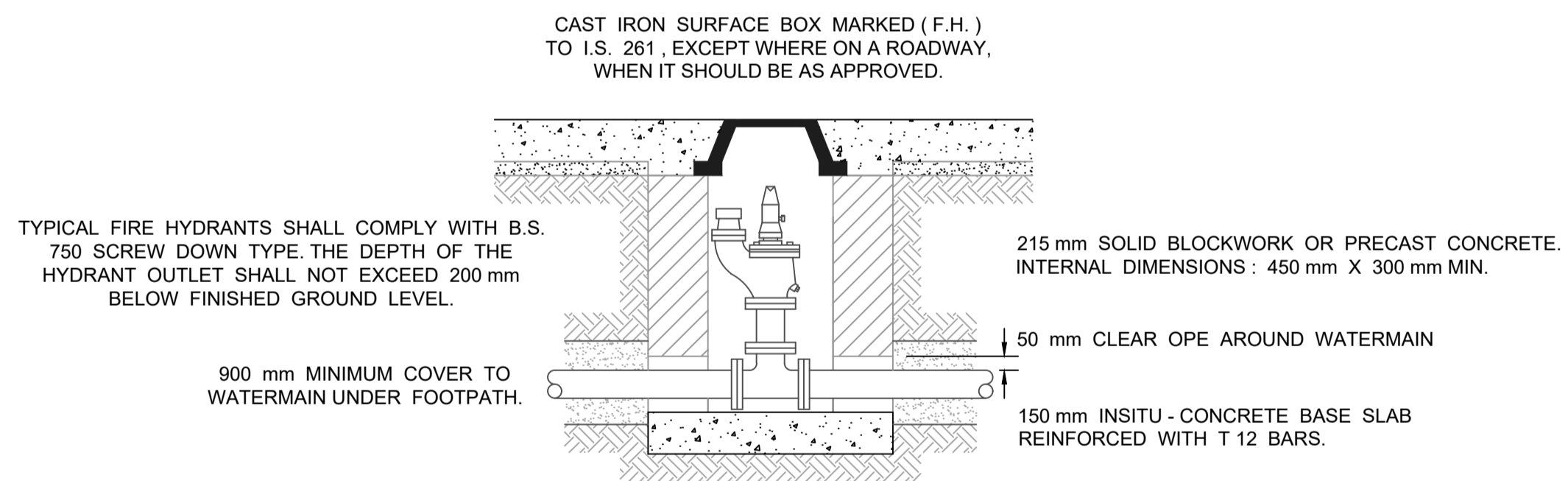
TYPICAL THRUST BLOCK DETAILS SCALE 1:20



PRECAST CONCRETE MANHOLE DETAIL SCALE 1:20

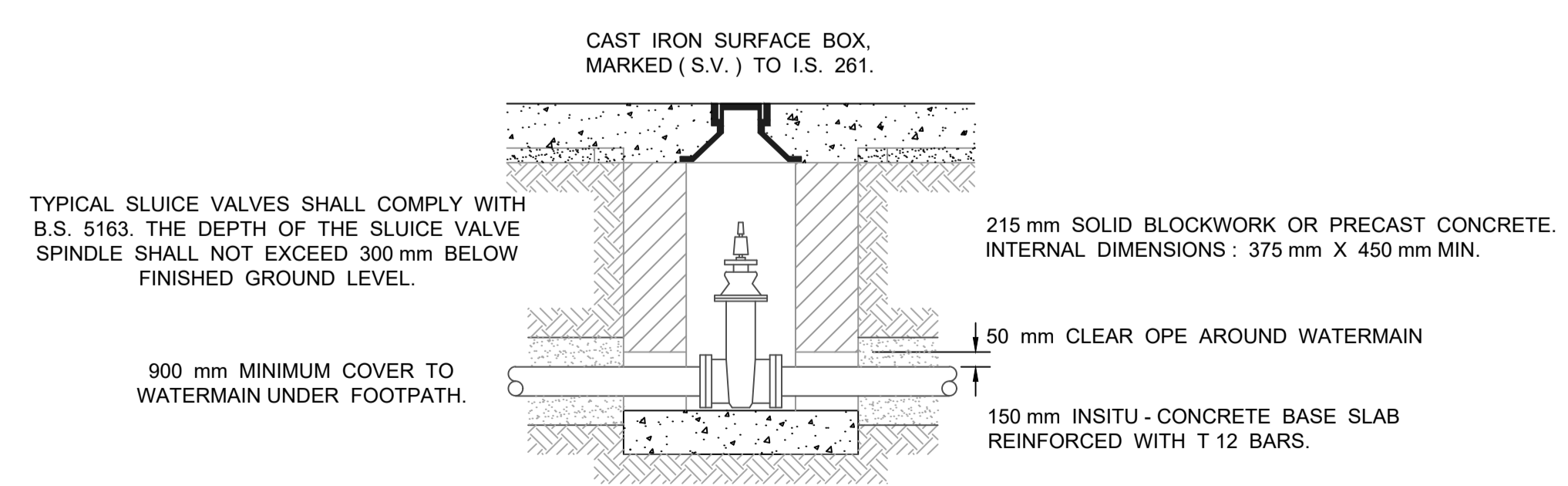


TYPICAL ACCESS JUNCTION DETAIL SCALE 1:20

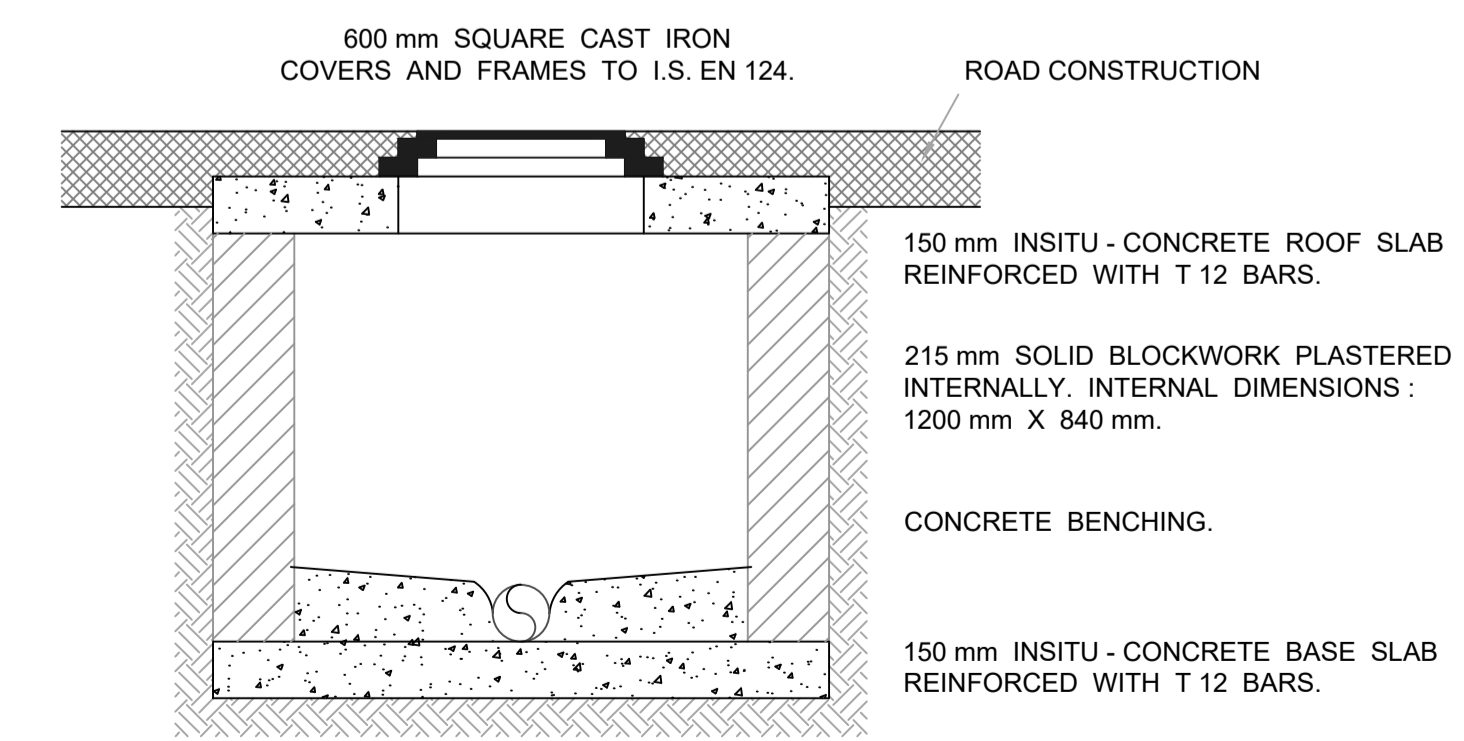


TYPICAL FIRE HYDRANT DETAIL SCALE 1:20

**NOTE:**  
 ALL WORKS TO BE TO IRISH WATER SPECIFICATION AND STANDARD DETAILS AND AGREED IN ADVANCE OF WORKS



TYPICAL SLUICE VALVE DETAIL SCALE 1:20



TYPICAL BLOCKWORK MANHOLE DETAIL SCALE 1:20

Rev :	Note :	Date :	Drawn :	Approved :
P1		08 DEC. '17	ROS	DO'S

**DAVIDKELLY PARTNERSHIP**  
 CHARTERED ENGINEERS

Nelson House, Emmet Place, Youghal, Co. Cork. t. +353 (0)24 92412 e. info@dkp.ie www.dkp.ie

10 Ormonde Street, Kilkenny. t. +353 (0)56 7801260

Project :  
 PROPOSED RESIDENTIAL DEVELOPMENT AT PILTOWN, CO.KILKENNY FOR KILKENNY COUNTY COUNCIL

Title :  
**DRAINAGE DETAILS**

Purpose of Issue :	Scale :	
PLANNING	AS SHOWN	
Project No. :	Drawing No. :	Issue No. :
16765	104	P1