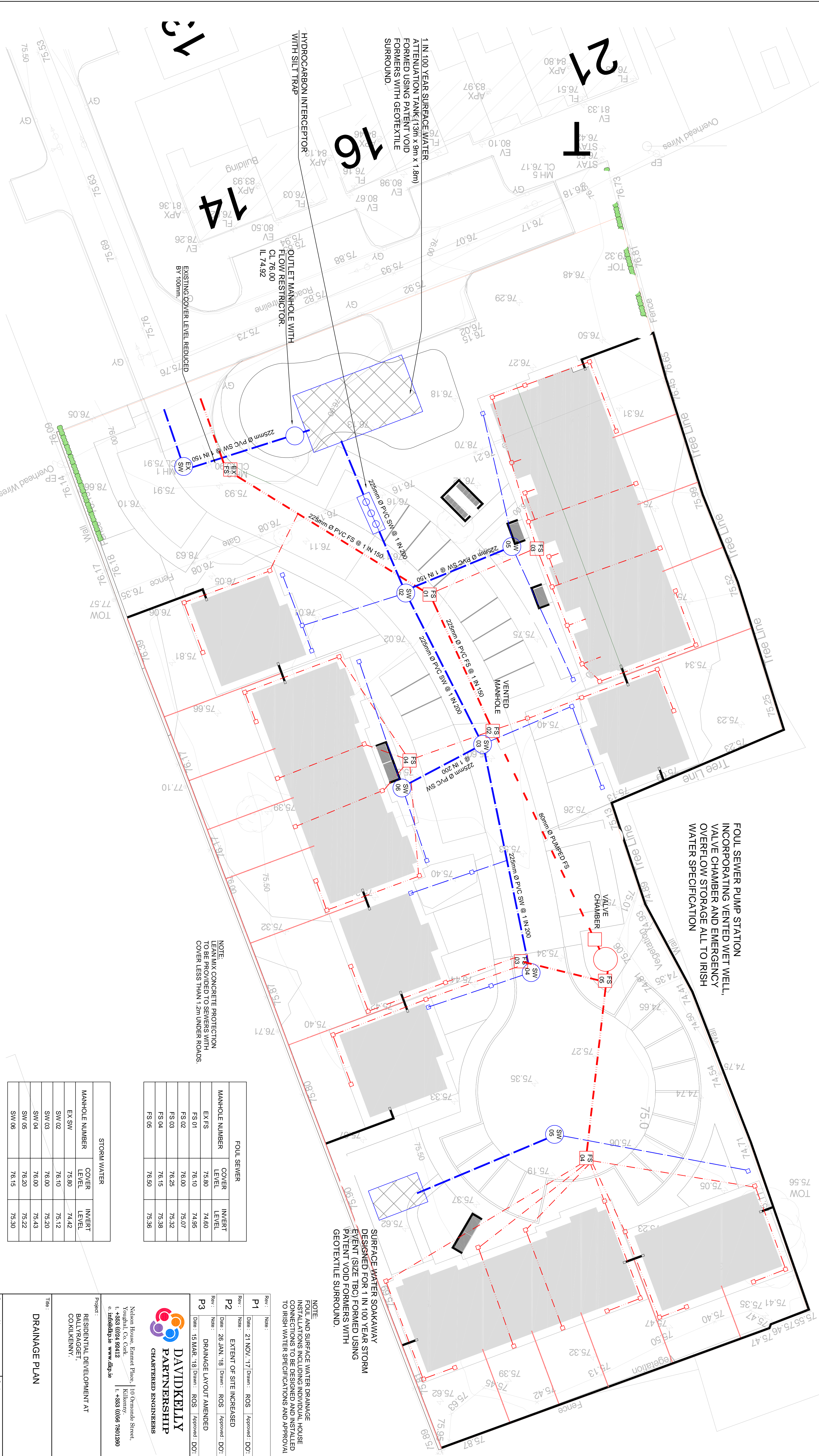
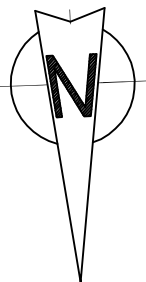


View

- General Notes :
- No part of this document may be reproduced or transmitted in any form or by any means electronic or mechanical, including photocopying, recording, or by any information storage and retrieval system, without permission in writing from the Consulting Engineer, David Kelly Partnerships, as copyright holder, except as agreed for use on the project for which the document was originally issued.
  - The contractor is responsible for checking all levels and dimensions on site and for ensuring that the works are carried out in accordance with the specification and the approved drawings.
  - Only drawings issued for CONSTRUCTION shall be used for construction purposes.
  - Only the signed dimensions only. Do not scale print.
  - Do not scale print. All dimensions shall be taken from the bottom left hand corner of sheet.



NOTE:  
LEAN MIX CONCRETE PROTECTION  
TO BE PROVIDED TO SEWERS WITH  
COVER LESS THAN 1.2m UNDER ROADS.

NOTE:  
FOLL AND SURFACE WATER DRAINAGE  
INSTALLATIONS INCLUDING INDIVIDUAL HOUSE  
CONNECTIONS TO BE DESIGNED AND INSTALLED  
TO IRISH WATER SPECIFICATIONS AND APPROVAL



Nelson House, Emmet Place, 110 Ormonde Street,  
Youghal, Co. Cork.  
t. +353 (0)24 92412  
e. info@dkp.ie www.dkp.ie

Project :  
RESIDENTIAL DEVELOPMENT AT  
BALLYRAGGETT,  
CO. KILKENNY.

Title :  
DRAINAGE PLAN

Purpose of Issue :  
PLANNING

Scale :  
1 : 200

Project No. :  
16766

Drawing No. :  
102

Issue No. :  
P3

SHEET SIZE : A1

