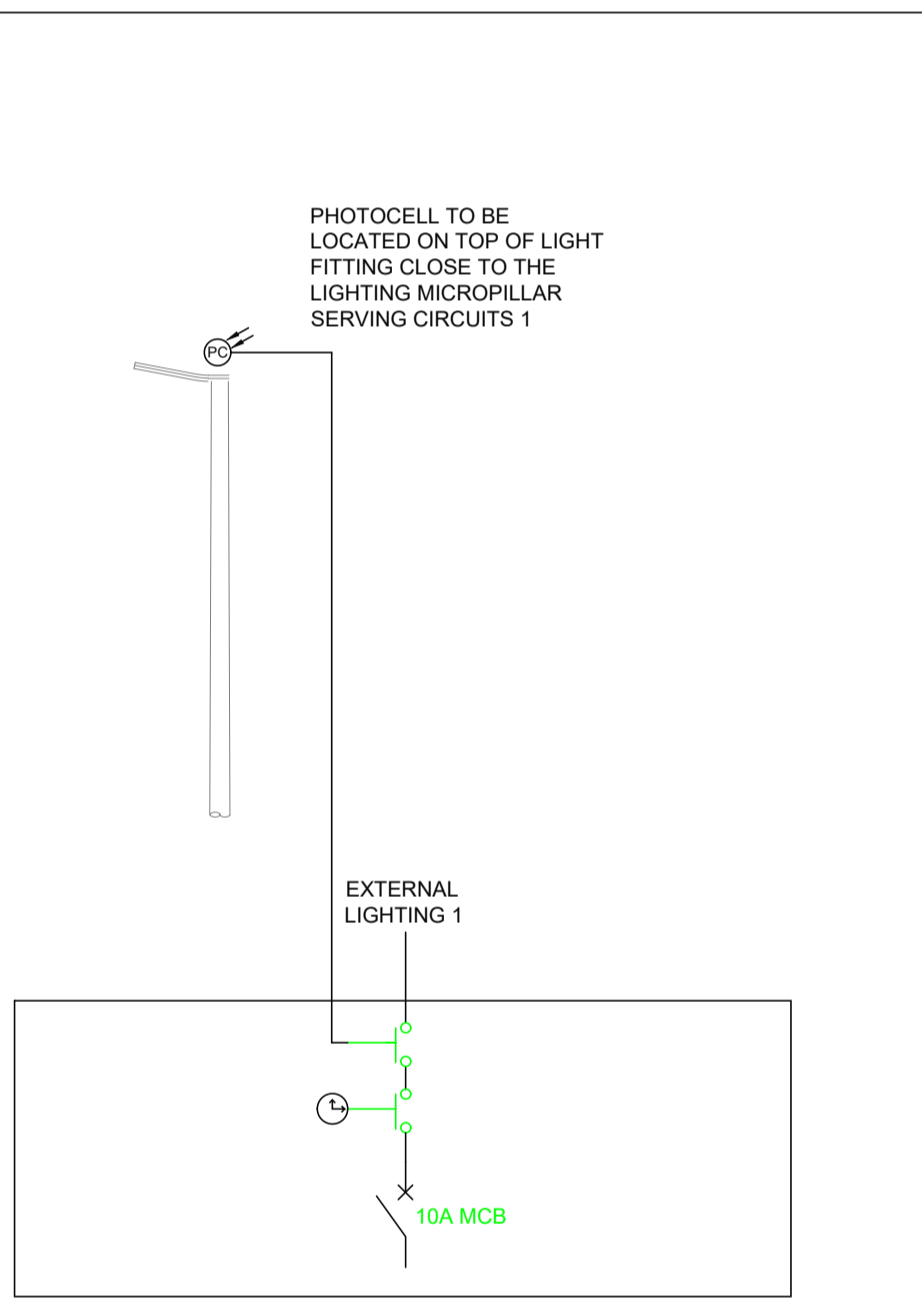
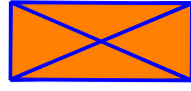

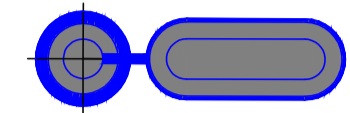


**TYPICAL POLE MOUNTED FITTING ON 6M ROOT MOUNTED OCTAGONAL COLUMN AND INSPECTION CHAMBER**



**LEGEND**  
DO NOT SCALE ALL DIMENSIONS TO BE CHECKED ON SITE

-  SITE LIGHTING MINIPILLAR
-  Ø100mm SITE LIGHTING DUCT
- LUMINAIRE DATA**
-  38W IP66 EXTERIOR LUMINAIRE MOUNTED ON 6m POLE - PHILIPS LUMA BGP621 T25 1xLED59-4s/R30 DM10 BL1 4000K LED OR EQUAL AND APPROVED

- NOTES:**
1. LIGHTING DESIGN TO COMPLY WITH SLL CODE FOR LIGHTING SS STANDARD LOW TRAFFIC AND MODERATE CRIME RATE. AVERAGE LUX LEVELS ON ROAD SURFACE NOT LESS THAN 7.5 LUX WITH A MINIMUM OF 10 LUX IN AREAS WHERE TRAFFIC CALMING MEASURES ARE IN PLACE.
  2. LIGHT FITTINGS ARE TO BE SITUATED IN SUCH A WAY TO MITIGATE DIRECT LIGHT ON WINDOWS OF PROPERTIES.
  3. ALL DUCTS TO HAVE DRAW WIRES AND WARNING TAPE NECESSARY.
  4. EASY SWEEP BENDS TO BE USED FOR CABLE DUCTING WHERE NECESSARY.
  5. CONTRACTOR TO LIAISE WITH ESB FOR PUBLIC LIGHTING CONNECTION TO LIGHTING MICRO PILLAR.



PHILIPS LUMA

P00	15/02/19	ISSUED FOR PLANNING
Rev	Date	Amendments



7 Patrick Street  
Kilkenny

Telephone 056 7721115  
Facsimile 056 7763608  
Email info@nlce.ie  
Web www.nlce.ie

**Noel Lawler**  
CONSULTING ENGINEERS

Title  
**GOLF LINKS ROAD RESIDENTIAL  
PROPOSED SITE LIGHTING LAYOUT**

Drawn by:	AM	Scale:	1:200 @A1	Date:	JAN'19
Checked by:	JL	Drawing no.:	4479/S100		