

BLOCK D
Upper Ground Level Floor Plan
Scale 1:100

BLOCK D

D01-D02-D03-D04

3 Bed 5 Person Duplex units

Quality Housing for Sustainable Communities space provision						
Dwelling Type	Gross Floor Area	Minimum Main Living Room	Aggregate living area	Aggregate bedroom area	Storage	
Target	92	13	34	32	5	
Proposed	104.5	21.6	39.0	32.7	5.2	

PLEASE NOTE:
Minimum unobstructed living room width 3.8m.
Main bedroom area 13m², Double room 11.4m² (2.8m minimum width)

D05-D06

4 Bed 7 Person Duplex units

Quality Housing for Sustainable Communities space provision						
Dwelling Type	Gross Floor Area	Minimum Main Living Room	Aggregate living area	Aggregate bedroom area	Storage	
Target	105	15	40	43	11	
Proposed	130.3	15.0	40.5	44.8	11	

PLEASE NOTE:
Minimum unobstructed living room width 3.8m.
Main bedroom area 13m², Double room 11.4m² (2.8m minimum width)

D07-D12

2 Bed 3 Person Apartments

Quality Housing for Sustainable Communities space provision						
Dwelling Type	Gross Floor Area	Minimum Main Living Room	Aggregate living area	Aggregate bedroom area	Storage	
Target	63	13	28	20	5	
Proposed	65.1	14.0	29.7	20.0	5.2	

PLEASE NOTE:
Minimum unobstructed living room width 3.6m.
Main bedroom area 13m², Double room 11.4m² (2.8m minimum width)

D08-D09-D13-D14

1 Bed 2 Person Apartments

Quality Housing for Sustainable Communities space provision						
Dwelling Type	Gross Floor Area	Minimum Main Living Room	Aggregate living area	Aggregate bedroom area	Storage	
Target	45	11	23	11	3	
Proposed	46.9	12.0	24.3	11.3	3.1	

PLEASE NOTE:
Minimum unobstructed living room width 3.6m.
Main bedroom area 13m², Double room 11.4m² (2.8m minimum width)

D10-D11-D15-D16

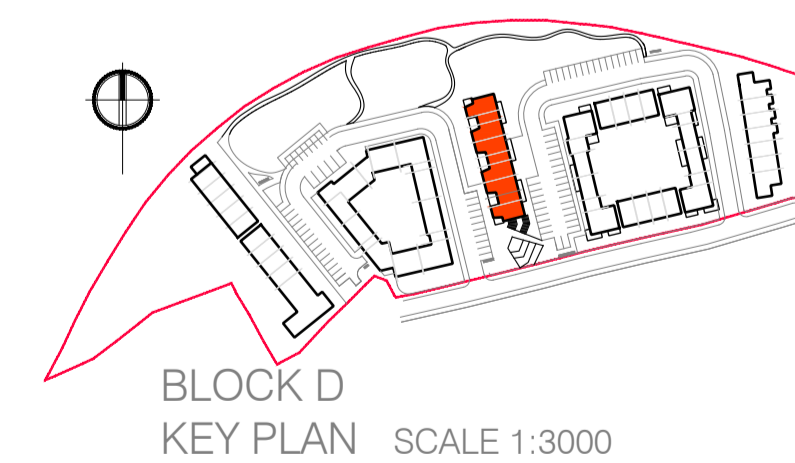
2 Bed 3 Person Apartments

Quality Housing for Sustainable Communities space provision						
Dwelling Type	Gross Floor Area	Minimum Main Living Room	Aggregate living area	Aggregate bedroom area	Storage	
Target	63	13	28	20	5	
Proposed	63.0	14.0	29.0	20.0	5	

PLEASE NOTE:
Minimum unobstructed living room width 3.6m.
Main bedroom area 13m², Double room 11.4m² (2.8m minimum width)

BLOCK D

- 1 Bed 2 Person Apartments □ 4 no
- 2 Bed 3 Person Apartments □ 6 no
- 3 Bed 5 Person Duplex units □ 4 no
- 4 Bed 7 Person Duplex units □ 2 no
- Total units BLOCK D** 16 no



CPR Note:
All works to be carried out using proper materials which are fit for the use they are intended and for the condition in which they are to be used.
All materials used in connection with the works to comply with the Construction Products Regulation (EU) No. 305/2011 and the harmonised technical specifications/standards that fall within the remit of the CPR No. 305/2011

van Dijk Architects
MILL HOUSE, MILL STREET, DUNDALK, CO. LOUTH
PH: 01274-9554466 FAX: 01274-9554460
INFO@VANDIJKARCHITECTS.COM

BLOCK D - UPPER GROUND FLOOR PLAN PLANNING ISSUE

SCALE	1:100	DRAWING NO.	1803-PA-BLD-101	JOB	CROKERS HILL
PROJECT	AI	CAD OPERATOR	1803-PA-BLD-100-200	DATE	KILKENNY CO CO
DESIGNED BY	VP	CHECKED BY	VP	DATE	05.07.2019

NOTE:
FIXED DIMENSIONS MUST BE USED IN PREFERENCE TO STAGG DIMENSIONS. ANY DIMENSIONAL DISCREPANCIES MUST BE REPORTED TO THE ARCHITECT IMMEDIATELY. THIS DRAWING REMAINS THE COPYRIGHT OF VAN DIJK ARCHITECTS. IT MUST NOT BE USED FOR ANY PURPOSES UNLESS SO EXPLICITLY STATED BY THE ARCHITECT. DO NOT COPY OR REDISTRIBUTE THESE DRAWINGS OR ANY ADDITIONAL INFORMATION WITHOUT THE EXPRESSED APPROVAL OF van Dijk Architects