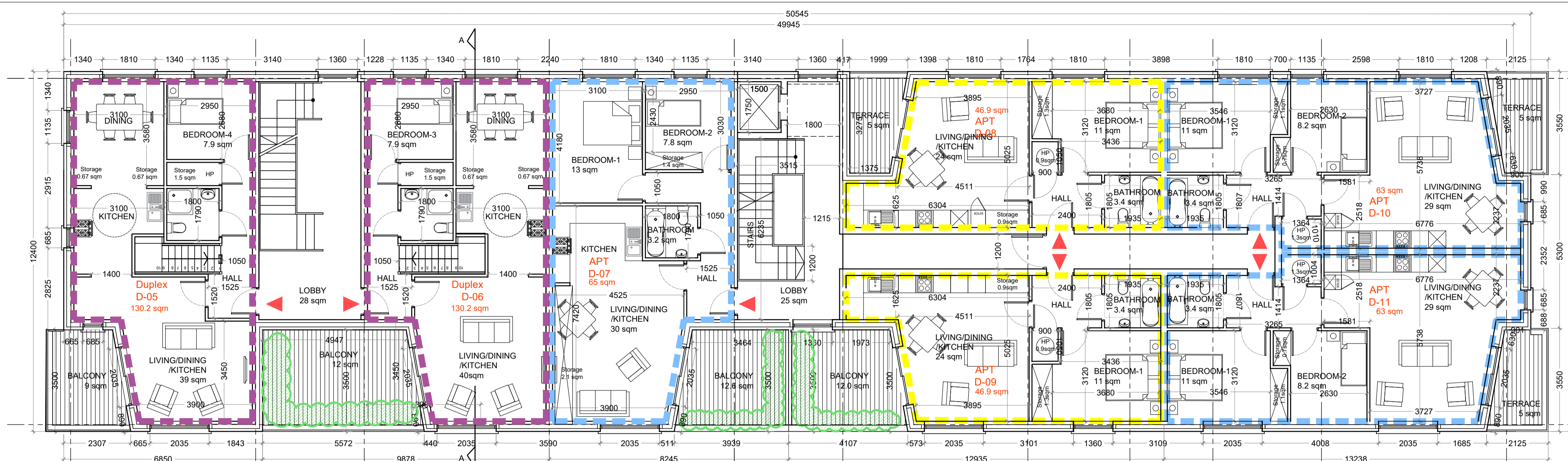
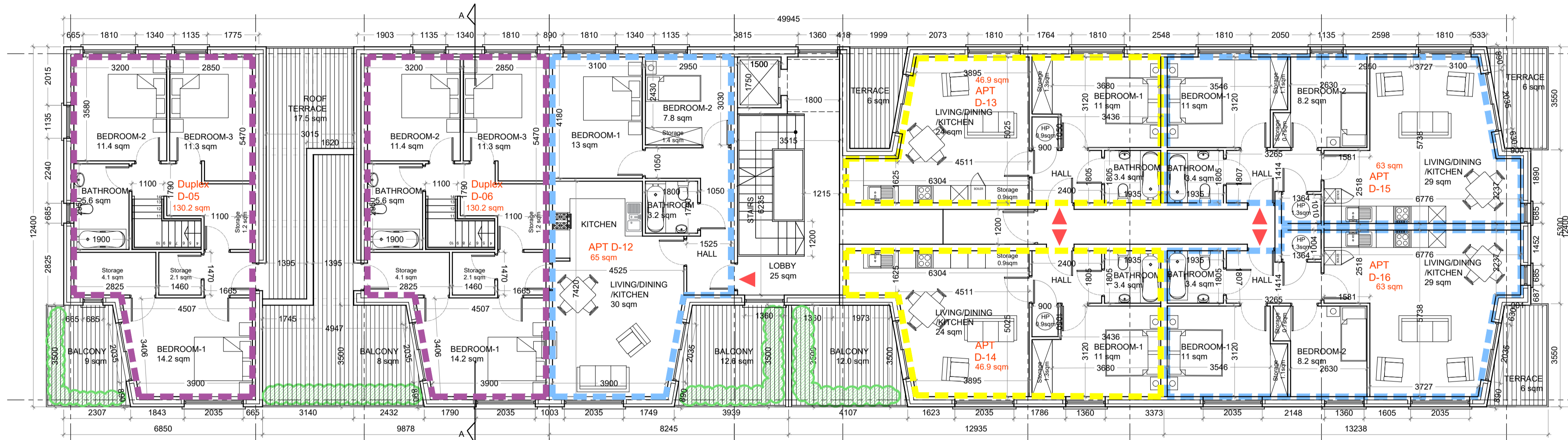


Rev.	By	Date	Description
A			



**BLOCK D**  
First Floor Plan  
Scale 1:100



**BLOCK D**  
Second Floor Plan  
Scale 1:100

**BLOCK D**

**D01-D02-D03-D04**

**3 Bed 5 Person Duplex units**

Quality Housing for Sustainable Communities space provision					
Dwelling Type	Gross Floor Area	Minimum Main Living Room	Aggregate living area	Aggregate bedroom area	Storage
Target	92	13	34	32	5
Proposed	104.5	21.6	39.0	32.7	5.2

PLEASE NOTE:  
Minimum unobstructed living room width 3.8m.  
Main bedroom area 13m<sup>2</sup>. Double room 11.4m<sup>2</sup> (2.8m minimum width)

**D05-D06**

**4 Bed 7 Person Duplex units**

Quality Housing for Sustainable Communities space provision					
Dwelling Type	Gross Floor Area	Minimum Main Living Room	Aggregate living area	Aggregate bedroom area	Storage
Target	105	15	40	43	11
Proposed	130.3	15.0	40.5	44.8	11

PLEASE NOTE:  
Minimum unobstructed living room width 3.8m.  
Main bedroom area 13m<sup>2</sup>. Double room 11.4m<sup>2</sup> (2.8m minimum width)

**D07-D12**

**2 Bed 3 Person Apartments**

Quality Housing for Sustainable Communities space provision					
Dwelling Type	Gross Floor Area	Minimum Main Living Room	Aggregate living area	Aggregate bedroom area	Storage
Target	63	13	28	20	5
Proposed	65.1	14.0	29.7	20.0	5.2

PLEASE NOTE:  
Minimum unobstructed living room width 3.6m.  
Main bedroom area 13m<sup>2</sup>. Double room 11.4m<sup>2</sup> (2.8m minimum width)

**D08-D09-D13-D-14**

**1 Bed 2 Person Apartments**

Quality Housing for Sustainable Communities space provision					
Dwelling Type	Gross Floor Area	Minimum Main Living Room	Aggregate living area	Aggregate bedroom area	Storage
Target	45	11	23	11	3
Proposed	46.9	12.0	24.3	11.3	3.1

PLEASE NOTE:  
Minimum unobstructed living room width 3.6m.  
Main bedroom area 13m<sup>2</sup>. Double room 11.4m<sup>2</sup> (2.8m minimum width)

**D10-D11-D15-D16**

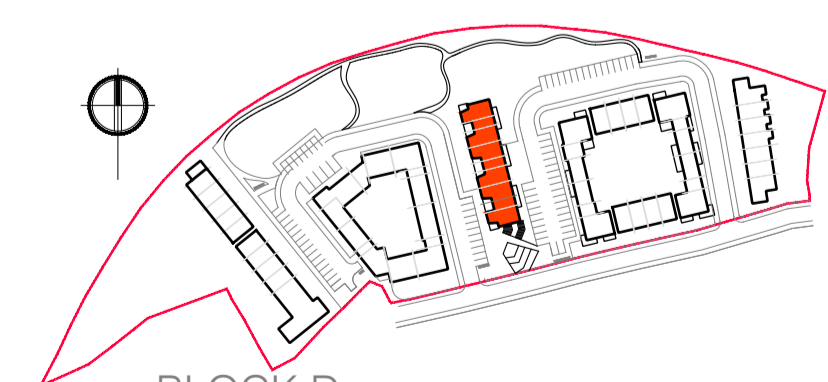
**2 Bed 3 Person Apartments**

Quality Housing for Sustainable Communities space provision					
Dwelling Type	Gross Floor Area	Minimum Main Living Room	Aggregate living area	Aggregate bedroom area	Storage
Target	63	13	28	20	5
Proposed	63.0	14.0	29.0	20.0	5

PLEASE NOTE:  
Minimum unobstructed living room width 3.6m.  
Main bedroom area 13m<sup>2</sup>. Double room 11.4m<sup>2</sup> (2.8m minimum width)

**BLOCK D**

- 1Bed 2 Person Apartments 4 no
- 2 Bed 3 Person Apartments 6 no
- 3 Bed 5 Person Duplex units 4 no
- 4 Bed 7 Person Duplex units 2 no
- Total units BLOCK D 16 no**



**CPR Note:**  
All works to be carried out using proper materials which are fit for the use they are intended and for the condition in which they are to be used.  
All materials used in connection with the works to comply with the Construction Products Regulation (EU) No. 305/2011 and the harmonised technical specifications/standards that fall within the remit of the CPR No. 305/2011

**van Dijk Architects**  
MILL HOUSE, MILL STREET, DUNDALK, CO. DUBLIN  
PH: 01274-955466 FAX: 01274-955466  
INFO@VANDIJKARCHITECTS.COM

DRAWING TITLE  
**BLOCK D 1ST AND 2ND FLOOR PLANS PLANNING ISSUE**

SCALE	H:100	DRAWING NUMBER	1803-PA-BLD-102	JOB	CROKERS HILL
PROJECT	AI	CAD NUMBER	1803-PA-BLD-100-200	CLIENT	KILKENNY CO CO
DESIGNED BY	VF	DRAWN BY	VP	DATE	05.07.2019

NOTE:  
FIXED DIMENSIONS MUST BE USED IN PREFERENCE TO SCALE DIMENSIONS. ANY DIMENSIONAL DISCREPANCIES MUST BE REPORTED TO THE ARCHITECT IMMEDIATELY. THIS DRAWING REMAINS THE COPYRIGHT OF VAN DIJK ARCHITECTS. IT MUST NOT BE USED FOR ANY PURPOSES OUTSIDE OF THE INTENDED PROJECT WITHOUT THE EXPRESS PERMISSION OF VAN DIJK ARCHITECTS. DO NOT COPY OR REDISTRIBUTE THESE DRAWINGS OR ANY ADDITIONAL INFORMATION WITHOUT THE EXPRESS APPROVAL OF VAN DIJK ARCHITECTS