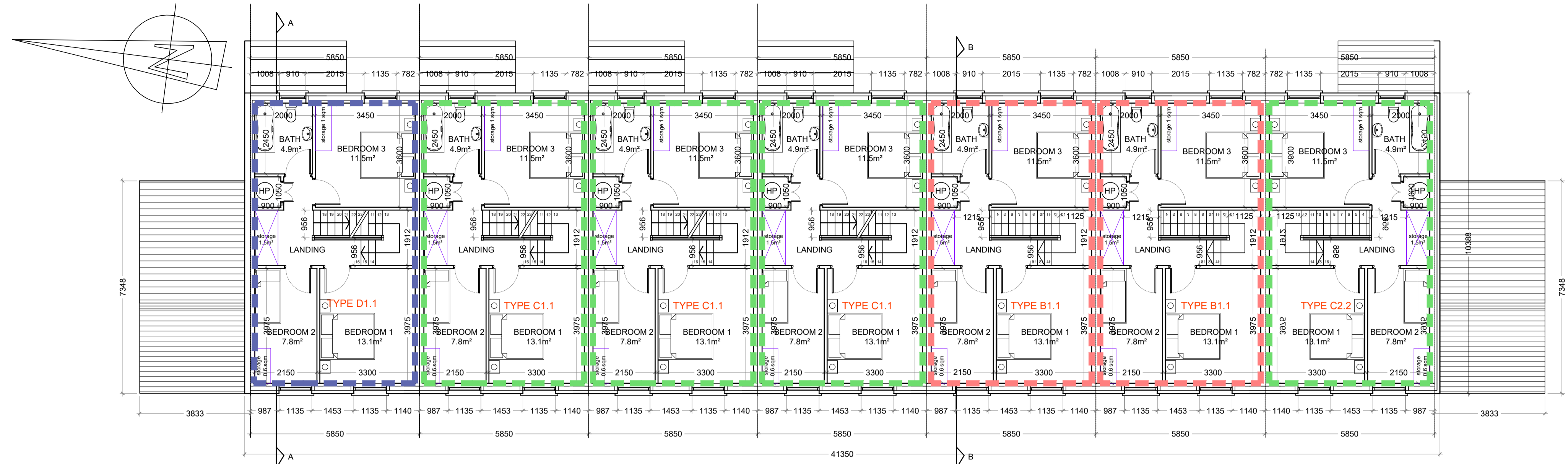
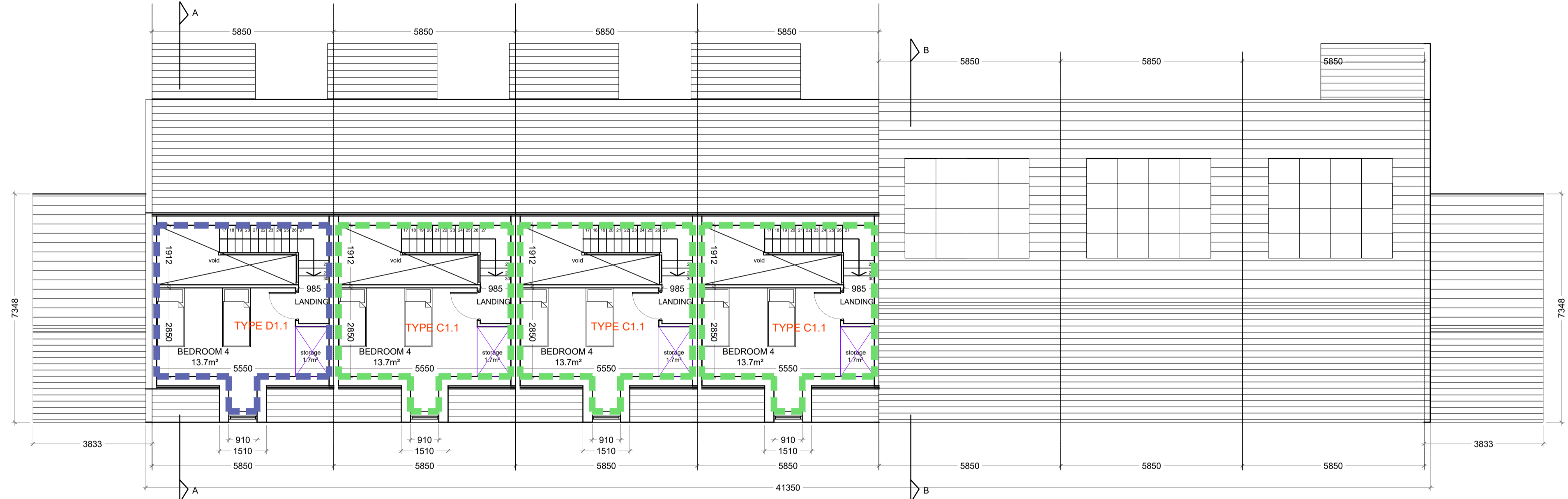


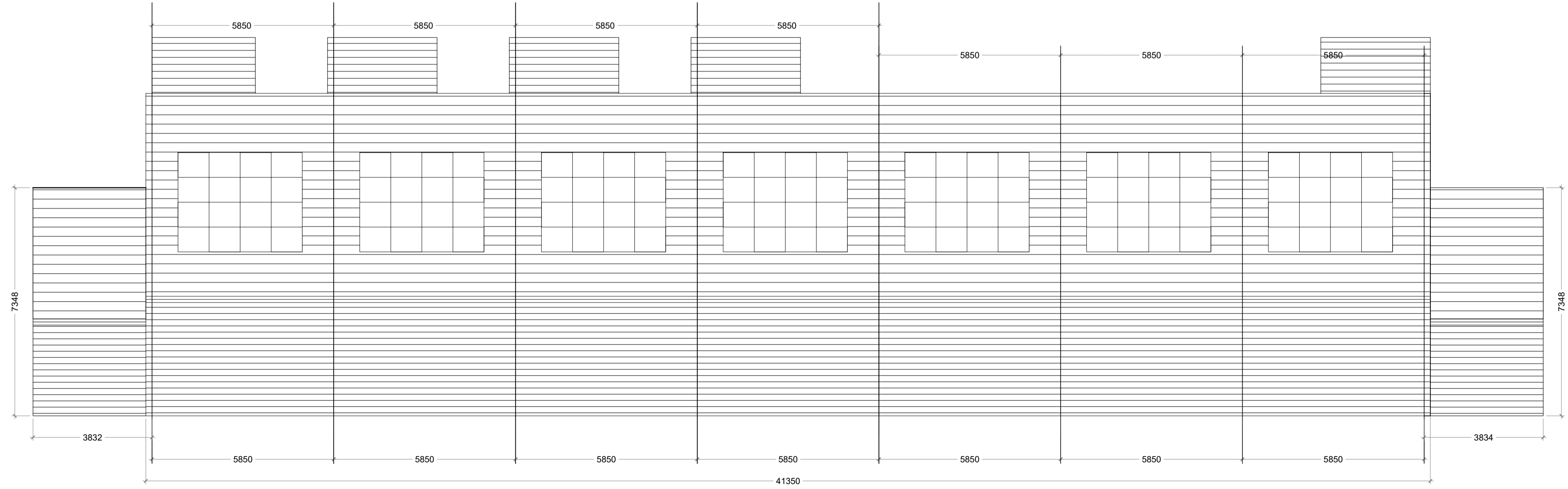
Rev.	By	Date	Description
A	CS		



BLOCK F
First Floor Plan
Scale 1:100



BLOCK F
Attic Level Plan
Scale 1:100



BLOCK F
Roof Plan
Scale 1:100

BLOCK F

TYPE D1.1
REF: F-01 **5 Bed 9 Person House units**

Quality Housing for Sustainable Communities space provision						
Target	Dwelling Type	Gross Floor Area	Minimum Main Living Room	Aggregate living area	Aggregate bedroom area	Storage
	5 Bed/9 Person	120	15	40	43	6
Proposed	5Bed/9 Person	152.0	15.4	40.4	46.2	8.4

PLEASE NOTE:
Minimum unobstructed living room width 3.8m.
Main bedroom area 13m2, Double room 11.4m2 (2.8m minimum width)

TYPE C1.1
REFS: F02-F03-F04 **4 Bed 7 Person House units**

Quality Housing for Sustainable Communities space provision						
Target	Dwelling Type	Gross Floor Area	Minimum Main Living Room	Aggregate living area	Aggregate bedroom area	Storage
	4 Bed/7 Person	120	15	40	43	6
Proposed	4 Bed/7 Person	126.0	15.4	40.4	46.2	6.7

PLEASE NOTE:
Minimum unobstructed living room width 3.8m.
Main bedroom area 13m2, Double room 11.4m2 (2.8m minimum width)

TYPE B1.1
REFS: F05-F06 **3 Bed 5 Person House units**




Quality Housing for Sustainable Communities space provision						
Target	Dwelling Type	Gross Floor Area	Minimum Main Living Room	Aggregate living area	Aggregate bedroom area	Storage
	3 Bed/5 Person	92	13	34	32	5
Proposed	3 Bed/5 Person	107.5	15.4	35.3	32.5	6.1

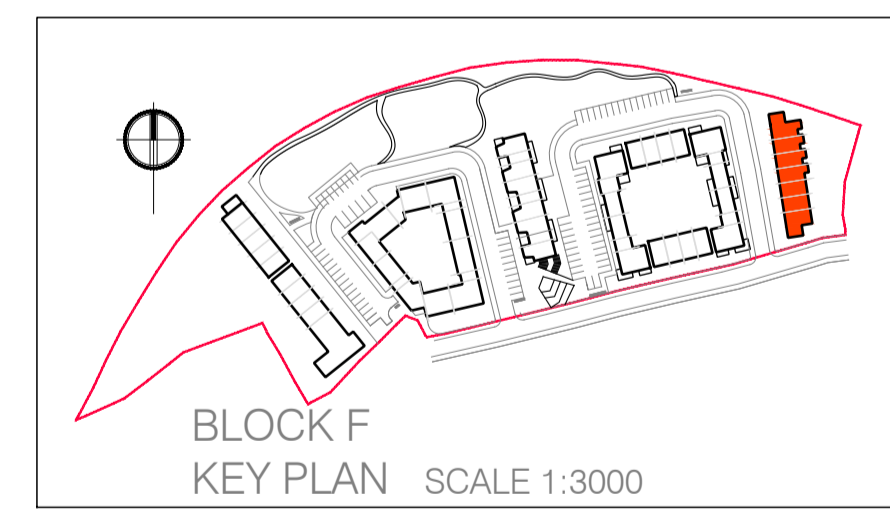
PLEASE NOTE:
Minimum unobstructed living room width 3.8m.
Main bedroom area 13m2, Double room 11.4m2 (2.8m minimum width)

TYPE C2.2
REFS: F07 **4 Bed 7 Person House units**

Quality Housing for Sustainable Communities space provision						
Target	Dwelling Type	Gross Floor Area	Minimum Main Living Room	Aggregate living area	Aggregate bedroom area	Storage
	3 Bed/5 Person	110	15	40	43	6
Proposed	3 Bed/5 Person	129.0	15.4	40.4	46.1	6.7

PLEASE NOTE:
Minimum unobstructed living room width 3.8m.
Main bedroom area 13m2, Double room 11.4m2 (2.8m minimum width)

4 Bed 7 Person House units		4 no
3 Bed 5 Person House units		2 no
5 Bed 9 Person House units		1 no
Total units BLOCK F		7 no



CPR Note:
All works to be carried out using proper materials which are fit for the use they are intended and for the condition in which they are to be used.
All materials used in connection with the works to comply with the Construction Products Regulation (EU) No. 305/2011 and the harmonised technical specifications/standards that fall within the remit of the CPR No. 305/2011

van Dijk Architects
MILL HOUSE, MILL STREET, DUNDALK, CO. DUBLIN
TEL: 0127-9554466 FAX: 0127-9554460
INFO@VANDIJKARCHITECTS.COM

DRAWING TITLE					
BLOCK F UPPER FLOORS AND ROOF PLANNING ISSUE					
SCALE	DRAWING NUMBER	JOB	CLIENT		
1:100	1803-PA-BLF-101	CRPKERS HILL	KILKENNY COUNTY COUNCIL		
PROJECT	DATE	DESIGNED BY	CHECKED BY	DATE	
VF	05.07.2019	VP			

NOTE:
FIXED DIMENSIONS MUST BE USED IN PREFERENCE TO DIMENSION LINES. ANY DIMENSIONAL DISCREPANCIES MUST BE REPORTED TO THE ARCHITECT IMMEDIATELY. THIS DRAWING REMAINS THE COPYRIGHT OF VAN DIJK ARCHITECTS. IT MUST NOT BE USED FOR ANY PURPOSES OUTSIDE OF THE EXPRESS PERMISSION OF THE ARCHITECT. IT IS NOT TO BE REPRODUCED OR TRANSMITTED IN ANY FORM OR BY ANY MEANS, ELECTRONIC OR MECHANICAL, WITHOUT THE EXPRESS PERMISSION OF VAN DIJK ARCHITECTS.