

GENERAL DRAINAGE NOTES:

- ALL DIMENSIONS ARE IN mm UNLESS OTHERWISE NOTED.
- ALL LEVELS ARE IN METRES ABOVE DATUM UNLESS OTHERWISE NOTED.
- ALL PIPE DIAMETERS ARE NORMAL.
- THE CONTRACTOR MUST CONTACT THE RELEVANT AUTHORITIES PRIOR TO CONSTRUCTION WORK, & SATISFY HIMSELF IN RESPECT TO THE LOCATION OF ALL EXISTING SERVICES.
- ALL SEWER & DRAIN PIPES ARE CLASS 'C' uPVC UNLESS OTHERWISE STATED.
- ALL BEDDING TO SEWERS IS CLASS 'B' UNLESS OTHERWISE NOTED.
- ALL MANHOLES CAN BE EITHER PRECAST CONCRETE RING MANHOLES OR BLOCKWORK UNLESS OTHERWISE STATED.
- 600mm MAX. LENGTH ROCKER PIPES ARE TO BE PROVIDED ON SEWER WHERE:
 - A PIPE ENTERS A MANHOLE OR PUMPING STATION.
 - A PIPE LEAVES A MANHOLE.
 - A PIPE ENTERS CONCRETE ENCASUREMENT.
 - A PIPE LEAVES CONCRETE ENCASUREMENT.
 - ANY OTHER LOCATION AS DIRECTED BY THE ENGINEER.
- ALL SEWER ROCKER PIPES ARE TO BE FORMED BY CUTTING & TRIMMING A LENGTH OF SPIGOT & SOCKET PIPE TO FORM A SPIGOT AT THE CUT END, THEREBY FORMING SPIGOT & SOCKET JOINTS AT BOTH ENDS OF THE ROCKER PIPE.
- WHERE SEWER PIPES OR RISING MAINS CONNECT TO EXISTING MANHOLES, THE CONTRACTOR IS REQUIRED TO:
 - CONTACT THE RELEVANT AUTHORITIES PRIOR TO COMMENCING WORK.
 - MAKE GOOD THE EXISTING CHAMBER WALL AT THE PROPOSED POINT OF PENETRATION & ADJUST THE EXISTING BENCHING TO THE SATISFACTION OF THE ENGINEER.

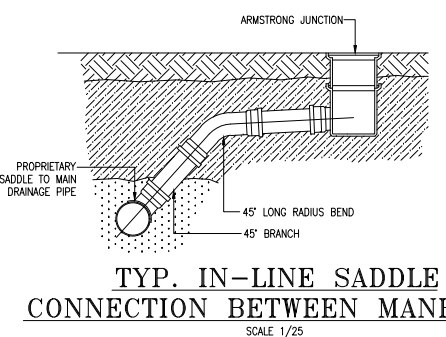
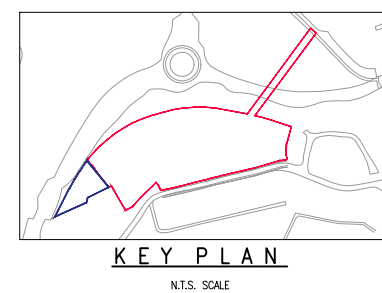
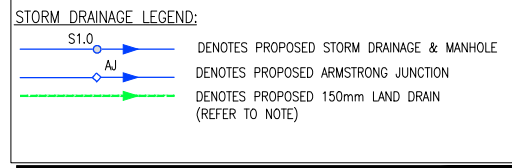
TESTING OF SEWERS:

- FOUL & SURFACE WATER SEWERS TO BE TESTED EITHER BY WATER OR AIR TEST. IF THE AIR TEST IS CARRIED OUT & THE RESULTS SHOW A FAILURE THEN A WATER TEST SHALL BE SUBSEQUENTLY CARRIED OUT TO DETERMINE ACCEPTANCE OR REJECTION.
- WATER TESTS CARRIED OUT SHALL BE TESTED IN UNDER A HEAD OF WATER IN ACCORDANCE WITH BS 8301 1995, & CARRIED OUT FOR A MINIMUM OF 30 MINUTES.
- THE CONTRACTOR IS TO ENGAGE AN ENGINEER WITH PROFESSIONAL INDEMNITY INSURANCE TO SUPERVISE ALL AIR/WATER TESTS ON MAINS BEFORE BACKFILLING.
- ON COMPLETION OF ALL SEWERS DRAINS & GULLIES, ALL SEWERS SHALL BE FLUSHED OUT & LEFT FREE FROM DEFECT & OBSTRUCTION & SUBSEQUENTLY A CCTV SURVEY SHALL BE CARRIED OUT BY AN INDEPENDENT CONTRACTOR OF THE AS BUILT DRAINAGE. THE CCTV SURVEY SHALL INCLUDE A REPORT & DVD & SHALL BE SUBMITTED TO THE ENGINEER & ARCHITECT PRIOR TO PRACTICAL COMPLETION.
- ON COMPLETION OF ALL SEWERS, DRAINS & GULLIES AN AS-BUILT SURVEY MUST BE SUBMITTED INCLUDING LOCATION OF MANHOLES RELATIVE TO THE BUILDING OUTLINE, COVER, INVERT LEVELS & PIPE DIAMETERS TO THE ENGINEER & ARCHITECT FOR THEIR REVIEW PRIOR TO PRACTICAL COMPLETION.

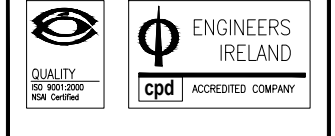
GENERAL NOTES:

- THIS DRAWING TO BE READ IN CONJUNCTION WITH ALL RELEVANT ARCHITECTS, SERVICE ENGINEERS DRAWINGS & SPECIFICATIONS.
- ALL LEVELS ARE STRUCTURAL UNLESS NOTED OTHERWISE.
- ALL WORKS TO BE CARRIED OUT IN ACCORDANCE WITH THE RELEVANT BUILDING REGULATIONS.
- DO NOT SCALE - WORK TO FIGURE DIMENSIONS ONLY.

LAND DRAINS AT THE BASE OF ALL RETAINING WALLS TO BE CONNECTED TO THE PROPOSED STORM DRAINAGE NETWORK WITH 225MMØ STORM DRAINAGE PIPE AT 1:150 GRADIENT.



SD Pipe Section	US MH CL	US MH IL	DS MH IL	Length (m)	Pipe Diameter (mm)	Pipe Grad. (1 in 100)	Notes
S1.0 to S1.1	58.485	57.300	54.965	38.500	225	164	
S1.1 to S1.2	58.870	56.965	54.635	38.500	300	100	
S1.2 to S1.3	59.225	56.635	54.240	38.500	300	101	
S1.3 to S1.4	57.800	54.235	54.180	7.500	300	100	
S1.4 to S1.5	57.330	53.760	53.715	4.500	300	100	
S1.5 to Attc	57.045	53.715	53.696	2.500	300	100	
Attc to S1.6	57.005	53.590	53.575	1.500	300	100	
S1.6 to S1.7	57.000	53.575	53.575	20.000	225	100	
S1.7 to S1.8	54.500	53.575	53.090	28.700	225	101	BD
S1.8 to S1.9	63.000	51.575	51.275	30.100	225	100	BD
S1.9 to S1.10	63.100	49.670	49.375	29.600	225	100	BD
S1.10 to S1.11	60.800	47.600	47.325	28.650	225	104	BD
S1.11 to S1.12	48.700	45.515	45.290	28.050	225	100	BD
S1.12 to S1.13	48.620	45.360	44.800	45.800	225	100	
S1.13 to S1.14	48.250	44.800	44.700	6.200	225	62	
S2.0 to S2.1	56.140	55.075	54.655	28.000	225	62	
S2.1 to S2.2	56.140	54.655	54.485	32.000	225	145	
S2.2 to S2.3	56.720	54.435	54.235	30.150	225	151	
S3.0 to S3.1	54.400	53.135	52.630	60.650	225	100	
S3.1 to S3.2	54.500	53.630	52.220	41.000	225	100	
S3.2 to S3.3	53.650	51.820	51.760	6.450	225	107	
S3.3 to Attc	53.330	51.760	51.725	3.700	225	106	
Attc to S3.5	53.330	51.625	51.615	1.050	225	105	
S3.5 to S3.9	53.150	51.615	51.575	4.000	225	100	
S4.0 to S4.1	55.190	53.280	52.755	62.600	225	100	
S4.1 to S4.2	54.800	52.755	52.100	65.500	225	100	
S4.2 to S4.3	53.225	52.100	51.830	29.800	225	106	
S5.0 to S5.1	56.600	57.360	57.260	9.500	225	100	
S5.1 to S5.1	58.600	57.265	57.200	12.650	225	198	
S6.0 to S1.1	68.800	51.185	56.985	21.700	225	99	



Referenced drawings

Dwg No.	Dwg Title

Issue register

Rev.	Date	Description	Des.	Chkd.	Apprd.
PL1	08.02.19	PLANNING ISSUE	EN	NP	NP
PL2	25.02.19	PLANNING ISSUE	EN	NP	NP

Client: **KILKENNY COUNTY COUNCIL**

Job Description: **CROKERS HILL HOUSING DEVELOPMENT**

Status: **PLANNING ISSUE**

Drawing Title: **STORM DRAINAGE LAYOUT**

Project No: **18KK003** | Drawing Ref: **C-020** | Rev: **PL2**

Date: **01.11.18** | Scale: **A3 - 1/1000; A1 - 1/500**

Drawn By: **M.DI DATO** | Checked By: **N.PATTERSON** | Approved By: **N.PATTERSON**

Hayes Higgins Partnership
Gas House Lane, Kilkenny.

Hayes Higgins Partnership
Gas House Lane, Kilkenny
(044) 714710 (046) 773223 info@hayeshiggins.com
58 Fleetville Square, Dublin 2. (01) 4612321 (01) 4625854 admin@hayeshiggins.com