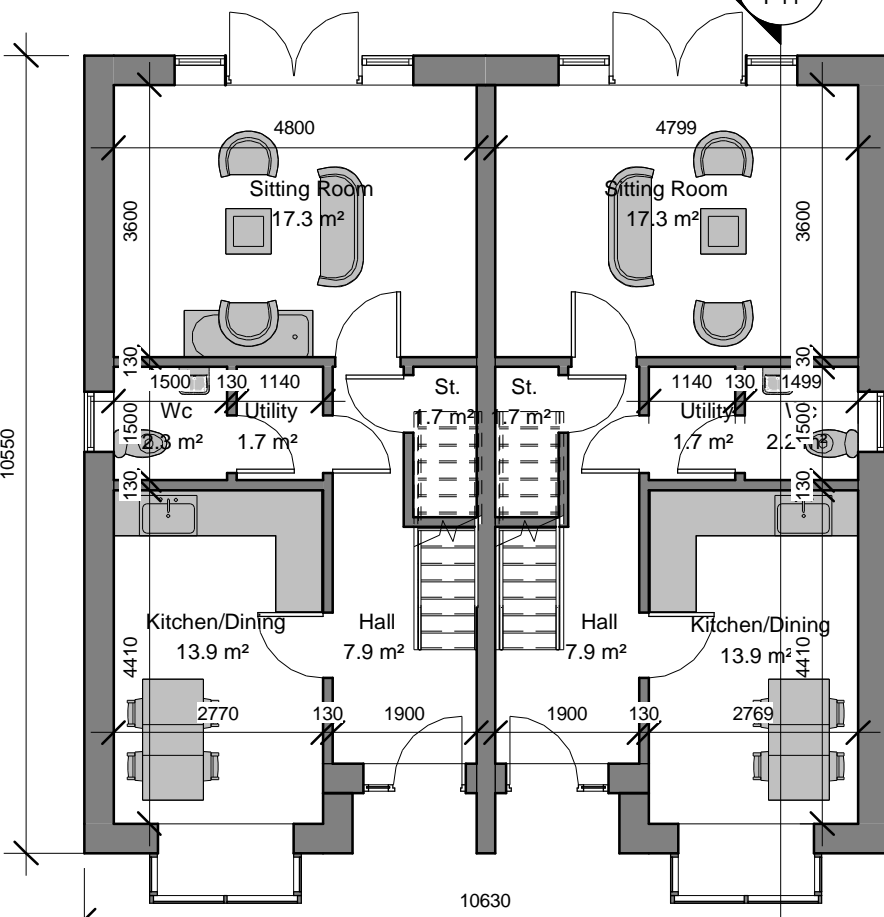
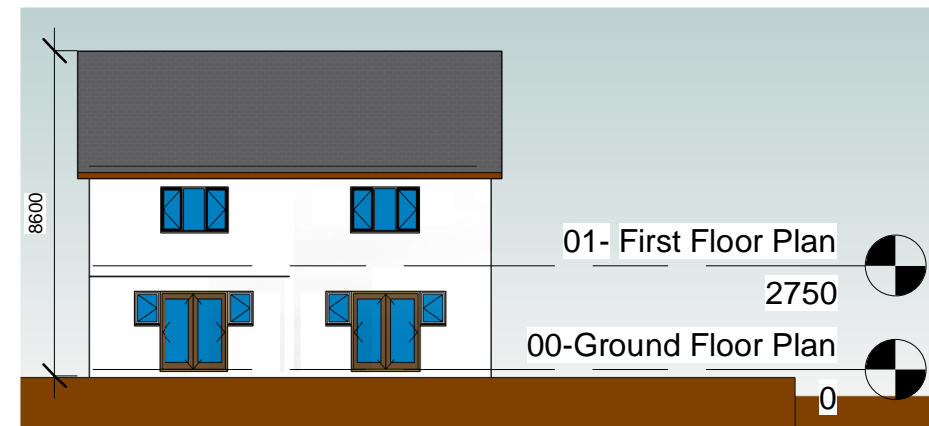


2 01- First Floor Plan
1 : 100

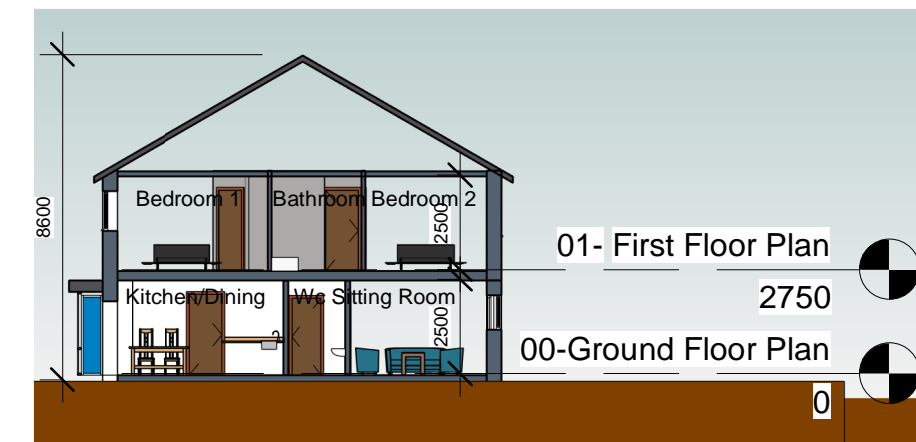


1 00-Ground Floor Plan
1 : 100

6 Front Elevation
1 : 200

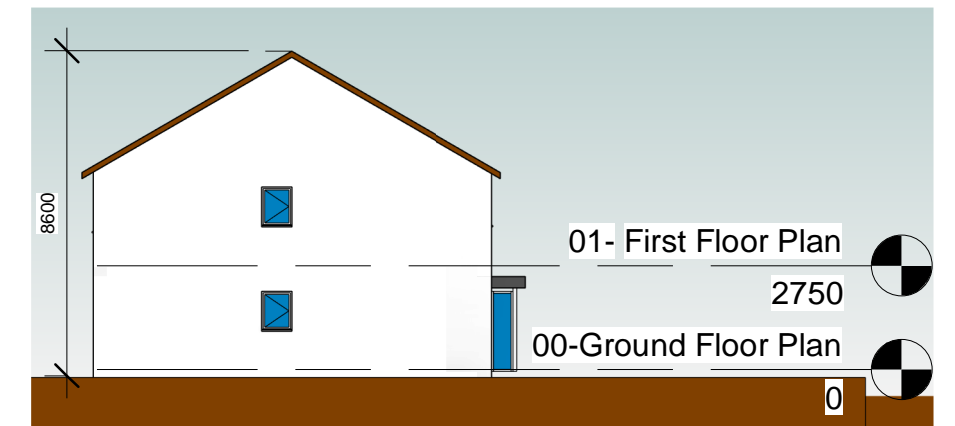


4 Rear Elevation
1 : 200



7 Section
1 : 200

5 Side Elevation 1
1 : 200



3 Side Elevation 2
1 : 200

FLOOR AREA SCHEDULE		
Table in accordance with figures taken from Quality Housing for Sustainable Communities, Table 5.1 - published by DoEHLG		
House Type B: [dwelling type: 2BED/4P House (2 storey)]		
Area required	Area provided	Minimum area requirement
Aggregate Living	31.3m2	30.0m2
Bedroom 1	16.7m2	13.0m2
Bedroom 2	13.0m2	11.1m2
Total Storage provided	5.0m2	4.0m2
Gross Floor Area	89.6m2	80.0m2
Widths		
	Width Provided	Minimum width requirement
Living Room	3.6m	3.6m
Bedroom 1	4.0m	2.8m
Bedroom 2	3.2m	2.8m

EXTERNAL FINISHES	
ROOF:	Selected black flat concrete roof tiles with matching ridge tiles
	Aluminium lined fascias and soffits with rainwater goods to match
	Nap plaster finish to external masonry walls
	Triple glazed External Windows
	Composite front doors with triple glazed screens,
	Rear Doors with glazed panels

DESCRIPTION	DATE
HOUSING TECHNICAL SECTION	
 Kilkenny County Council County Hall John Street Kilkenny Tel: 056 7794000 Fax: 056 7794004 E-mail: info@kilkennycoco.ie Webpage: www.kilkennycoco.ie Serving People - Preserving Heritage © COPYRIGHT RESERVED	
STAGE: X	PLANNING TENDER CONSTRUCTION
PROJECT:	Housing Development at Canal Road, Johnstown
DRAWINGS:	House Type B1 - General Arrangement
DRAWN BY: PT	SCALE: As indicated
CHECKED BY: EG	DATE: 16/06/2021 18:10:23
FILE No. HS 132	DRAWING No. P11
<small>ALL ORDNANCE SURVEY DATA BASED ON ORDNANCE SURVEY OF IRELAND MAP LICENCE NUMBER 2013/27/CCMA/KILKENNY</small>	