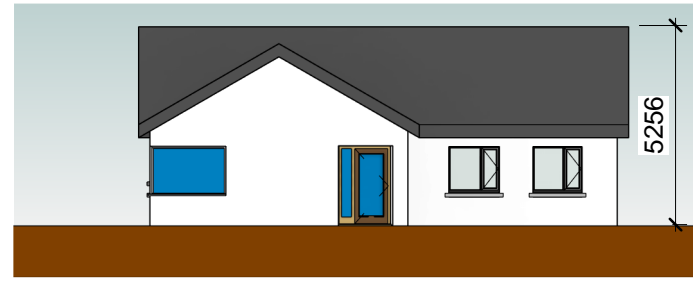
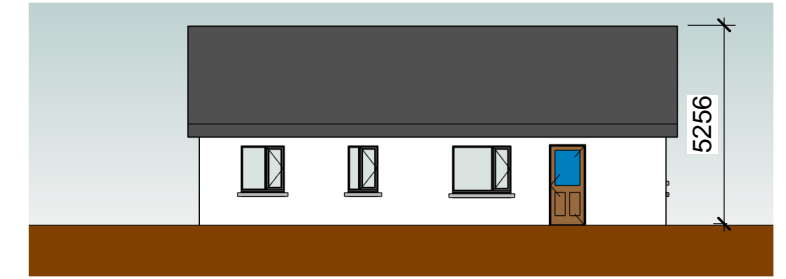


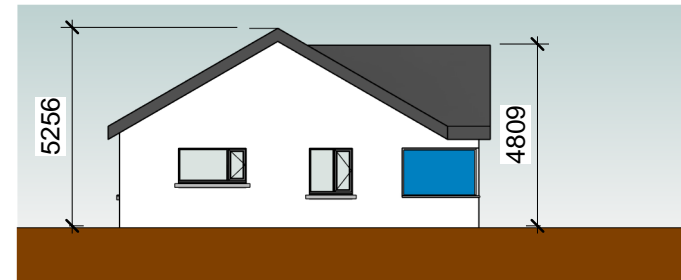
1 Level 0
1 : 100



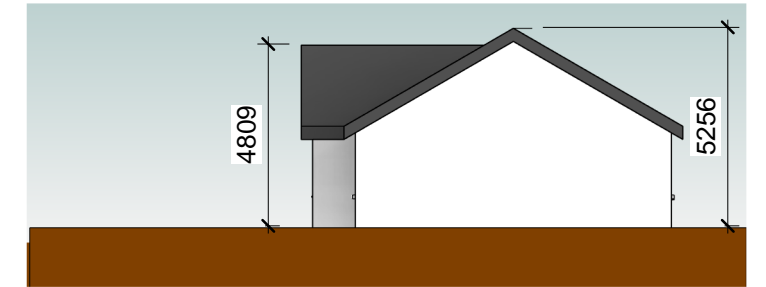
3 Front Elevation
1 : 200



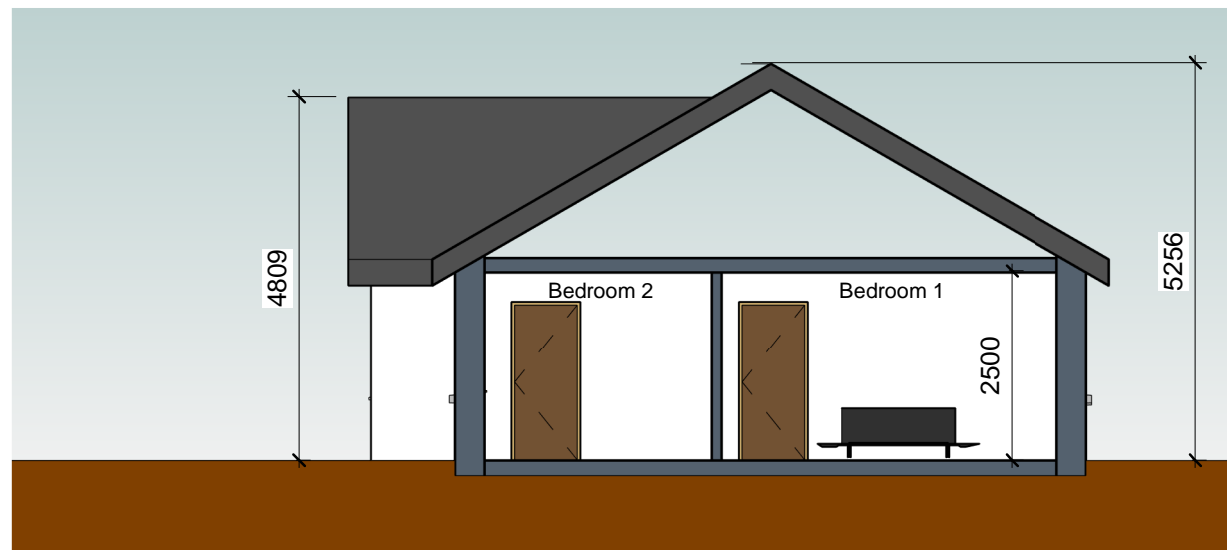
4 Rear Elevation
1 : 200



6 Side Elevation 1
1 : 200



5 Side Elevation 2
1 : 200



2 Section 1
1 : 100

FLOOR AREA SCHEDULE		
Table in accordance with figures taken from Quality Housing for Sustainable Communities, Table 5.1 - published by DoEHLG		
House Type D: [dwelling type: 2BED/4P House (1 storey)]		
Area required	Area provided	Minimum area requirement
Aggregate Living	38.8m ²	30.0m ²
Bedroom 1	13.3m ²	13.0m ²
Bedroom 2	13.1m ²	7.1m ²
Total Storage provided	4.0m ²	4.0m ²
Gross Floor Area	93.0m ²	70.0m ²
Widths		
Width Provided	Width Provided	Minimum width requirement
Living Room	4.1m	3.6m
Bedroom 1	3.0m	2.8m
Bedroom 2	3.0m	2.1m

EXTERNAL FINISHES	
ROOF: Selected black flat concrete roof tiles with matching ridge tiles	
Aluminium lined fascias and soffits with rainwater goods to match	
Nap plaster finish to external masonry walls	
Triple glazed External Windows	
Composite front doors with triple glazed screens,	
Rear Doors with glazed panels	

DESCRIPTION	DATE
HOUSING TECHNICAL SECTION	
<p>Kilkenny County Council County Hall John Street Kilkenny Tel: 056 7794000 Fax: 056 7794004 E-mail: info@kilkennycoco.ie Webpage: www.kilkennycoco.ie Serving People - Preserving Heritage © COPYRIGHT RESERVED</p>	
STAGE: X	PLANNING TENDER CONSTRUCTION
PROJECT: Housing Development at Canal Road, Johnstown	
DRAWING: House Type D - General Arrangement	
DRAWN BY: PT	SCALE: As indicated
CHECKED BY: EG	DATE: 16/06/2021 18:18:55
FILE No. HS 132	DRAWING No. P13
ALL ORDNANCE SURVEY DATA BASED ON ORDNANCE SURVEY OF IRELAND MAP LICENCE NUMBER "2013/27/CCMA/KILKENNY"	