

# Strategic Environmental Assessment Applicability Assessment Report

## Ballyragget Masterplan

March 2024



**Turley**

# Table of Contents

Strategic Environmental Assessment Screening for Ballyragget		1
1.	Introduction	3
2.	Strategic Environmental Assessment	4
3.	Guidance and Legislation	6
4.	Ballyragget Masterplan	8
5.	SEA Screening Methodology	14
6.	SEA Screening	20
7.	Conclusion	22
Appendix 1: References		23

**Client**

Kilkenny County Council

**Our reference**

KILX3007

March 2024

# 1. Introduction

- 1.1 The Ballyragget Masterplan (hereafter referred to as ‘the Plan’) is a non-statutory plan commissioned by Kilkenny County Council (KCC) for Ballyragget.
- 1.2 The purpose of the Plan is to guide the development of Ballyragget into the future and to influence and deliver on real change for the town in order to make it a more attractive destination in which to live, work, visit and do business.
- 1.3 Turley<sup>1</sup> has been commissioned by KCC to carry out a Strategic Environmental Assessment (SEA) applicability screening of the plan.
- 1.4 SEA screening is defined in the relevant guidance documents<sup>2</sup> as *“the process for deciding whether a particular plan, other than those for which SEA is mandatory, would be likely to have significant environmental effects, and would thus warrant SEA.”*
- 1.5 The purpose of this document is to carry out an assessment to determine, if SEA applies to the Plan in accordance with the European Directive 2001/42/EC on the Assessment of the Effects of Certain Plans and Programmes on the Environment (“SEA Directive”) as transposed by the European Communities (Environmental Assessment of Certain Plans and Programmes) Regulations 2004 (S.I. 435 of 2004), as amended.
- 1.6 This SEA Applicability Report provides the findings of this process for the Plan, which provides a pre-screening check, known as a Stage 1 Applicability Assessment, allowing for the rapid screening of environmental effects to determine whether or not an SEA is required via a Stage 2 SEA Screening.

---

<sup>1</sup> 4 Pembroke Street Upper, Dublin, D02 VN24, Ireland

<sup>2</sup> Implementation of SEA Directive (2001/42/EC): Assessment of the Effects of Certain Plans and Programmes on the Environment- Guidelines for Regional Authorities and Planning Authorities (Department of the Environment, Community and Local Government, 2004)

## 2. Strategic Environmental Assessment

### Overview

- 2.1 Strategic Environmental Assessment SEA is defined as *“the formal, systematic evaluation of the likely significant environmental effects of implementing a plan or programme before a decision is made to adopt that plan or programme.”* (Department of the Environment, Community and Local Government, 2004).
- 2.2 The SEA process is comprised of the following steps:
- Screening: Decision on whether or not SEA of a Plan or Programme is required. This is the current state of the SEA process to which this report relates. The preliminary stage to Screening is to determine if the SEA Directive applies to the Plan.
- 2.3 If the SEA is considered to be required following Screening, the following steps are required:
- Scoping: Consultation with the defined statutory bodies on the scope and level of detail to be considered in the assessment;
  - Environmental Assessment: An assessment of the likely significant impacts on the environment as a result of the Plan or Programme;
  - Preparation of an Environmental Report
  - Consultation on the Plan or Programme and associated Environmental Report;
  - Evaluation of the submissions and observations made on the Plan or Programme and Environmental Report; and
  - Issuance of a SEA Statement identifying how environmental considerations and consultation have been integrated into the Final Plan or Programme.



**Figure 2.1: Screening in the overall SEA Process (Source: EPC, Good Practice Guidance on Screening, 2021).**

- 2.4 SEA is intended to provide the framework for influencing decision-making at an earlier stage when plans and programmes – which give rise to individual projects – are being developed. SEA should result in more sustainable development through the systematic appraisal of policy options.
- 2.5 This document is an Applicability Assessment, which provides a pre-screening check, known as a Stage 1 Applicability Assessment, allowing for the rapid screening of environmental effects to determine whether or not an SEA is required via a Stage 2 SEA Screening.

## 3. Guidance and Legislation

### Legislative Overview

- 3.1 The SEA Directive – Directive 2001/42/EC on the Assessment of the Effects of Certain Plans and Programmes on the Environment – requires that an environmental assessment is carried out of certain plans and programmes which are likely to have significant effects on the environment.
- 3.2 The objective of the SEA Directive is *“to provide for a high level of protection of the environment and to contribute to the integration of environmental considerations into the preparation and adoption of plans...with a view to promoting sustainable development.”* (Article 1 SEA Directive 2001).
- 3.3 Ireland made the decision to transpose the SEA Directive into Irish Law in 2004 through two separate statutory instruments or regulations, one specifically concerning specific listed town and country/land use plans (S.I. 436/2004) and one concerning all other sectors (S.I. 435/2004). The transposing regulations are as follows:
- European Communities (Environmental Assessment of Certain Plans and Programmes) Regulations (S.I. 435/2004); and
  - Planning and Development (Strategic Environmental Assessment) Regulations (S.I. 436/2004).
- 3.4 Both pieces of legislation were amended in 2011 through the following amendment regulations:
- European Communities (Environmental Assessment of Certain Plans and Programmes) Amendment Regulations (S.I. 200/2011); and
  - Planning and Development (Strategic Environmental Assessment) Amendment Regulations (S.I. 201/2011).
- 3.5 The SEA Directive has also been given effect through other Irish Legislation. An example being, the Planning and Development Act [PDA] 2000, as amended, which includes a specific requirement to carry out and facilitate SEA alongside the preparation of the Regional Spatial and Economic Strategies; and the Water Services Act 2007, as amended, requires that: *“The purpose for which this Act is enacted includes giving effect to so much of the following as relates to water services”* – listing specifically Directive 2001/42/EC (EPA, Good Practice Guidance on Screening, 2021).

### Guidance Documents

- 3.6 A number of national guidance documents on SEA were reviewed in the preparation of this SEA Screening Report including:
- SEA Screening Good Practice Guidance (EPA, 2021)

- Development of Strategic Environmental Assessment (SEA) Methodologies for Plans and Programmes in Ireland (EPA, 2003)
- Implementation of SEA Directive (2001/42/EC): Assessment of the Effects of Certain Plans and Programmes on the Environment – Guidelines for Regional Authorities and Planning Authorities (Department of the Environment, Community and Local Government, 2004)
- Implementation of Directive 2001/42 on the Assessment of the Effects of Certain Plans and Programmes on the Environment (European Commission, ND)
- SEA Resource Manual for Local and Regional Planning Authorities (EPA, 2015)
- Integrating Climate Factors into Strategic Environmental Assessment in Ireland – A Guidance Note (EPA, 2019)
- Synthesis Report on Developing Strategic Environmental Assessment (SEA) Methodologies for Plans and Programmes in Ireland (EPA, 2019)

## 4. Ballyragget Masterplan

### Legislative Background

- 4.1 The Ballyragget Masterplan (hereafter Masterplan) is a non-statutory Plan, commissioned by KCC for the Ballyragget town settlement. The Plan was produced in collaboration with local residents, in addition to professional guidance and input from the design team. The Masterplan was developed through an iterative review and assessment process with the Strategic Projects and Public Realm Team (SPPR).

### Scope and Description of the Plan

- 4.2 The new Plan will guide the development of Ballyragget into the future and will influence and deliver on real change for the Town in order to make it a more attractive destination in which to live, work, visit and do business.
- 4.3 The Ballyragget Masterplan sets out a high-level, sustainable vision for future development in Ballyragget, in line with national, regional and local planning policy. It is informed by planning policies and quantitative data, but also local community engagement. Through the stakeholder workshop events in Ballyragget, local community had the opportunity to directly shape their town's masterplan document.
- 4.4 The masterplan is designed to positively addresses key issues and challenges in Ballyragget and sets a new benchmark for public realm and town centre design, transforming Ballyragget into an inviting and sustainable settlement, and enabling it to realise its full potential.
- 4.5 The Masterplan outlines placemaking ideas but also demonstrates funding streams that will support the delivery of the key masterplan interventions. The Masterplan document is the first specific planning and development document for Ballyragget and that provides an in-depth planning, environmental, socio-economic and cultural analysis of the town.
- 4.6 Ballyragget is set within a rural context within the north of County Kilkenny and enjoys easy access to Kilkenny City and other towns across north Kilkenny and County Laois. The town's proximity to the N77, R694/R432 roads, enable easy access to the M7 and M9 motorways, facilitating vehicular access to Dublin, Waterford, Cork and Limerick cities, and other key towns across Leinster and Munster. By virtue of its location proximate to various national and regional access roads, the town has the potential to fulfil a more significant role and it is envisaged that this Masterplan will guide development and re-imagine Ballyragget so that it can realise its full potential as a place to live, work and play.

### Overview of the Plan

- 4.7 The aim of this Masterplan is to ensure that Ballyragget has the right objectives and projects in place to become a better place to live, work and do business, to ensure the vitality and vibrancy of the town into the future.



4.8 The objective is to increase the resilience of the local community and economy and provide an enhanced, accessible, inclusive, child-friendly, and healthy urban environment. Towns are continually evolving and need to be resilient, and Ballyragget, with its rich history and natural environment assets, can be reimagined to provide a more connected, vibrant, and dynamic place to live, work and visit.

4.9 Taking into account the Town Centre First policy objectives, our baseline analysis of the town and the feedback received from the local community, the Masterplan has established a set of principles to guide the ideas, actions, and strategies. These are:

1. **Streets and Public Spaces** – Rebalancing the streets of Ballyragget with upgraded public realm to coincide with the works already carried out to The Square, to create an attractive environment.
2. **Movement** – Improved connectivity between the town and its surrounds, using connectivity as fundamental to the social and economic success of the town.
3. **Heritage and identity** – Celebrate the culture and heritage of Ballyragget, defining its image and making it a destination town for visitors.
4. **Built Form and Use** – Reuse of existing vacant / derelict buildings to provide new community facilities and /or tourism offerings.
5. **Vitality and Vibrancy** – Ensure the town of Ballyragget is an economically viable community with the capacity to generate income and employment necessary to maintain or improve the town.
6. **Sustainability and Climate Resilience** – Resilient towns promote sustainable development, well-being and inclusive growth.

The interventions toolkit has been arranged to align with the 6 no. placemaking themes (guiding principles), under which there are a broad range of intervention opportunities.

4.10 Within the following section are a series of ideas to reinforce these placemaking pillars, with a focus on physical enhancements to the public realm alongside opportunities for events, activation, and branding. The interventions are individual actions within the Masterplan. Each proposal is recognised as playing a unique and important role in fulfilling the town’s Masterplan principles:

**Table 4.1: Ballyragget Masterplan Interventions**

Placemaking Theme	ID	Project	Description
Streets and Public Spaces	1	Public Realm Enhancement	Preparation of a comprehensive public realm enhancement scheme in order to provide an attractive Town Centre, and complement existing public realm.

			The scheme will include new, level pavements which will support active travel choices and will serve the community as a whole.
	2	Town Loop Walk	02 Town Loop Walk. A new Town Loop Walk potentially providing dedicated public space connecting key assets, including the Community Hall. It could include a pavilion (potentially toilets, showers, bike hire, fishing equipment hire and other water-based sporting equipment to support active tourism) and natural play equipment and skate park. Key features could include: (a) A new park with supporting facilities; (b) A new car park providing parking to the town centre and a place of rest for passing HGV traffic, supporting local businesses; (c) A Town Loop Walk with dedicated cycle and pedestrian lanes, with crossing points throughout the loop and town centre; (d) Heritage trails, highlighting the history of the town through designs for the public realm and ensuring good wayfinding throughout; (e) Enhanced connectivity within the town and active travel routes to key locations; and (f) Support for the health and well-being of residents and visitors.
	3	Fair Green	An existing rectangular area of public open space to the north of the Square, with a children's playground. There is potential to make this public space a focal point, by making it more attractive to residents' and visitors.
Movement	4	New Town Car Park	Provision of a new town car park located c.0.5Km from the Square that will support active travel choices to and around the town centre. This car park will also provide access to the new River Park

	5	Reduce Level of On-Streetcar Parking	There is a high level of on-street parking throughout the town. It is proposed that some of these spaces are removed to facilitate new 'greened' areas, which would comprise raised planters with benches / seated areas, to create more space for residents and visitors to meet or provide areas for existing businesses to spill out onto the street.
	6	Pedestrian and Cycle Network	The town presently has no cycle or pedestrian network. The new River Park will provide connectivity to and within the town, providing active travel options.
	7	Traffic Calming	There is a lack of pedestrian crossing points at congested areas including along the N77 at SuperValu. The town also has high levels of HGV traffic.
	8	Wayfinding	Introduce new branded signage for the town, including entrance signs to the western and southern approaches to create a sense of arrival. Introduce interpretative signage at new River Park for the historic trails. Explore introduction of heritage plaques to help identify Protected Structures within the Town.
Heritage and Identity	9	Façade Improvements	Vacancy, dereliction and the consequential appearance of buildings has been highlighted as an issue within the town centre and secondary streets. The town is characterised by the two 'formal squares'. Therefore, the quality and appearance of buildings is important to ensure they contribute positively to the historic streetscapes.
	10	Town Gateway	The western and southern approaches to the town should be prioritised as a short-term intervention in order to create an attractive, welcoming gateway to the town, through a combination of signage, landscaping and artwork capturing the town's history (e.g., the Tower Castle). Through these mechanisms existing arrangements could be significantly improved.

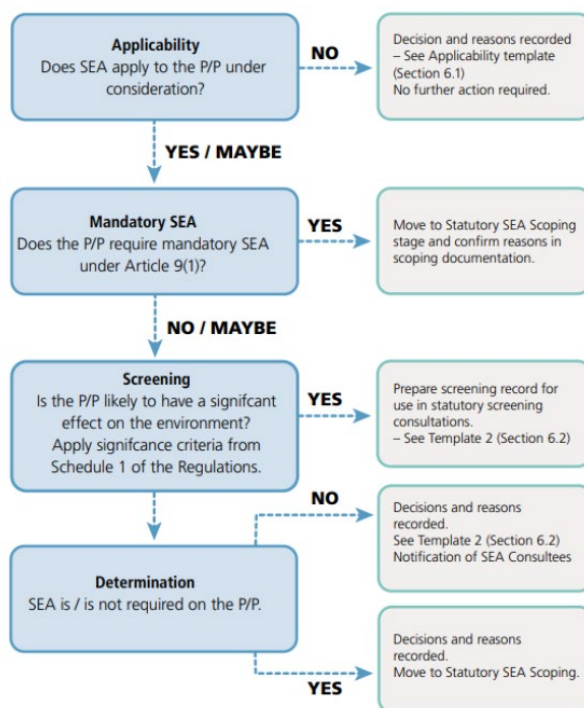
Built Form and Land Use	11	Butler House	Butler House dates to c.1750 and is one of Ballyragget's heritage assets. The building is vacant / derelict, and its central location on the Square would make it an ideal building for a community hub / remote working hub with the potential to include gym facilities and / or café. There is a courtyard to the rear of the property which would be suitable for car and bicycle parking.
	12	Community Centre / Hall	The community hall is located on the N77 beside the Square. Apart from outdoor activities held at the GAA Club, most of them occur in the hall. Based on the existing use of the hall combined with the desire to expand activities for younger people, there is a need to refurbish the existing building.
	13	Heather Court Hotel	Despite its central location on the Square, this property and site is unoccupied. Therefore, it is a key opportunity site within the town. A feasibility study should be carried out to explore the potential for a hotel or hostel accommodation, which would support the active tourism initiatives proposed for the town and would contribute to the existing active street frontages.
Vibrancy	14	Programme to tackle vacancy and dereliction	Vacancy and dereliction are a key priority within the National Town Centre First Policy Framework. Feedback from the local community revealed that this is an issue for those who live and work in the town.
	15	Cycling and Walking Activities	The town presently has no cycle or walking routes, with this issue being seen as the second priority area for improvement within the town by the local community. A new walking / cycle loop linked with the new River Park would fulfil the community aspirations and contribute to their well-being. A wider greenway route could also be explored along the Old Railway Line, linking the town further afield, bolstering its active tourism offer.

	16	Heritage	There is an opportunity to capitalise on the town's rich history through implementation of heritage trails in conjunction with the cycle / pedestrian routes and linear parks.
	17	Events	Historically, the Square was used for markets and 'The Fair'. Therefore, there is potential to recreate these events along with a wider event programme for the town. The Covid-19 Pandemic illustrated the value and importance of events to bring local communities together, and Ballyragget has a strong community spirit.
Sustainability and Resilience	18	Groups and organisations	Several groups who participated in the masterplan workshops identified the need for more community hubs and amenities. Through this masterplan, Kilkenny County Council seeks to support and facilitate groups and organisations that already exist within the local area and aim to add to these by creating a more inclusive community, contributing to residents' health and well-being.
	19	Landscaping	Additional landscape measures throughout the town will not only contribute to the biodiversity of the town, but will enhance the overall appearance, making it an attractive destination town.
	20	EV Charging	EV charging should be provided within the town and in any new development. EV charging points should be located centrally within the Square, with additional charging points proposed within the new Town Car Park to service the wider community and visitors and at other locations if demand presents itself.

## 5. SEA Screening Methodology

### SEA Screening Methodology

- 5.1 The procedure follows the SEA Decision Tree adapted from research report Development of Strategic Environmental Assessment (SEA) Methodologies for Plans and Programmes (P/P) in Ireland (Scott and Marsden, 2000), the adaptation of such is shown in Figure 5.1 below.
- 5.2 According to the EPA guidance, the screening process comprises three principal stages:
- 1. Applicability
  - 2. Screening
  - 3. Determination
- 5.3 EPA guidance for the Screening process is outlined in **Figure 5.1**



**Figure 5.1: SEA Screening Process under S.I. 435/2004, as amended. Source: EPA Good Practice Guidance on Screening, 2021.**

- 5.4 The guidance states that the overall characteristics of the plan or programme should first be considered, by means of Stage 1 'Applicability' check to see if it falls within the requirements of the SEA Directive.
- 5.5 Should this stage 1 Applicability check determine that the plan or programme is of a type that falls within the requirements of the SEA Directive, the potential

environmental significance of implementing the proposed plan or programme should then be considered, against the significance criteria outlined in Annex II (2) of the SEA Directive (Stage 2 'Screening').

5.6 Regard was also had to the SEA Decision Tree adapted from the research report Development of Strategic Environmental Assessment (SEA) Methodologies for Plans and Programmes in Ireland (Scott and Marsden, 2001).

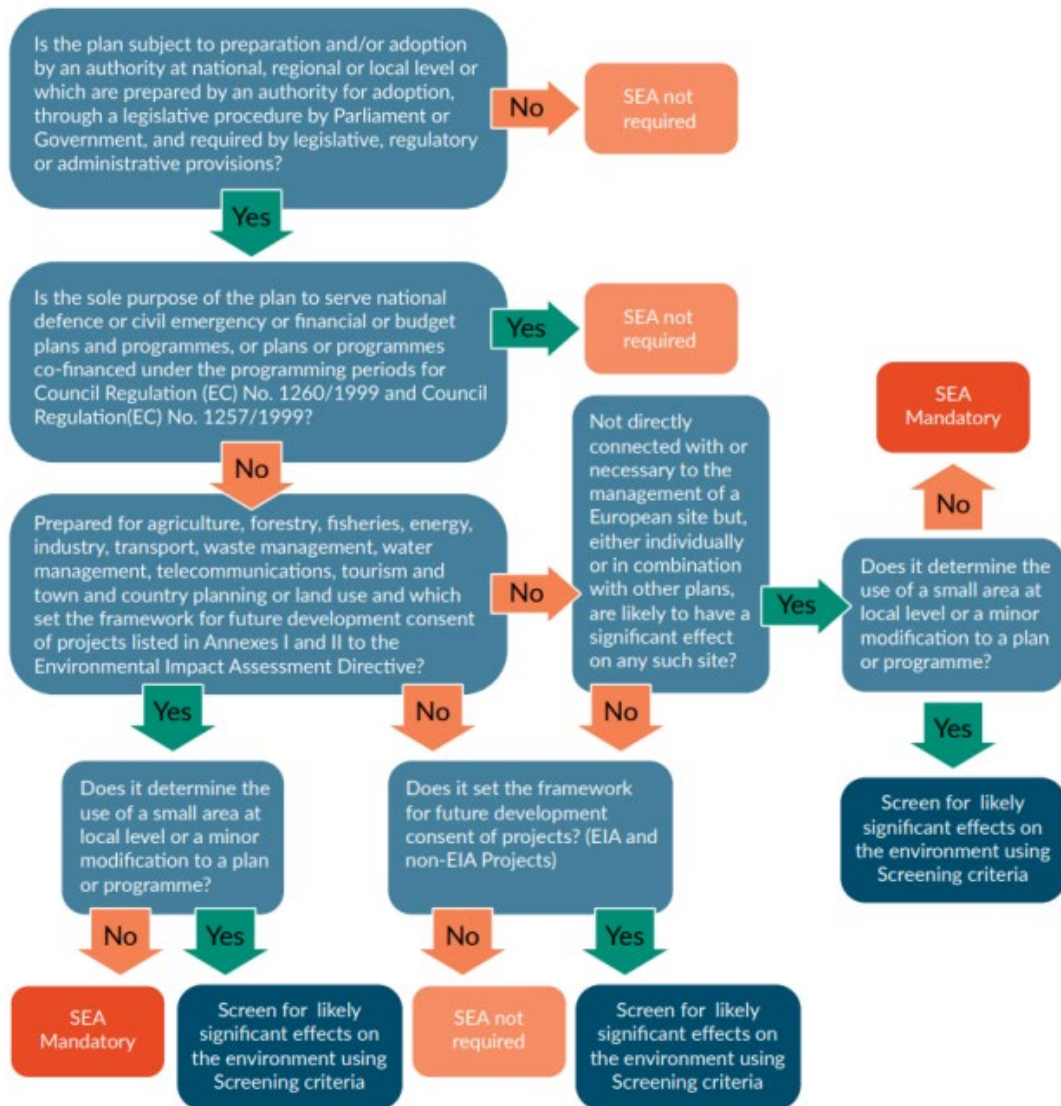


Figure 5.2: SEA Decision Tree adapted from the research report Development of Strategic Environmental Assessment (SEA) Methodologies for Plans and Programmes in Ireland (Scott and Marsden, 2001).

### Stage 1 'Applicability'

5.7 The Applicability Stage of Screening consists of a four-step process. As outlined in Table 5.1 below:

**Table 5.1: Stage 1 ‘Applicability’ Steps Source: (EPA, Good Practice Guide on Screening, 2001)**

Step 1:	<p>Establish the status of the plan or programme-making body.</p> <p>Is the P/P prepared and/or adopted by an authority at national, regional or local level or prepared by an authority for adoption through a legislative procedure by Parliament or Government?</p>
Step 2:	<p>Establish the nature of the plan or programme.</p> <p>Is the P/P required by legislative, regulatory, or administrative provisions?</p>
Step 3:	<p>Check the plan or programme is not exempt.</p> <p>Is the sole purpose of the P/P for national defence, civil emergency or finance / budget?</p>
Step 4:	<p>Check if the plan or programme requires mandatory SEA.</p> <p>Is the P/P prepared for agricultural, forestry, fisheries, energy, industry, transport, waste management, water management, telecoms, tourism, town and country planning or land use 13 and does the P/P set the framework for future development consent of projects listed in the Annexes of the EIA Directive;</p> <p>Or;</p> <p>Will the P/P require assessment under Article 6 or 7 of the EU Habitats Directive?</p>

5.8 There are three possible outcomes following Stage 1 Applicability Screening:

- **The SEA Directive does not apply:** The P/P is not of a type which falls within the remit of the SEA Directive / SEA Regulations. It is recommended as good practice to keep a note of the deliberations alongside the P/P on the relevant website, alongside the AA screening determination. There is no requirement to notify the environmental authorities.
- **The SEA Directive does apply:** The P/P is of a type which falls within the remit of the SEA Directive / SEA Regulations and requires mandatory SEA. Proceed to SEA Scoping and statutory consultation with the designated environmental authorities. The Screening outcome should be confirmed within the SEA Scoping Report.
- **The SEA Directive may apply:** The P/P may be within the remit of the SEA Directive as either it relates to use of a small area at local level or minor modifications to a relevant P/P, it is a P/P which may set the framework for



future development consent even though not listed as a P/P type, or there is uncertainty in relation to any of the provisions considered at the Applicability Stage, and so a case-by-case determination will be required. Proceed to Stage 2 Screening.

- 5.9 An Applicability Screening template ('Template 1') is provided in the EPA guidance document and is utilised in Section 6.1 of this SEA Screening Report.

### Stage 2 Screening

- 5.10 Stage 2 consists of determining, on a case-by-case basis, if SEA is required for a Plan or Programme which has characteristics that may give rise to significant effects or for which there is uncertainty on key characteristics. Although an SEA Screening Report is not a mandatory requirement in the legislation it has become embedded good practice and is the recommended approach in this guidance note.
- 5.11 The Screening Stage consists of a four-step process, outlined in Table 5.2, as set out in the EPA's Good Practice Guide on SEA Screening Report.

**Table 5.2: Summarised Stage 2 'Screening' Steps Source: (EPA, Good Practice Guidance on Screening, 2021)**

Step 5:	Describe the characteristics of the P/P and the receiving environment including any environmental problems.
Step 6:	Identify the potential for significant environmental effects.
Step 7:	Statutory consultation with Designated Environmental Authorities.
Step 8:	Draft Determination.

- 5.12 Stage 2 of the SEA Screening methodology consists of an environmental significance screening, which may be undertaken to assess whether a plan or programme, which has not been screened out by the 'Applicability Stage', is likely to result in significant environmental effects and should therefore, be taken forward for SEA.
- 5.13 An SEA Screening template ('Template 2') is provided in the EPA guidance document and is utilised in Section 6.1 of this SEA Screening Report.
- 5.14 Annex II of the SEA Directive sets out the "statutory" criteria that should be addressed when undertaking the 'Screening Stage'. Annex II of the SEA Directive is transposed into national legislation as Schedule 1 'Criteria for determining whether a Plan or Programme (or Modification thereto) is likely to have significant effects on the Environment' of the European Communities (Environmental Assessment of Certain Plans and Programmes) Regulations 2004, as amended.
- 5.15 The 'Significance Criteria' and sub-criteria are outlined below.

*“4. The characteristics of the plan or programme, or modification to a plan or programme, having regard, in particular to:*

- The degree to which the plan or programme, or modification to a plan or programme, sets a framework for projects and other activities, either with regard to the location, nature, size and operating conditions or by allocating resources;*
- The degree to which the plan or programme, or modification to a plan or programme, influences other plans including those in a hierarchy;*
- The relevance of the plan or programme, or modification to a plan or programme, for the integration of environmental considerations in particular with a view to promoting sustainable development;*
- Environmental problems relevant to the plan or programme, or modification to a plan or programme;*
- The relevance of the plan or programme, or modification to a plan or programme, for the implementation of European Union legislation on the environment (e.g. plans and programmes linked to waste management or water protection).*

*5. Characteristics of the effects and of the area likely to be affected, having regard, in particular to:*

- The probability, duration, frequency, and reversibility of the effects;*
- The cumulative nature of the effects;*
- The transboundary nature of the effects;*
- The risks to human health or the environment (e.g. due to accidents);*
- The magnitude and spatial extent of the effects (geographical area and size of the population likely to be affected);*
- The value and vulnerability of the area likely to be affected due to:*
  - special natural characteristics or cultural heritage*
  - exceeded environmental quality standards or limit values;*
  - intensive land-use.*

*The effects on areas or landscapes which have a recognised national, European Union or international protection status.”*

### **Stage 3 ‘Determination’**

- 5.16 As soon as practicable after making the final determination as to whether SEA is required or not, the plan maker should make a copy of the decision, including, as

appropriate, for reasons for requiring or not requiring an environmental assessment, available for public inspection at the P/P offices and on the website.

- 5.17 The P/P maker should also send a copy of the final determination to the relevant SEA environmental authorities notified during screening. This determination should stay linked to the P/P or modification on the website to ensure transparency and provide important information on decision making during the lifetime of the P/P or if any modifications are made.

## 6. SEA Screening

### Stage 1 – SEA ‘Applicability’

- 6.1 As outlined in Section 5.2, Stage 1 ‘Applicability’ of the SEA Screening methodology constitutes the use of Template 1, based upon the relevant Applicability steps. Template 1 is reproduced as Table 6.1.

**Table 6.1: Table 6.1 Template 1 Stage 1 ‘Applicability’ of SEA Screening. Source: (EPA, Good Practice Guidance on Screening, 2021).**

	General Details	
	Type and Title of P/P:	Ballyragget Masterplan
	Name of P/P Maker:	Kilkenny County Council
	Date:	2024
Step 1 of the Applicability Screening	Status of the P/P maker	
	Is the P/P prepared and/or adopted by an authority at national, regional or local level or prepared by an authority for adoption through a legislative procedure by Parliament or Government?	Yes. KCC is the authority responsible for local government in Co. Kilkenny, Ireland. As a county council, it is governed by the Local Government Act 2001. A competent authority for the purpose of SEA is defined under S.I. No. 435 of 2004 as “the authority which is, or the authorities which are jointly, responsible for the preparation of a plan or programme, or modification to a plan or programme”. As such, the Plan can be considered a document prepared by ‘an authority’ at a local level.
	Is the P/P required by legislative, regulatory or administrative provisions?	No. As outlined in Section 1 (Introduction), the plan has been prepared to guide the development of Ballyragget into the future and to influence and deliver change for the town to make it a more attractive destination in which to live, work, visit and do business. The Plan is not a statutory document and therefore, it is not required under legislative, regulatory or administrative provisions. As such a SEA is not required and no further steps are required.

## Outcome of Stage 1 Applicability

- 6.2 Following the Stage 1 Applicability Screening outcome and the SEA Decision Tree as adapted from the research report Development of Strategic Environmental Assessment (SEA) Methodologies or Plans and Programmes in Ireland Source (Scott and Marsden, 2001) which was shown in Figure 5.1 above. **It has been determined that the SEA Directive does not apply to the Plan as shown in Figure 6.1.** Therefore, the Plan will not be taken to stage 2 Screening to determine whether SEA is necessary.



**Figure 6.1:** Outcome of Stage 1 Applicability Screening, as adapted from the research report Development of Strategic Environmental Assessment (SEA) Methodologies for Plans and Programmes in Ireland. Source (Scott and Marsden, 2001).

## 7. Conclusion

- 7.1 As outlined in Section 6, it has been determined that the SEA Directive does not apply to the Plan. The Plan is a type of Plan / Programme which does not fall within the remit of the SEA Directive/ SEA Regulations.
- 7.2 SEA is intended to provide the framework for influencing decision-making at an earlier stage when plans and programmes – which give rise to individual projects – are being developed. SEA should result in more sustainable development through the systematic appraisal of policy options. This SEA Applicability Report provides the findings of this process for the Plan, which provides a pre-screening check, known as a Stage 1 Applicability Assessment, allowing for the rapid screening of environmental effects that do not require a SEA to determine whether an EIA is required via Stage 2 Screening.
- 7.3 This SEA Applicability Report assesses the Ballyragget Masterplan's 20 no. proposed interventions including the Town Loop Walk (see Intervention 2), the upgrade of the existing Fair Green (see Intervention 3), and the creation of a new town car-park (see Intervention 4), as well as smaller-scale interventions such as Wayfinding (see Intervention 8) and Town Gateways (see Intervention 10). It is noted that the Masterplan does not exempt any of the 20 no. interventions and related development from the formal planning application or Part 8 determination process. As required, they will be subject to their own planning permission process, including the assessment of environmental impact.
- 7.4 While the Plan is prepared by a local authority, the Plan is a non-statutory plan and it is also not required by legislative, regulatory, or administrative provisions.
- 7.5 As outlined above, on the basis of this SEA Applicability Assessment it has been determined that the SEA Directive does not apply, there is no requirement to inform the Ballyragget Masterplan.

## Appendix 1: References

Department of the Environment, Community and Local Government (2004). Implementation of SEA Directive (2001/42/EC): Assessment of the Effects of Certain Plans and Programmes on the Environment- Guidelines for Regional Authorities and Planning Authorities DECLG.

EPA. (2003). Synthesis Report on Developing A Strategic Environmental Assessment (SEA) Methodologies for Plans and Programmes In Ireland. EPA.

EPA. (2013). Development of Strategic Environmental Assessment (SEA) Methodologies for Plans and Programmes in Ireland . EPA.

EPA. (2013). SEA Resource Manual for Local and Regional Planning Authorities . EPA.

EPA (2019) Integrating Climatic Factors into Strategic Environmental Assessment in Ireland - A Guidance Note. EPA

EPA. (2021). Good Practice Guidance on Screening. Environmental Protection Agency, Ireland.

European Commission (2001), Implementation of Directive 2001/42 on the Assessment of the Effects of Certain Plans and Programmes on the Environment. European Commission.

Scott, P. M. (2001). Development of Strategic Environmental Assessment (SEA) Methodologies for Plans and Programmes in Ireland. EPA.

Turley

4 Pembroke Street Upper,  
Dublin 2  
D02

T (01) 517 5856